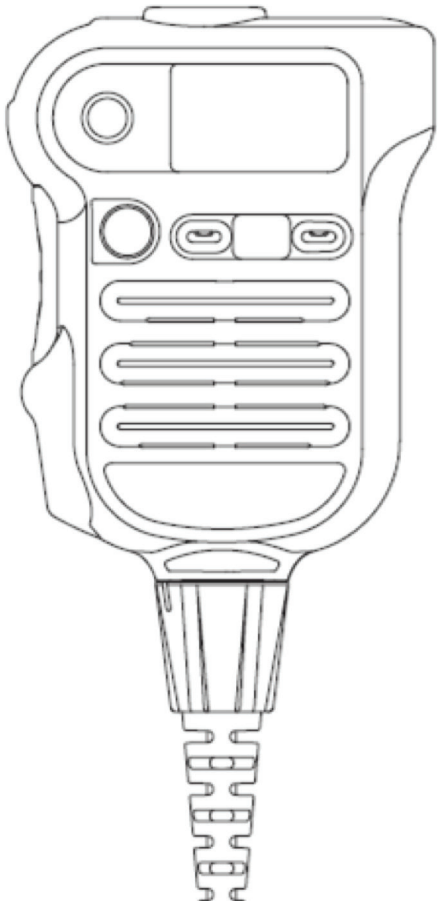
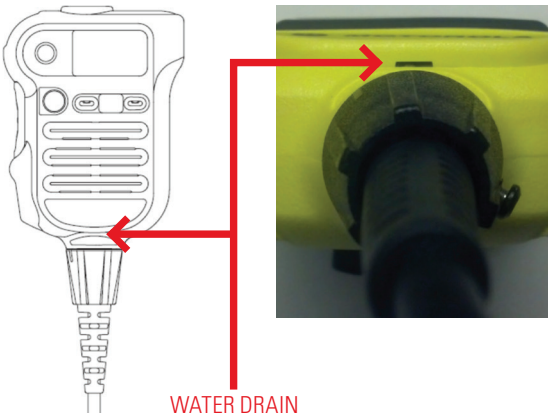


BEST PRACTICES FOR XE RSM



FOR THE BEST PERFORMANCE IN EXTREME ENVIRONMENTS, ALWAYS FOLLOW 3 SIMPLE RULES.

1. ALWAYS WEAR ORANGE BUTTON UP FOR BEST WATER DRAINAGE



YES



YES

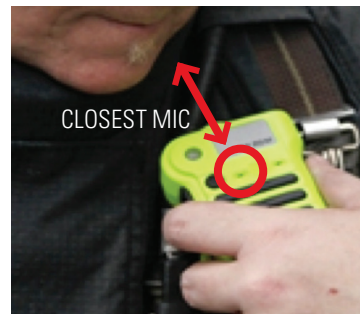
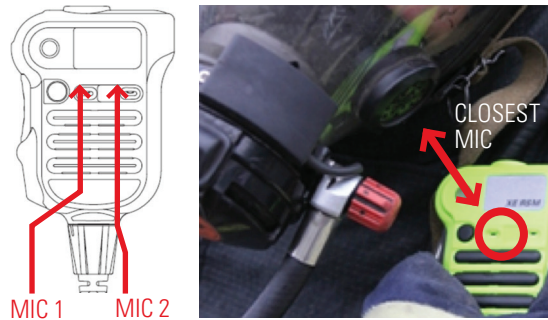


YES



NO

2. ALWAYS TALK TO CLOSEST MIC FOR BEST VOICE QUALITY



3. ALWAYS SHAKE TO CLEAR WATER AND THEN TALK

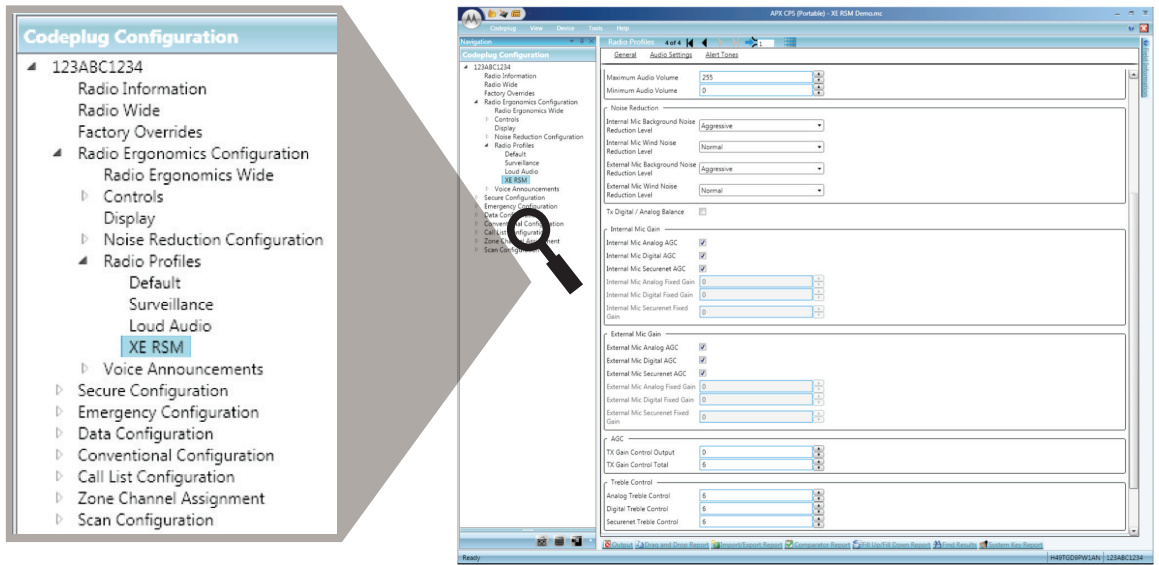


Two or three brisk
vertical shakes
will cause water to
drain faster.

RADIO PROFILE CONFIGURATION ENHANCEMENT

Improve communication intelligibility with three APX Radio Profile Audio Setting CPS (Customer Programming Software) changes.

Please note that the "XE RSM" is NOT a standard shipping Radio Profile and needs to be manually created.



1. Enable TRANSMIT External Mic AGC to optimize XE RSM microphone signal level.

AGC	
TX Gain Control Output	0
TX Gain Control Total	6

Set 'TX Gain Control Output' to 0, 'TX Gain Control Total' to 6.

2. Boost RECEIVE Treble Frequency to add crispness to speaker signal for better intelligibility.

Treble Control	
Analog Treble Control	6
Digital Treble Control	6
Securenet Treble Control	6

Set 'Treble Control' to 6

3. Adjust TRANSMIT Noise Reduction for use when the XE RSM is not attached to the radio.

Noise Reduction	
Internal Mic Background Noise Reduction Level	Aggressive
Internal Mic Wind Noise Reduction Level	Normal
External Mic Background Noise Reduction Level	Aggressive
External Mic Wind Noise Reduction Level	Normal

Set Internal and External 'Mic Background Noise reduction Level' to 'Aggressive'.

Please note all External Mic Noise Reduction is DISABLED in the radio when the XE RSM is attached.

Motorola Solutions, Inc.
1301 East Algonquin Road, Schaumburg, Illinois 60196, U.S.A.
800-367-2346
motorolasolutions.com

MOTOROLA, MOTO, MOTOROLA SOLUTIONS and the Stylized M Logo are trademarks or registered trademarks of Motorola Trademark Holdings, LLC and are used under license. All other trademarks are the property of their respective owners. © 2014 Motorola Solutions, Inc. All rights reserved.