

text@trboPlus™: Connect Plus data gateway

Email gateway and GPS export middleware

Use your 2-way radios to communicate via email

text@trboPlus™ is a middleware software application that interfaces over IP to Motorola MOTOTRBO™'s Connect Plus XRC 9000 controllers:

- Built-in Presence Notification engine
- Email gateway supports major hospitality applications
- GPS export functionality supporting external application such as TABLETmedia's webtracker@trbo

Reliable, simple to configure, light on the systems and affordable!

text@trboPlus was designed as a true middleware component. As such it is very easy to deploy, effective and more importantly affordable.

- Can be deployed in minutes
- Choose whether to monitor all subscribers, a validated range, or a fully-customizable range
- Message are stored locally and forwarded with multiple retries if the radio is unavailable
- Bounce back email notification for unreachable or unknown radios
- For incoming emails it acts either as a SMTP server or a POP3 client
- Outbound emails are delivered as a SMTP client or directly to the final destination via DNS resolution
- [Web services interface to HotSOS: it directly connects to M-Tech servers bypassing email](#)
- Selectable full GPS reports or limited to reduce the amount of OTA throughput
- Export GPS raw data to Versatrans, Transloc, CES Wireless and others upon request.
- Runs as a Windows Service
- Customizable export to different systems

Selected Features

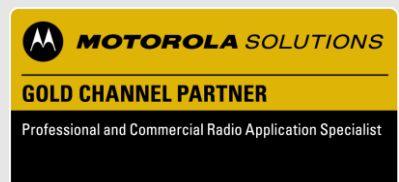
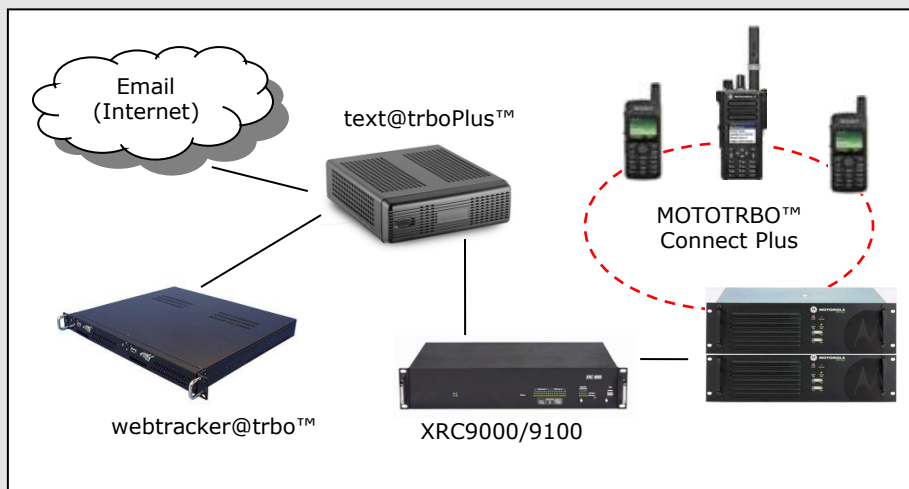
- Compatible with hospitality applications
- Uses standard SMTP/POP3 protocols
- Supports SSL/STARTTLS authentication
- Message logging
- Supports message queuing with programmable retries
- Message delivery failure notifications
- Automatically starts with Windows
- Rapid deployment
- Direct interface to Motorola XRC9000
- Small footprint, low CPU usage

Typical Customers:

- Private networks
- Carriers and operators

Typical Applications:

- Hospitality
- Education
- Transportation
- Manufacturing
- Utilities



text@trboPlus™ – MOTOTRBO™ Connect Plus middleware

Features

- Private messages to individual radios
- Group messages to multiple radios
- SMTP client or direct DNS resolution for outbound email
- Built-in POP3 client and SMTP server for incoming email
- Supports email servers that require SSL or STARTTLS authentication
- Test email servers configuration
- Message delivery retries with programmable number of times and interval
- Automatic bounce back emails to unknown or unreachable radios
- White list of email addresses and dispatch IDs
- Unlimited message storage
- GPS reporting: full: time of sample, lat, long, accuracy, speed, altitude, direction;
Limited: time sample arrived, latitude, longitude, accuracy
- Runs as a Windows Service
- Thin client with light CPU utilization
- Runs on any MS Windows 7 desktop and Server 2008 version and greater

Easy to deploy

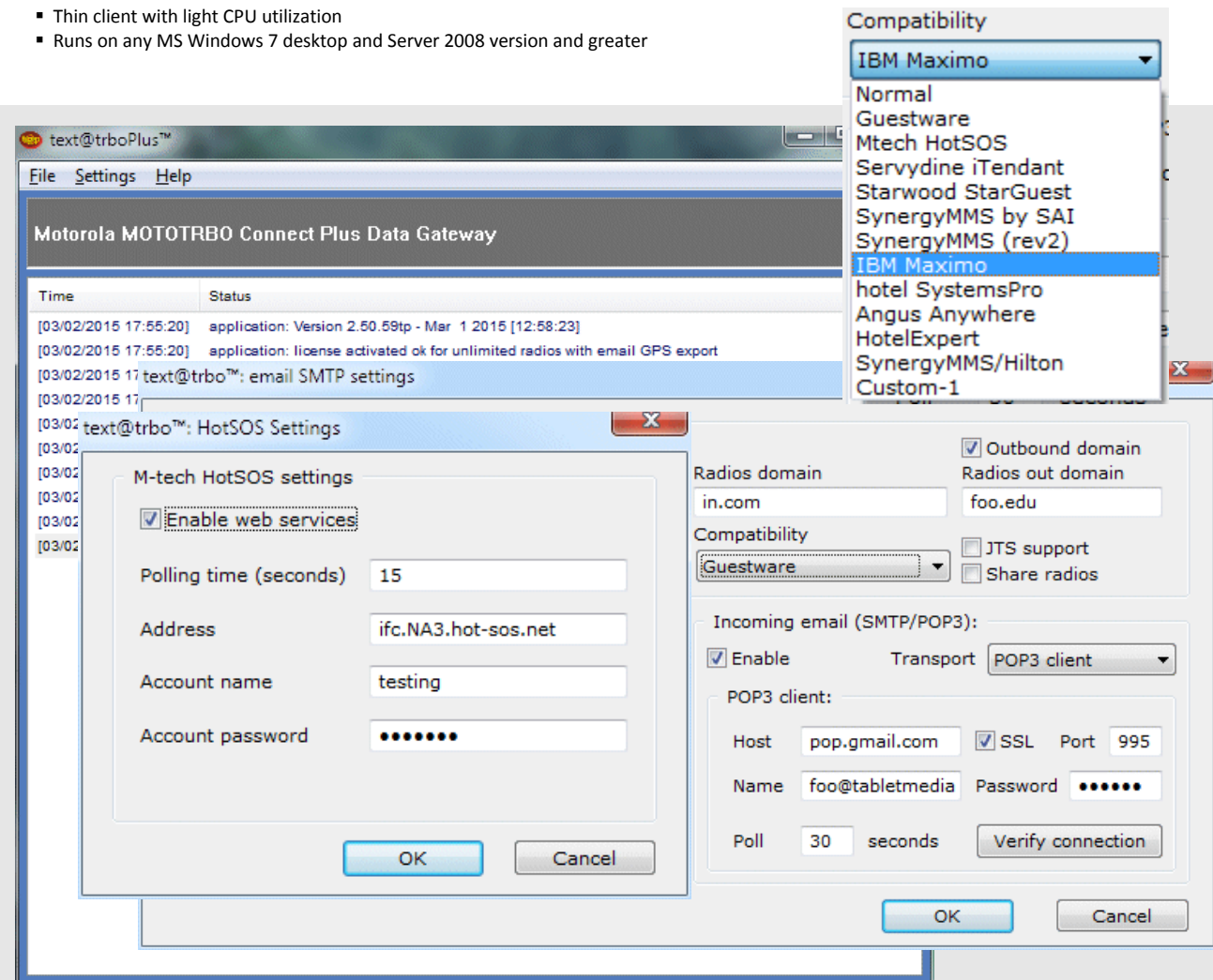
- Software only solution
- Connections: 100% TCP/IP to XRC9000 and AVL
- Runs on Virtual Machines

Configurations:

- Normal: email only
- Full: email and GPS export

Professional Services:

- Customizations available for special requirements



TABLETmedia, Inc.
3035 Scott Street
San Francisco, CA 94123
Tel: +1 (415) 567-8100

<http://www.tabletmedia.com> - 3/15
Copyright © 2001-2015 TABLETmedia, Inc. – All rights reserved.
TABLETmedia webtracker@trbo™, eztracker@trbo™, phone@trbo™,
text@trbo™, iTalkie™ and iFon™ are trademarks of TABLETmedia, Inc.
All other trademarks belong to their respective companies.