

iTalkie™: the scalable dispatch solution

Modular MOTOTRBO™ interoperability and multi-function

Seamlessly dispatch voice calls and text messages to 2-ways radios, handhelds and PCs. Track their location or use them as pagers to receive SCADA notifications.

- Users of radios and computers can finally communicate between each other
- Employees can use their PCs to talk and send messages to others on their radios and handhelds

iTalkie™ is a very flexible solution that can easily meet most customers' different requirement. Whether you need to dispatch voice and text to radios and mobile computers, run work order management applications or simply send text alerts to radios, cellphones via SMS and handhelds, iTalkie™ is your Swiss-army knife.

The solution grows as needed: it can start as a simple call logger for a small radio network or to enable PTT over WiFi on rugged mobile computers, and grow to control several control station with thousands of radios, PDAs, PCs and dispatchers in multiple sites.

Instant converged PTT, VoIP, text, telephone, email and SCADA!

iTalkie™ answers the demand of customers that require a quality text, voice and location solution which is easily deployable, maintainable and cost effective. It is a serverless software solution for push-to-talk with presence-driven phone-like calling, text and more. It easily expands and scales by "dropping" components in the network without the need to reprogram the devices.

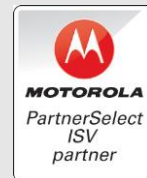
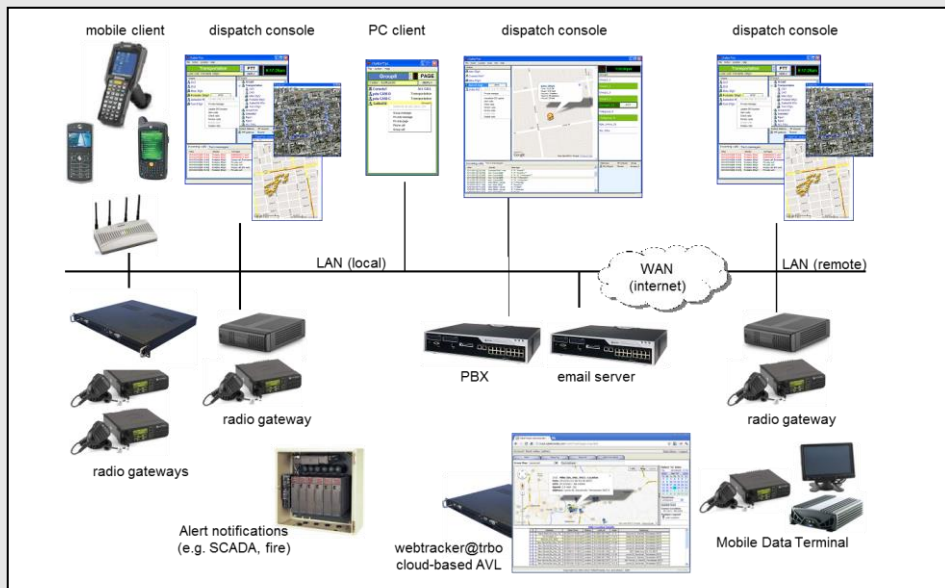
It also reduces TCO: since all of its software applications are optimized to require minimal storage and processing power, they can be deployed on existing systems to eliminate capital equipment expenditures.

Selected Features

- Half-duplex calls between radios, handhelds and PCs
- GPS location via OpenStreetMaps / Google Earth and export to other AVL solutions
- Cross patch / cross-mute / mixer
- Bridge bands and analog/digital radios
- Text messages between email, radios, mobile computers and PCs
- Phone interconnect to radios
- Email gateway
- SCADA plugins compatible with paging and other RS-232 applications
- Configurable text routing
- Record all voice, text and GPS traffic
- Unlimited number of radios, clients, dispatchers and control stations
- Rapid deployment
- Direct interface to MOTOTRBO™ digital or analog radios

Typical Applications:

- Warehousing / Manufacturing
- Retail
- Hospitality
- Education
- Public utilities
- Chemical plants
- Rural public safety
- Government



iTalkie™ solution – multi-modal fixed and mobile distributed dispatch

iTalkie™/DS: dispatch console

- 1:M and 1:1 half-duplex voice and text, 1:1 full duplex intercom
- Display radio locations using OpenStreetMaps and Google Earth
- Very intuitive point and click to call user interface
- Make and receive telephone calls and patch them to radios
- Last call replay, all system call and text, select, cross-mute, mixer
- Interactive call and messages history for fast reply and forward
- Remote radio monitor, check, inhibit, alert, dekey
- Emergency display, zoom with flashing icon, email alert
- HD quality low latency voice with background noise canceling

iTalkie™/RG: advanced radio gateway

- Voice and data bridge between IP and radio networks with cross-patching
- Advanced telephone interconnect
- Text messages with programmable routing and distribution lists
- Email gateway with SMTP and POP3 support
- Customizable SCADA plugins: RS-232 and network interfaces (TAP, COMP2)
- Logging and recording of voice/telephone calls and text messages
- Export raw GPS coordinates to Versatrans, Transloc and other 3rd party solutions
- MOTOTRBO™ digital interface with channel control, LCD display and audio levels

iTalkie™ clients

- 1:1, 1:M half-duplex voice+text, 1:1 full-duplex intercom
- Channel scanning, all call, last call reply and replay
- HD quality voice with background noise canceling
- Cross platform: Windows PCs, Windows Mobile and CE

iTalkie™/MT

- Remote messaging client for touchscreens
- Pre-defined replies

iTalkie™/PA Gateway

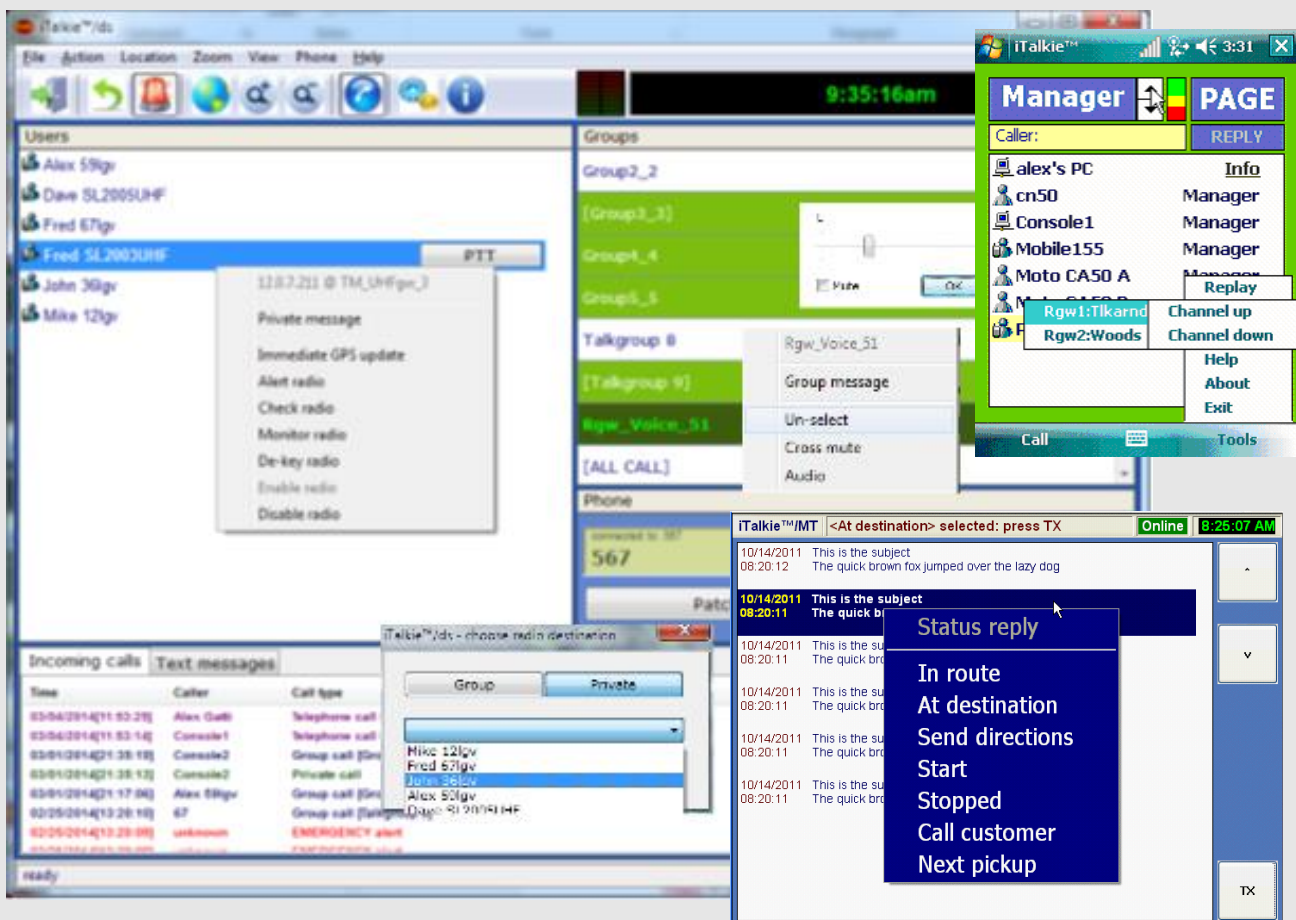
- Make calls through the overhead paging system

Easy to deploy

- Scalable to thousands of users and control stations
- Software only solution, no 3rd party software required!
- Radio connection: USB cable to MOTOTRBO™ radios or inexpensive adapter for analog radios, NAI/data

Professional services:

- Customizations available for special requirements



TABLETmedia, Inc.
3035 Scott Street
San Francisco, CA 94123
Tel: +1 (415) 567-8100

<http://www.tabletmedia.com> - 3/15
Copyright © 2001-2015 TABLETmedia, Inc. – All rights reserved.
TABLETmedia webtracker@trbo™, eztracker@trbo™, phone@trbo™, text@trbo™, iTalkie™ and iFon™ are trademarks of TABLETmedia, Inc.
All other trademarks belong to their respective companies.

TABLETmedia