



FUTURE-PROOF YOUR MOBILE APPLICATIONS

Instant Application Migration to
MC50/MC3000/MC9000/MC1000 Series Computers

MCL MIGRATION WIZARD



symbol[®]
The Enterprise Mobility Company™

EXECUTIVE SUMMARY

Companies utilizing Symbol's PDT6800 or PDT3000 Series mobile computing devices are faced with several challenges. The aging devices do not offer the computing power, memory or new functionality available on today's next-generation mobile computing devices — but next-generation devices will not run your current DR-DOS applications. Symbol Technologies and MCL Technologies are offering you the ideal solution — a new MCL-Designer Migration Wizard. When used together, MCL-Designer and the Migration Wizard simplify programming of data collection applications, from design to deployment. It also includes the ability to rapidly and cost-effectively migrate your older MCL-based applications to run on today's newest devices, such as, Symbol's MC9000, MC3000, MC1000 and MC50 mobile computers.

MCL-COLLECTION: POWERFUL TOOLS WITH POWERFUL BENEFITS

MCL-Collection is a modular software suite that reduces the development, integration and deployment time of mobile applications from months to weeks. This powerful set of tools manages the many aspects associated with mobile application development and deployment, including high productivity features such as dialogue boxes, drag-and-drop, cut-and-paste and more; the efficient and rapid exchange of data (to support inventory or sales applications, for example) between host and client device or the accuracy of data exchanged either via Ethernet or wireless connectivity; the integration with ERP software; and advanced features such as voice recognition.

A powerful and flexible development and deployment environment for enterprises throughout the world, MCL-Collection not only reduces development time, but also allows a single application to be easily deployed on multiple operating systems. Companies can realize an immediate benefit from their investment in new mobile computers. Applications developed using MCL-Designer are cross-platform compatible across Symbol's Palm OS®, Windows® Powered Pocket PC, Windows CE, Windows CE.NET and Windows Mobile™-based mobile computers so those applications can run (as is) on any of those devices, regardless of form factor, or can be modified to incorporate the new device's features. Different device form factors can be selected to best meet the needs in the various areas of your operations. And existing MCL-based applications are quickly and easily extended — for example, radio frequency identification (RFID) or voice input could be added to your existing application. As a result, your existing application investment is preserved, and your applications are future-proofed — all with minimal capital expense and a lower total cost of ownership.

A person wearing a white lab coat is holding a rugged mobile device, possibly a PDA or a rugged smartphone. The device has a screen displaying some data and a keypad. The background is a solid yellow color.

next-generation devices

MCL-COLLECTION SOFTWARE SUITE AT-A-GLANCE

The following is a description of the modules in MCL-Collection:



MCL-Designer	Simplifies development of complex horizontal, multimodal and enterprise-ready wired and wireless mobile applications
MCL-Net	Enables real-time, on-demand or batch concurrent exchange of files and/or data records between the host system and devices using Ethernet/Internet (LAN), RF 802.11 (WLAN), GSM/GPRS (WWAN) for concurrent users employing continuously, casually or occasionally connected communication sessions; optimized for large distribution systems deployments yet efficient for small, localized deployments of mobile workers
MCL-Link	Enables batch exchange of files and/or data records, for sequential communications with one device at a time (Point-to-Point) while providing guaranteed data delivery, minimized data communications traffic and remote project update
MCL-Client	Provides a thick client architecture that executes the MCL mobile applications, making the terminal an intelligent independent device allowing for always connected, casually connected or standalone operation
MCL-Bridges	Provides a reliable and easy-to-use interface to SAP® R/3® or ODBC compliant database; layered approach enables MCL-Link or MCL-Net to use multiple bridges at the same time, enabling an MCL device to communicate simultaneously with SAP R/3, and Oracle® or other ODBC compliant databases
MCL-Collection with VoCollect Voice™	Provides mobile worker applications with voice recognition and voice synthesis capabilities to improve worker productivity and data collection accuracy

MCL-DESIGNER

MCL-Designer is a high productivity development environment to create multimodal applications that utilize the latest features of Symbol's mobile computing technology to further increase productivity throughout your enterprise. With MCL-Designer, the need to rewrite your applications to migrate to newer operating systems and devices is eliminated, enabling you to quickly, easily and cost-effectively take advantage of the power of next-generation mobile computing, including:

- The processing power and extensive memory capacity to handle nearly any business application
- Large, crisp color displays that render your applications easier to see and use
- A wide variety of features and functionality to meet the needs of the enterprise, including: bar code scanners, radio frequency identification (RFID), imagers, voice capabilities and high-performance wireless LAN and wireless WAN communications

A powerful, easy-to-use Migration Wizard is available as an add-on to MCL-Designer that enables you to quickly import, convert, upgrade and enhance existing DR-DOS-based MCL applications to run on the latest operating systems. You gain the compatibility you need to upgrade to next-generation Symbol mobile computing devices — MC9000, MC3000, MC1000 and MC50 — and the power to take advantage of the latest productivity-enhancing features and functionality.

In addition, since the application's interface remains the same, there is no transition, training time or loss of associated productivity for your mobile workers — providing a smooth transition to today's newest mobile devices.

MIGRATION WIZARD: SIMPLE MIGRATION — AND CROSS-PLATFORM FUNCTIONALITY

A graphical user interface (GUI) powers this simple-to-use Migration Wizard, enabling you to move quickly and easily through the steps to migrate your existing MCL DOS-based applications to Symbol's next-generation devices (see Figure 3).

MCL-Designer with the Migration Wizard goes beyond simple migration. It allows you to easily enhance your application to take advantage of features on the new mobile computing device — from full utilization of a larger screen and upgrading from monochrome to color (including complete control of font colors) to adding a toolbar with battery status, date and time. In addition, your application can easily be upgraded to take advantage of productivity features and new functionality, such as:

- Keyboard re-mapping to simplify everyday application usage for your mobile workers
- Integration to host applications, ODBC compliant databases, warehouse management systems (WMS), and enterprise resource planning (ERP) systems via MCL-Designer's built-in processes
- Voice recognition (certain MC9000 configurations)
- Radio Frequency Identification (RFID)
- Imaging
- Signature capture
- Bluetooth
- Wireless LAN or wireless WAN communications

Once MCL-Designer's Migrate Wizard is used to forward migrate the MCL DOS-based applications to run on Symbol's MC50/MC3000/MC9000/MC1000 mobile computers, those applications can run as is on the targeted Symbol device or can be quickly and easily enhanced to optimize the device's features and form factor. This cross-platform compatibility not only provides investment protection, but also reduces the total cost of ownership for your applications.

MCL-Designer also allows you to develop a new application for one Symbol device that is cross platform compatible across the range of Symbol Palm OS, Pocket PC, Windows CE, Windows CE .NET or Windows Mobile-based mobile computers (Figure 5) with just a few clicks of the mouse. Ideal for mixed mobile computing environments, these cross-platform compatible applications deliver tremendous cost efficiencies, as well as the freedom to select the best mobile computing device for your various functional areas. For example, the same warehouse applications can be run on a handheld mobile computer, such as the MC9000-G running Windows Mobile 2003, and a vehicle mount mobile computer, such as the VRC7900 Series running Windows CE 3.0 to support your forklift operators.

MCL-Designer and the Migration Wizard allow you to best meet the needs of your mobile enterprise, delivering the power to migrate an existing MCL DOS-based application to take advantage of Symbol's new MC9000, MC3000, MC1000 or MC50 mobile computers; port the migrated application to other Symbol devices; or develop a new application with cross-platform functionality that can run on any Symbol Palm- or Windows-based device — quickly, easily and cost-efficiently.

MCL-DESIGNER WITH THE MIGRATION WIZARD

FEATURES	BENEFITS
High-productivity development environment	Quickly create sophisticated, enterprise-ready, mobile workforce, data capture applications with cross-platform portability
Multimodal applications	Create applications that combine technologies such as bar code scanners, touch screens, keyboards, signature capture, imagers, radio frequency identification, displays, printers, and voice recognition in one application
Migration wizard	Import, convert, upgrade and enhance your DR-DOS MCL applications to run on Symbol MC3000, MC1000, MC50 or MC9000
Graphical User Interface (GUI)	Simplify application development with a GUI, which incorporates high productivity features, such as easy-to-use dialogue boxes, radio buttons, drag-and drop, cut-and-paste, screen viewer, screen copy, screen insert, screen delete and more
Processes	Implement complex application logic quickly with built-in “processes” that facilitate host access, file manipulation, mathematical computations, communications and more
Custom Library	Accelerate development by creating a library of your frequently used MCL objects and screens for re-use in numerous projects and applications
Thick client/server architecture	Create device-resident applications that control and take advantage of all the unique features of each mobile computer Create applications for stand-alone or continuously connected operations
Simulator and Advanced Debugger	Simulate your application during development and use line-by-line control for debugging; MCL-Designer’s Simulator, Debugger and Verifier are unsurpassed in the industry for application development, testing and on-going maintenance
Report Generator	Boost productivity and quality assurance; automatically create comprehensive documentation at the click of a mouse so that your documentation is always in sync with your deployed applications
802.11b Wi-Fi WLAN, WWAN and wired communications	Create highly flexible mobile applications that transition seamlessly back and forth between: real-time communications and batch communications; continuously connected and occasionally connected states; WLAN, WWAN and wired communications environments

**FIGURE 1:
MCL-DESIGNER –
MIGRATE OR CREATE NEW APPLICATIONS**



Migrate Wizard

Import, convert, upgrade and enhance your MCL applications to run on Symbol's new generation of mobile computers.

"FROM"	"TO"
PDT31xx	MC3000
PDT6xxx	MC50
LDT3805	MC9000
LRT38xx	MC1000
WSS10xx	

Create New Applications

Porting a low-level "C"-like language application from DOS to mobile Windows can be complex and costly. Create your MC3000 application using MCL-Designer, and future-proof your application for the next forward migration.

Benefits

- Accelerates development time
- Minimizes on-going maintenance efforts
- Reduces total cost of application ownership

**FIGURE 2:
MCL-DESIGNER MIGRATION WIZARD –
FUNCTIONALITY AND BENEFITS**




Add New Functionality to Migrated Application

- Change button font types and font colors for easy button recognition
- Re-map keyboard keys
- Integrate host access via MCL-Designer's built-in processes
- Integrate wireless LAN and wireless WAN communications.

MCL-Designer: Migrate Wizard

- Select from list of screen aspect ratios
- Enhance from monochrome to color display
- Select different font colors for easy recognition of labels and data entry
- Add background picture or company logo
- Add toolbar with battery status, date and time

**FIGURE 3:
FORWARD MIGRATION COMPATIBILITIES
WITH THE MIGRATION WIZARD**

Symbol Terminals and Mobile Computers Supported by MCL “Migrate”				
Operating System	“FROM”		Operating Systems	“TO”
DR-DOS	PDT3000		Windows CE4.x	MC3000
	PDT3100		Windows CE5.0	MC9000
	PDT3140		Windows Mobile 2003	MC9010
	PDT3142		Windows Mobile 2003 SE	MC9050
	PDT3146		Windows Mobile 2005	MC9060
	PDT3300			MC9062
	PDT3340			MC50
	PDT6X00			MC1000
	PDT6X40			
	PDT6X42			
	PDT6X46			
	LRT3800			
	LDT3805			
	LDT3840			
	WSS1000			
	WSS1040			
	WSS1060			

MIGRATION EXAMPLE: PDT3140 TO MC3000

The following example demonstrates the powerful simplicity of MCL-Designer and the Migration Wizard by illustrating the basic steps and decision points involved in migrating an application from a Symbol PDT3140 to Symbol’s next-generation MC3000.

A reliable warehouse application with receiving, put-away, picking and shipping functions is running to your satisfaction on Symbol PDT3140 DOS terminals, meeting business needs and providing good productivity for warehouse workers. MCL-Designer’s Migration Wizard enables this mission-critical application to run on the MC3000 Windows CE-based mobile computers with minimal effort.

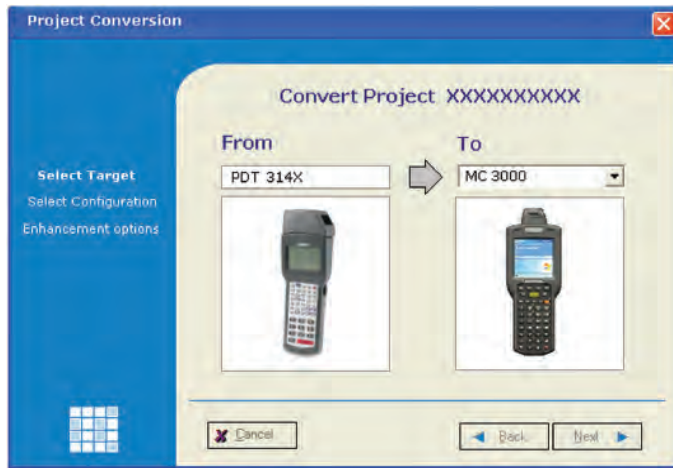
- If MCL-Collection was utilized to create the warehouse application, the MCL-Designer Migration Wizard enables rapid, easy and seamless forward migration of the application to the MC3000.
- If a low-level ‘C’ like language or C++ was used to create the application for your PDT3140 terminals, you will need to re-write the application each time you want to migrate the application to a new platform, such as, in this case the MC3000. By selecting MCL-Designer to re-develop the PDT3140 warehouse application to run on the

MC3000, the application can be seamlessly migrated to future hardware platforms as they come to market. And choosing MCL-Designer allows the creation of the MC3000 application in record time — much faster than C++ or Visual Basic. The result is a dramatic reduction in the total cost of ownership of your application through:

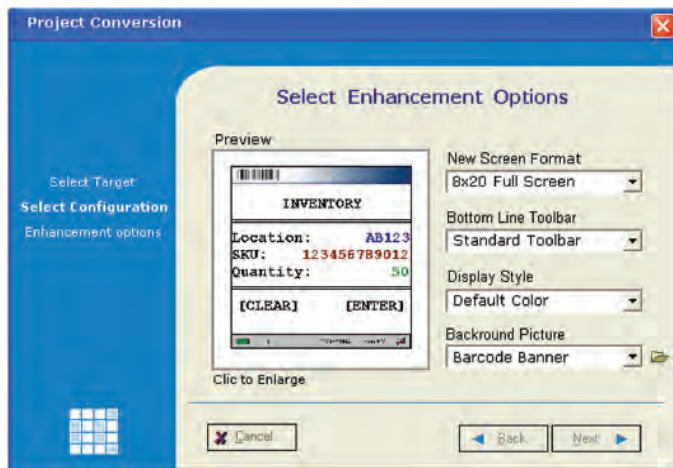
- A major reduction in application development time
- The elimination of the need to re-write the application for each new platform
- The significant extension of the lifetime of the application
- A significant reduction in ongoing application maintenance

Regardless of whether you used MCL-Designer to create your PDT3140 application, or are using MCL-Designer for the first time to create your MC3000 application, the cross-platform compatibilities and forward migration paths will preserve your investment. As Symbol continues to introduce new mobile computers, new capabilities, and new operating systems, MCL will continue to help you seamlessly blend your various requirements into an efficient working environment.

THE MIGRATION PROCESS

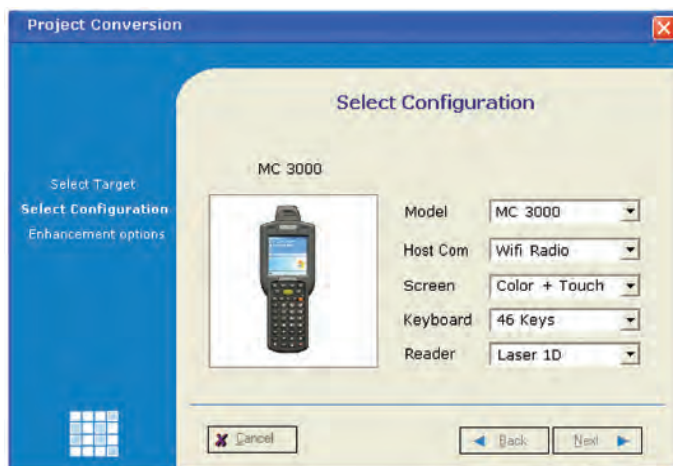


To forward migrate your PDT3140 MCL application into an MC3000 MCL application, download the V2 to V3 Migration Wizard Plug-In for MCL-Designer from MCL's Web site at www.mcl-collection.com. Select MCL-Designer's "Import from V2" function.



MCL-Designer examines the project to be imported. If the project is a PDT3140 MCL application, MCL-Designer automatically launches the Migrate Wizard, which steps you through the entire forward migration process.

ENHANCE THE LOOK AND FEEL



During application migration, MCL-Designer can enhance your PDT3140 MCL application to take advantage of the MC3000 form factor. For instance, the PDT3140 has an 8x20 display. If MCL-Designer does a straight conversion, the MCL application uses only the top left-hand 8x20 characters of the MC3000 display. However, by enhancing during migration by simply selecting the "8x20 Full Screen" wizard option, the PDT3140 screens are automatically laid out to use the full MC3000 display, automatically converting to an appropriate larger font and field sizes.

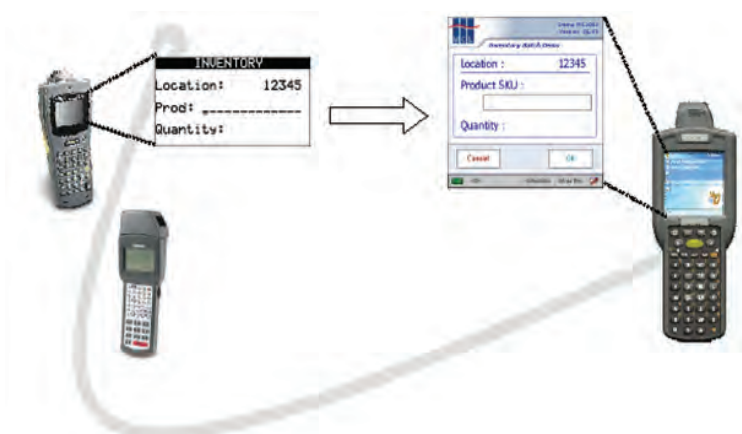
Options to automatically enhance the look and feel of your MCL application on the MC3000 include:

- A variety of screen aspect ratios to support a variety of terminal form factors and enable you to maximize the use of your display's real estate for your application functionality
- Various font colors for fast, easy recognition of labels and data entry (for example, red for bar code input data and green for keyboard input data)
- A toolbar to provide valuable information to users, such as battery status, date and time
- A flexible background — color selection for easier viewing, your logo for company branding, or a corporate template

After migration is complete, you have the choice to either deploy the application “as is,” or further enhance the look and feel of your application. Some examples include:

- Change button font types and font colors for easy recognition, such as red for “Cancel” buttons or green for “OK” buttons
- Make your logo a hot key that displays critical contact information when touched, including your service support phone number, e-mail address, or Web site
- Re-map keyboard keys to meet specific user requirements, for example, to simplify use with a gloved hand, or to accommodate a user handicap, or right- or left-handed usage

**FIGURE 4:
BEYOND SIMPLE APPLICATION MIGRATION:
ENHANCED LOOK AND FEEL**



MIGRATING YOUR APPLICATION TO THE MC3000: FOUR EASY STEPS GETTING STARTED ON YOUR MC3000 PROJECT

- Enter the Symbol Download area on www.mcl-collection.com
Select: Version 3 Environment → The Software → MCL-Designer.
Download and install:
 - Designer engine
 - Designer Device Plug-In for the MC3000
 - V2 ➔ V3 Migrate WIZARD Plug-In
- Launch MCL-Designer
 - To develop a new MC3000 application, simply modify the sample project
 - To migrate an existing application, just launch the Migrate Wizard by selecting File → Project → Import from V2
- The easy-to-use wizard will walk you through the steps and your MCL application will be ready to launch the day you receive your new MC3000 mobile computers — no hardware required
- Deploy your application using the latest MCL-Collection deployment environment

In addition to migrating your applications to newer devices, the Migration Wizard allows you to take full advantage of options offered on new mobile computers, including color, larger screen sizes and more.

CROSS-PLATFORM FUNCTIONALITY

Applications that have been developed with MCL-Designer provide true interoperability and platform independence. The same application can be easily ported throughout your enterprise to mobile computers with different form factors and different operating systems — from Palm OS and Pocket PC, to Windows CE, Windows CE .NET and Windows Mobile. Development time is reduced, deployment time is reduced, support requirements are reduced, and employee training time is reduced. Capital expenditures and operating costs are minimized — and your application investment dollar is maximized.

Porting Assistance

MCL-Designer offers many advanced features to assist you in porting your MCL application to a mobile computer with a different form factor or different capabilities. Consider the issues involved in porting your application between mobile computers with different screen dimensions — some

objects may not fit within the boundaries of the new mobile computer's display. MCL-Designer's graphical development environment displays all elements both on and off the screen. The screen layout is then easily modified to accommodate all objects with simple drag-and-drop actions that have no effect on the logic of the application.

Now consider the issues involved in porting your application between mobile computers with different capabilities. Your current mobile computer is voice capable and your MCL application uses voice recognition. However, the new mobile computer is not voice capable;

therefore the voice recognition function in your current application will not work on the ported mobile computer. While traditionally this scenario would require programming to enable the application on the new device, MCL recognizes that the voice recognition function is not supported and simply utilizes the simultaneous keyboard input with the original operation. Your application runs without issue on the ported mobile computer with minimal programming requirements.

**FIGURE 5:
CROSS-PLATFORM COMPATIBILITY**

MCL-Collection Cross-platform Compatibility Matrix for Symbol Mobile Computers				
Operating Systems	Windows CE 4x Windows Mobile 2003	Pocket PC 2003	Windows CE 3.0	Palm OS 4.1
	CROSS-PLATFORM COMPATIBLE			
Compatible Supported Symbol Mobile Computers	MC3000	PDT8100	VRC7942	SPT1550
	MC9000	PDT8137	VRC7946	SPT1800
	MC9010	PDT8142		SPT1834
	MC9050	PDT8146		SPT1842
	MC9060	PPT2800		SPT1846
	MC9062	PPT2837		
	MC50	PPT2842		
	PPT8800	PPT2846		
	PPT8846	PDT8000		
	PPT8860	PDT8037		
	PPT8866	PDT8046		
		PDT8056		

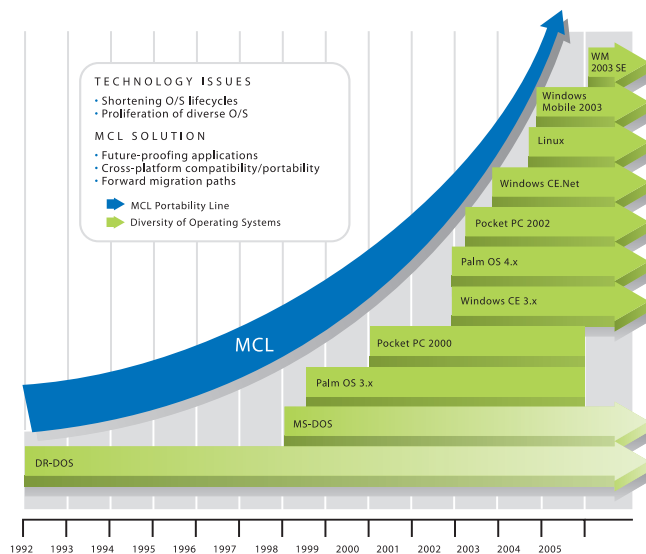
FUTURE PROOFING YOUR APPLICATION INVESTMENT

Technology continues to advance, changing at a more rapid pace than ever before. As the lifecycle of operating systems is reduced, the concurrent existence of diverse operating systems increases, threatening your application investment dollar (See Figure 6).

Symbol and MCL Technologies are working together to preserve your application development investments by providing forward migration paths and cross-platform capabilities — providing true future proofing for your mission-critical mobile workforce applications. Designed from the bottom

up for platform independence, MCL-Collection delivers true platform neutrality, enabling companies to deploy next-generation mobile computing devices to take advantage of superior new operating systems, powerful processors, crisp color displays, extensive memory capacity, bar code scanners, radio frequency identification (RFID), imagers, voice capabilities and high-performance wireless communications — while preserving your investment in existing applications.

**FIGURE 6:
PROLIFERATION OF MOBILE COMPUTING OPERATING
SYSTEMS — AND REDUCTION IN LIFECYCLES**



REDUCED TOTAL COST OF APPLICATION OWNERSHIP

The investment to develop an application to meet the specific needs of your enterprise is significant. Yet rapidly changing operating systems (see Figure 6), wireless communications (see Figure 7) and data capture technologies (See Figure 8) can render your applications obsolete in a short period of time, exponentially affecting the cost to keep your application current. The cost of allowing your application to become obsolete is just as high — if your applications cannot leverage the latest technology, your competitive edge will soften as your competitors take advantage of new productivity-enhancing capabilities.

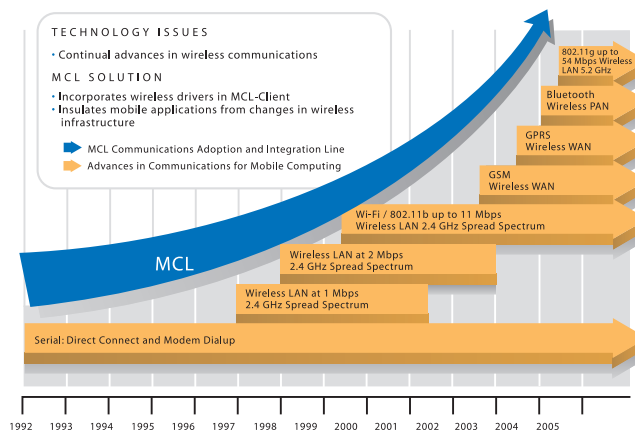
Applications developed in C or Visual Basic languages require an inordinate amount of work to maintain compatibility with technological advances. These applications must be:

- Rewritten for each new operating system
- Maintained whenever new system software, such as a driver, is released
- Maintained whenever a wireless infrastructure is upgraded
- Modified whenever a new technology is introduced, such as voice capability or RFID

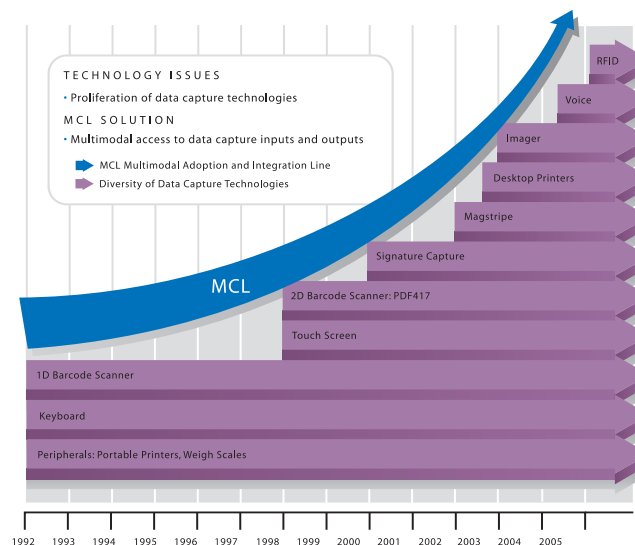
And with every modification, your total cost of application ownership increases.

Symbol and MCL Technologies continue to provide protection against this ever-increasing cost of doing business by providing development tools that enable your applications to keep pace with technology as it develops — easily and cost-effectively. The MCL-Collection software development suite keeps your mobile computing environment in tune with changes in operating systems, system software, wireless infrastructure, and new data capture technologies with minimal effort and minimal cost — delivering an outstanding total cost of ownership for your business critical applications.

**FIGURE 7:
PROLIFERATION OF WIRELESS
COMMUNICATION PROTOCOLS**



**FIGURE 8:
PROLIFERATION OF DATA CAPTURE
TECHNOLOGIES**



THE BENEFITS OF THE MCL-COLLECTION SOFTWARE SUITE

Core competencies in development tools for data capture, mobile workforce applications development, deployment and management

High productivity development environment to create applications that integrate data capture technologies, wireless communications and mobile computing

Development environment to create multimodal applications combining technologies such as bar code scanners, touch screens, keyboards, signature capture, imagers, radio frequency identification, displays, printers and voice recognition

Flexible, modular deployment architecture

- Building blocks to customize host access, network size and communications modes.
- Easy concurrent access to host applications, ODBC- compliant databases, warehouse management systems (WMS) and enterprise resource planning (ERP) systems.
- Scalable deployments from 1 to 62,500 concurrent mobile computers per server
- Efficient for small system deployments
- Powerful and optimized for large distributed system deployments
- Real-time, on-demand or batch data communications
 - Seamless, transparent transitions back and forth between these modes of communication
- Continuously, casually connected users or remote operation
 - Seamless, transparent transitions back and forth between states of connection

Framework so you can focus on functional business issues, and not on implementation issues and constantly changing low-level technologies such as operating systems, wireless infrastructures, and data capture methods

A focus on minimizing your total cost of application ownership:

- High-productivity development environment
- Multimodal approach
- Low on-going maintenance effort
- Modular, flexible architecture
- Easy application deployment and management
- Cross-platform compatibilities
- Forward migration paths
- Future-proofed applications
- Investment preservation

Benefits to your organization from data capture, mobile worker applications created using MCL-Collection:

- A mobilized workforce
- Workforce productivity improvements
- Cost reductions
- Competitive advantages

About MCL Technologies

MCL Technologies is a recognized leader in delivering high-productivity software development tools for mobile workforce application development, deployment, and management. Its enterprise-ready, standards-based software suite, MCL-Collection, seamlessly integrates the latest technologies with mobile computer, multi-manufacturer, cross-platform compatibility. Through the integration of mobile computing, wireless infrastructures, and data capture technologies like barcode scanners, radio frequency identification, and voice recognition, MCL-Collection helps organizations deploy mission critical and on-demand multimodal applications to improve workforce productivity, reduce costs, and achieve competitive advantage. Since 1992, MCL-Collection has been implemented in thousands of locations around the world by large and small organizations with sectors of activities as varied as retail, banking, healthcare, government, transportation and logistics, warehousing, field service, and manufacturing. More information is available at <http://www.mcl-collection.com>.



Corporate Headquarters
MCL Technologies Headquarters
Chaussée de Bruxelles, 572
1410 Waterloo – Belgium
Tel: +32.2.724 35 00
Fax: +32.2.724 35 04
marketing@mcl-collection.com
support@mcl-collection.com

MCL Technologies US – Competence Centre
Competence.usa@mcl-collection.com

MCL Technologies UK – Competence Centre
Competence.uk@mcl-collection.com

MCL Technologies Ireland – Competence Centre
Competence.ie@mcl-collection.com

MCL Technologies NL – Competence Centre
Competence.nl@mcl-collection.com

About Symbol Technologies

Symbol Technologies, Inc., The Enterprise Mobility Company™, is a recognized worldwide leader in enterprise mobility, delivering products and solutions that capture, move and manage information in real time to and from the point of business activity. Symbol enterprise mobility solutions integrate advanced data capture products, radio frequency identification technology, mobile computing platforms, wireless infrastructure, mobility software and world-class services programs under the Symbol Enterprise Mobility Services brand. Symbol enterprise mobility products and solutions are proven to increase workforce productivity, reduce operating costs, drive operational efficiencies and realize competitive advantages for the world's leading companies. More information is available at www.symbol.com



Corporate Headquarters
Symbol Technologies, Inc.
One Symbol Plaza
Holtsville, NY 11742-1300
TEL: +1.800.722.6234/+1.631.738.2400
FAX: +1.631.738.5990

For Asia Pacific Area
Symbol Technologies Asia, Inc.
(Singapore Branch)
Asia Pacific Division
230 Victoria Street #05-07/09
Bugis Junction Office Tower
Singapore 188024
TEL: +65.6796.9600
FAX: +65.6337.6488

For Europe, Middle East and Africa
Symbol Technologies
EMEA Division
Symbol Place, Winnersh Triangle
Berkshire, England RG41 5TP
TEL: +44.118.9457000
FAX: +44.118.9457500

For North America, Latin America and Canada
Symbol Technologies
The Americas
One Symbol Plaza
Holtsville, NY 11742-1300
TEL: +1.800.722.6234/+1.631.738.2400
FAX: +1.631.738.5990

Symbol Web site
For a complete list of Symbol subsidiaries and business partners worldwide contact us at: www.symbol.com
Or contact our pre-sales team at:
www.symbol.com/sales



Part No. MCL-WP Printed in USA 10/05 © Copyright 2005 Symbol Technologies, Inc. All rights reserved. Symbol is an ISO 9001 and ISO 9002 UKAS, RVC and RAB Registered company, as scope definitions apply. Specifications are subject to change without notice. Symbol® is a registered trademark, and The Enterprise Mobility Company is a trademark of Symbol Technologies, Inc. All other trademarks and service marks are proprietary to their respective owners. For system, product or services availability and specific information within your country, please contact your local Symbol Technologies office or Business Partner.