

# PRODUCT OVERVIEW

## Indoor Positioning System

IPS ALLOWS ORGANIZATIONS TO LOCATE AND TRACK EMPLOYEES AND ASSETS AT ALL TIMES USING ANY DISCOVERABLE BLUETOOTH DEVICE.

### Increased Awareness with IPS.

The Indoor Positioning System allows organizations to locate and track employees and assets at all times using any Bluetooth device, including MOTOTRBO radios equipped with a Bluetooth Adapter, smart phones and Bluetooth tags. The solution provides real-time location data of radio and mobile phone users using strategically placed Bluetooth Positioning Beacons installed in key areas of a facility, and connected over a LAN.

IPS provides the backbone necessary to enable system integrators to create intelligent location-based services: e.g. emergency response, panic alerting, guard touring, entrance/exit control, critical area protection, and intelligent lone worker solutions.

IPS  Bluetooth

Teldio 

Communicating Beyond Frequencies™

# Locating and tracking, made easy.

## Locating Employees

Locating employees with IPS becomes simple and easy with the use of Bluetooth technology. Virtually any Bluetooth device in discoverable mode can be traced, tracked and logged. From smart phones, to MOTOTRBO radios with Bluetooth accessories, to Bluetooth rechargeable tags, tracking employees can become an automatic afterthought.

Ease the process of tracking and locating employees and assets with the use of Bluetooth enabled tags, mobile devices and two-way radios.

## Tracking Assets

Several readily available Bluetooth products on the market can easily enable any organization to track its mobile or valuable assets. From laptop computers in office buildings to forklifts in large manufacturing facilities, IPS-based solutions are easily tailored to uniquely fit organizations' needs. Two of the many recorded beneficial uses of IPS are automatic notifications of asset displacements and location verification via the user interface.



The User Interface, accessible from the LAN with proper password identification, is both intuitive and easy to use.



# Customized solutions.

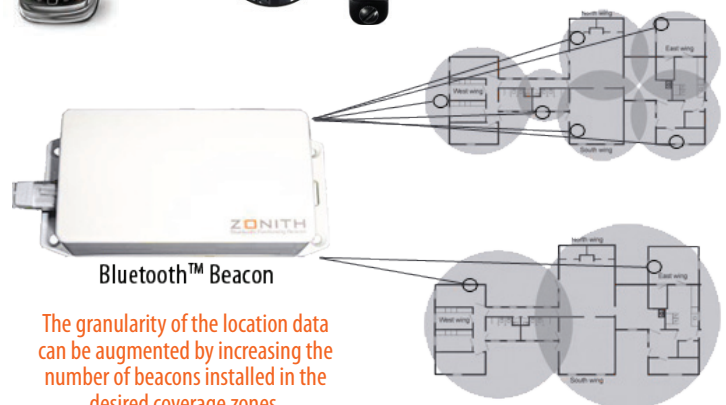
## More Beacons, More Granularity!

IPS automatically locates and tracks employees and assets via Bluetooth beacons that are strategically placed in the desired covered zones. Beacons have a maximum range of 300 feet and can be adjusted to cover the desired area. They have either internal or external antennas, are powered either by a power supply or PoE (power over Ethernet), and communicate with the IPS server through the Local Area Network. The location information is displayed on a desktop application accessible over the LAN. The beacons can be hidden behind walls or ceiling panels, discrete or visible as need be.

The number of beacons installed to service the desired coverage zones defines the granularity of the location data. The more beacons are installed, the more the information will be precise.



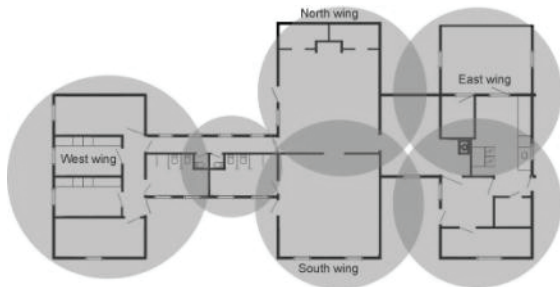
A variety of Bluetooth™ accessories capable of being in "discovery mode" can be synced with the IPS application for easy location tracking.



The granularity of the location data can be augmented by increasing the number of beacons installed in the desired coverage zones.



# Tailored solutions with location data.

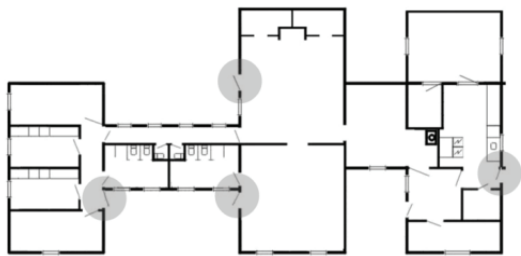


ACS<sup>Plus</sup> + IPS<sup>Bluetooth</sup>

## Comprehensive Positioning

The Indoor Positioning System can track any Bluetooth device registered in its database. As a synced Bluetooth device pairs and un-pairs at known locations, IPS records the time and date of its movements. By consulting the desktop interface, employee location records can easily be found and monitored. When IPS is coupled with the Alarm Control System (ACS), the solution can enable employees to quickly notify supervisors of emergencies by pressing a panic button on their mobile device. A message is then sent to the appropriate response team with the employee's alarm notification type and his last known time-stamped location.

Increase efficiency and decrease response-times with panic button alerting and location-based data by coupling ACS and IPS.

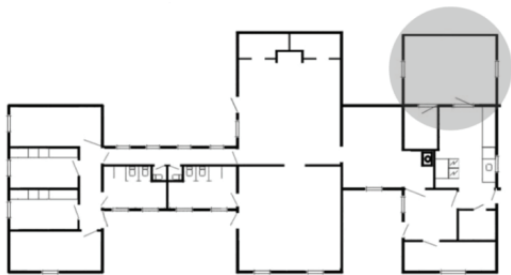


ACS<sup>Plus</sup> + IPS<sup>Bluetooth</sup>

## Area Entrance Notification

With its logging details, IPS can be used to monitor the ins and outs at targeted entrance and exit points with data on time of entry and exit, the location by beacon, and the employee's ID. IPS is a cost effective solution to monitor traffic in sensitive or restricted areas. IPS can also be coupled with the Alarm Control System (ACS) to trigger alarm notifications if employees or assets enter or leave certain zones. By doing so, alarm notification messages are automatically sent to specific individuals to inform them of the situation at hand.

Easily track assets and employees with IPS, and send alarm notifications through ACS triggered by a change in their location.



CLW + IPS<sup>Bluetooth</sup>

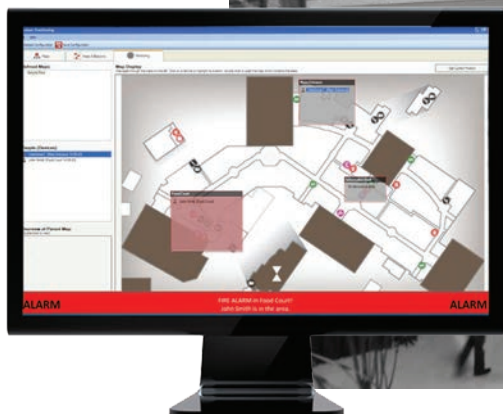
## Critical and Safe Area Protection

IPS can be used to create critical or safe areas. When an employee enters a designated critical zone, IPS automatically activates the Centralized Lone Worker (CLW) application to ensure his safety and wellbeing. To do so, CLW pings the employee every predetermined interval of time; the employee's response in a timely manner confirms that he is alright. If the employee does not respond to CLW, an alarm message is then sent to the appropriate response individual or team for them to investigate the situation. Safe areas work in the opposite way, as CLW is automatically turned off when an employee enters a designated safe zone, for example the cafeteria or the offices.

Automatically improve employee safety and security by implementing critical and safe areas with CLW and IPS.

\* To learn more about Teldio's complimentary applications, visit [www.teldio.com/main/products](http://www.teldio.com/main/products)

When a distressed employee presses the panic alarm button, respond teams are sent his location data to rapidly come to his help.



# Feature-rich Application.

## Graphical Overview

IPS provides a clear graphical overview of employees' locations within a building, enabling control room staff to immediately identify where their resources are. Each device is represented on the overview map and identified by the owner's name and job title.

## Reporting Tools

IPS records a person's position and movements within a building, and can provide a history of their whereabouts. This information is available simply by selecting a user on the user interface. Reports of employee whereabouts can also be tabulated.

## Administrator Access

The IPS graphical display can be accessed through a browser from any computer or PDA connected over the LAN. Access is limited to password protected authorized personnel.

## Restricted Access Alarms

IPS uses on-screen alarms and mobile notification messages to simultaneously notify dispatchers and mobile staff if unauthorized people or assets enter restricted areas or leave designated zones.

## Lone Working Safe Areas

IPS can be used to create 'Safe Areas'. If an employee leaves a 'Safe Area', IPS will automatically activate Lone Worker services to ensure his safety. The service is automatically deactivated upon return to a 'Safe Area'.

## Personal Panic Alarms

IPS and Panic Alerting, an ACS feature, form a complete solution. When an employee activates a panic alarm from his MOTOTRBO radio, his colleagues and/or supervisors are instantly notified of this emergency on their radios or mobile phones. They are also sent data of his last known location.



0012112012-a

**Teldio**<sup>®</sup>  
Communicating Beyond Frequencies™  
WWW.TELDIO.COM | SALES@TELDIO.COM

390 March Road, Suite 110, Kanata, Ontario, K2K 0G7 Tel 613.271.5980 Fax 613.271.9828