



ENTERPRISE

4940-5875 MHz Wireless Remote Subscriber for Premium Wireless Access

The Enterprise wireless Customer Premise Equipment (CPE) provides high performance TCP/IP transport for dedicated access, trunking and mid-range backhaul applications. Either deployed in pairs for point-to-point (PTP) service or connected from multiple sites to the Redline Ellipse series base station in point-to-multipoint (PMP) applications, Enterprise terminals economically deliver reliable, simultaneous voice, data and video services.

Superior performance allows for lower antenna heights and significantly reduced deployment costs. Flexible mounting options and full over-the-air provisioning lowers upfront costs and yields faster ROI.

Enterprise CPE offers the most cost-effective solution while Enterprise XR and Enterprise RF meet the challenge of sites requiring extra power or extended distance.

ENTERPRISE FEATURES

- ❑ Installs in minutes on buildings and street furniture
- ❑ Push all provisioning (SLAs), upgrades and Pay-as-You-Grow features over-the-air
- ❑ Comprehensive warranty, maintenance and optimization packages for lowest TCO
- ❑ Supported by industry's first CRM-integrated auto-provisioning system

REDLINE'S TECHNOLOGY ADVANTAGE

Redline's award winning Virtual Fiber™ system is advanced technology that delivers multipoint access or transport quickly and cost-efficiently. The unsurpassed fixed-wireless and nomadic-wireless solution has all your communication needs covered, while easily outperforming traditional point-to-point microwave applications.



SYSTEM AT A GLANCE

High performance wireless terminal for PTP and PMP

Three models CPE/XR/RF meet all your deployment needs

Approved bands in 4940-5875 MHz with over 10 selectable channel sizes

Simple Layer 2 network integration

Field-proven in complex urban environments

Multiple user-defined service levels per terminal

High-grade cyber security features

Small footprint and low power requirement

Optimized for HD video streaming

POWERFUL VERSATILE RELIABLE



4940-5875 MHZ WIRELESS REMOTE SUBSCRIBER - SPECIFICATIONS

OVER THE AIR

Capability	LOS/OLoS software-defined PMP (std.) or PTP terminal [software keyed option] ¹
Channel Access	Scheduler with ARQ (Automatic Repeat Request)
Channel Efficiency	Up to 93%
Channel Size	0.875/1.75/3.5/7/14 ; 1.25/2.5/5/10/20 MHz [software selectable] ¹
Modulation & Coding	BPSK to 256 QAM 7/8 ¹
RF Band	4940-5875 MHz ¹
RF Features	Dynamic and multiple Fixed Frame profiles; Fast Fusion Link Adaptation; Frequency scanning; Spectrum Analyzer
Spectral Efficiency	9.3 bits per second per Hertz
Transmission	OFDM, TDD/TDMA 2 x 2 MIMO A/B with STBC & MRRC, high-rejection Tx/Rx filtering
Wireless Throughput	Up to 186.6 Mbps UBR ¹

NETWORK

Latency	<10 ms
Layer 2	160 Mbps max. aggregate ¹
Management Interface	Redline ClearView NMS, SNMP v2c/v3, HTTP/HTTPS (Web), Telnet/ SSH (CLI), Management VLAN tagging, RADIUS User Authentication, OTA software upgrades
Metered Data Speeds	From 512 Kbps to Unlimited (Software keyed option) ¹
Network Features	Transparent bridge, DHCP pass-through, 802.1Q VLAN (Q-in-Q), VLAN, Whitelisting, Syslog, SNTP
Packet Processing	>280,000 Packets/second
Provisioning	MAC-Based; Template-based; Automatic using Redline ClearView NMS ¹
QoS	802.1p, 802.3x, CIR & PIR settings, up to 8 services per terminal
Security	Management Encryption: TLS v1.2, AES-256, SHA1

ENVIRONMENTAL

Enclosure	IP 67 (IEC 60259), Chromate finished aluminum with polycarbonate radome where applicable.
Humidity	100% humidity, condensing
Power Requirement	<17 W; standard IEEE 802.3at (PoE) over CAT5 cable 100 m (330 ft) max.
Surge Protection	Built-in: PoE and RF ports
Temperature	-40 to 60 °C (-40 to 140 °F) dynamic and thermal dissipation (no moving parts) Short-Term Storage: -50 to 85 °C (-58 to 185 °F)

COMPLIANCE

Bands:	4.9 GHz ¹ : IC RSS-111, FCC Part 90 5.2 GHz ¹ : IC RSS-210, FCC Part 15 5.4 GHz ¹ : IC RSS-210, FCC Part 15, ETSI EN 301 893 5.8 GHz ¹ : IC RSS-210, FCC Part 15, ETSI EN 302 502
EMC:	EN 301 489-1, EN 301 489-17
Safety:	IEC, EN, and UL/CSA 60950
Security	FIPS 197 compliant
Other:	RoHS compliant

PATENTS

Website:	Protected by U.S. Patents 8,711,920 8,750,365 8,711,921. Additional patents may be pending in the U.S. and elsewhere (rdlcom.com/patents).
-----------------	--

NOTES

- All specifications are subject to change without notice.*
1. Availability restricted by regional regulations, model type, software version and purchased product options key

4940-5875 MHZ WIRELESS REMOTE SUBSCRIBER - PACKAGING

ENTERPRISE CPE

Antenna

19 dBi, 15 degree, integrated MIMO

Up to +44 dBm max. EIRP*

Connections

1x 10/100 Ethernet (RJ-45)

Dimensions / Weight

204.8 x 204.8 x 98.3 mm (8.06 x 8.06 x 3.87 in)

2.0 kg (4.4 lbs) (without bracket)

In the Box

RDL3000 XP Enterprise CPE 4940-5875 MHz with 8 in (205 mm) integrated antenna, RJ45 Ethernet port, port gland and dust caps, AC-DC PoE (802.3at) and mounting kit for wall or 1.75-4.5" [25-115 mm] pole.



Enterprise CPE
8 in Int. Antenna
10/100 Eth RJ-45



Lightweight
Mounting Kit



Ethernet Port
Gland



AC PoE Power
Adapter

ENTERPRISE XR

Antenna

24 dBi, 8 degree, externally integrated MIMO

Up to +49 dBm max. EIRP*

Connections

1x 10/100 Ethernet (RJ-45)

Dimensions / Weight

368 x 368 x 116.6 mm (14.5 x 14.5 x 4.59 in)

3.13 Kg (6.9 lb) (without bracket)

In the Box

RDL3000 XP Enterprise XR 4940-5875 MHz with 14 in (360 mm) externally integrated antenna, RJ-45 Ethernet port, port gland and dust caps, AC-DC PoE (802.3at) and mounting kit for wall or 1.75-4.5" [25-115 mm] pole.



Enterprise XR
14 in Int. Antenna
10/100 Eth RJ-45



Lightweight
Mounting Kit



Ethernet Port
Gland



AC PoE Power
Adapter

ENTERPRISE RF

Antenna

Up to +25 dBm max., external MIMO

Connections

1x 10/100 Ethernet (RJ-45)

2x RF N(F)

Dimensions / Weight

306.8 x 230 x 60.3 mm (12.079 x 9.06 x 2.375 in)

2.7 kg (6.0 lbs) (without bracket or antenna)

In the Box

RDL-3000 XP Enterprise RF 4940-5875 MHz with 2x RF N(f), RJ-45 Ethernet port, port gland and dust caps, AC-DC PoE (802.3at), x2 16" (450 mm) RF jumper cables and mounting kit for wall or 1.75-4.5" [25-115 mm] pole.



Enterprise RF
Ext. Antenna 2xN(f)
10/100 Eth RJ-45



Lightweight
Mounting Kit



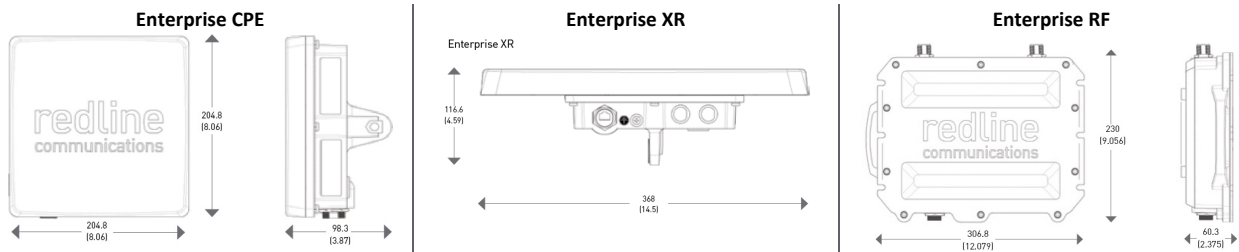
Ethernet Port
Gland



AC PoE Power
Adapter

*Max combined transmit power: MIMO mode/frequency band specific

DRAWINGS



302 Town Centre Blvd.
Markham, ON L3R 0E8 Canada

w rdlcom.com
e info@rdlcom.com

t +1.905.479.8344
tf +1.866.633.6669

Enterprise 4940-5875 MHz 20170512 © 2017 Redline Communications Inc. All rights reserved.



ENTERPRISE

3300-3800 MHz Wireless Remote Subscriber for Premium Wireless Access

The Enterprise wireless Customer Premise Equipment (CPE) provides high performance TCP/IP transport for dedicated access, trunking and mid-range backhaul applications. Either deployed in pairs for point-to-point (PTP) service or connected from multiple sites to the Redline Ellipse series base station in point-to-multipoint (PMP) applications, Enterprise terminals economically deliver reliable, simultaneous voice, data and video services.

Superior performance allows for lower antenna heights and significantly reduced deployment costs. Flexible mounting options and full over-the-air provisioning lowers upfront costs and yields faster ROI.

Enterprise CPE offers the most cost-effective solution while Enterprise XR and Enterprise RF meet the challenge of sites requiring extra power or extended distance.

ENTERPRISE FEATURES

- ❑ Installs in minutes on buildings and street furniture
- ❑ Push all provisioning (SLAs), upgrades and Pay-as-You-Grow features over-the-air
- ❑ Comprehensive warranty, maintenance and optimization packages for lowest TCO
- ❑ Supported by industry's first CRM-integrated auto-provisioning system

REDLINE'S TECHNOLOGY ADVANTAGE

Redline's award winning Virtual Fiber™ system is advanced technology that delivers multipoint access or transport quickly and cost-efficiently. The unsurpassed fixed-wireless and nomadic-wireless solution has all your communication needs covered, while easily outperforming traditional point-to-point microwave applications.



SYSTEM AT A GLANCE

High performance wireless terminal for PTP and PMP

Three models CPE/XR/RF meet all your deployment needs

Approved bands in 3300-3800 MHz with over 10 selectable channel sizes

Simple Layer 2 network integration

Field-proven in complex urban environments

Multiple user-defined service levels per terminal

High-grade cyber security features

Small footprint and low power requirement

Optimized for HD video streaming

POWERFUL VERSATILE RELIABLE

redline
communications

3300-3800 MHZ WIRELESS REMOTE SUBSCRIBER - SPECIFICATIONS

OVER THE AIR

Capability	LOS/OLoS software-defined PMP (std.) or PTP terminal [software keyed option] ¹
Channel Access	Scheduler with ARQ (Automatic Repeat Request)
Channel Efficiency	Up to 93%
Channel Size	0.875/1.75/3.5/7/14 MHz; 1.25/2.5/5/10/20 MHz [software selectable] ¹
Modulation & Coding	BPSK to 256 QAM 7/8 ¹
RF Band	3300-3800 MHz ¹
RF Features	Dynamic and multiple Fixed Frame profiles; Fast Fusion Link Adaptation; Frequency scanning; Spectrum Analyzer
Spectral Efficiency	9.3 bits per second per Hertz
Transmission	OFDM, TDD/TDMA 2 x 2 MIMO A/B with STBC & MRRC, high-rejection Tx/Rx filtering
Wireless Throughput	Up to 186.6 Mbps UBR ¹

NETWORK

Latency	<10 ms
Layer 2	160 Mbps max. aggregate ¹
Management Interface	Redline ClearView NMS, SNMP v2c/v3, HTTP/HTTPS (Web), Telnet/ SSH (CLI), Management VLAN tagging, RADIUS User Authentication, OTA software upgrades
Metered Data Speeds	From 512 Kbps to Unlimited (Software keyed option) ¹
Network Features	Transparent bridge, DHCP pass-through, 802.1Q VLAN (Q-in-Q), VLAN, Whitelisting, Syslog, SNTP
Packet Processing	>280,000 Packets/second
Provisioning	MAC-Based; Template-based; Automatic using Redline ClearView NMS ¹
QoS	802.1p, 802.3x, CIR & PIR settings, up to 8 services per terminal
Security	Management Encryption: TLS v1.2, AES-256, SHA256

ENVIRONMENTAL

Enclosure	IP 67 (IEC 60259), Chromate finished aluminum with polycarbonate radome where applicable.
Humidity	100% humidity, condensing
Power Requirement	<12 W; standard IEEE 802.3af (PoE) over CAT5 cable 100 m (330 ft) max.
Surge Protection	Built-in: PoE and RF ports
Temperature	Operation: -40 to 60 °C [-40 to 140 °F] dynamic and thermal dissipation (no moving parts) Short-Term Storage: -50 to 85 °C [-58 to 185 °F]

COMPLIANCE

Bands:	3.65-3.70 GHz ¹ : IC RSS-197, FCC Part 90Z 3.5 GHz ¹ : IC RSS-192 3.3-3.8 GHz ¹ : ETSI EN 302 326-2
EMC:	EN 301 489-1, EN 301 489-17
Safety:	IEC, EN, and UL/CSA 60950
Security	FIPS 197 compliant
Other:	RoHS compliant

PATENTS

Website:	Protected by U.S. Patents 8,711,920 8,750,365 8,711,921. Additional patents may be pending in the U.S. and elsewhere (rdlcom.com/patents).
-----------------	--

NOTES

- All specifications are subject to change without notice.*
1. Availability restricted by regional regulations, model type, software version and purchased product options key

3300-3800 MHZ WIRELESS REMOTE SUBSCRIBER - PACKAGING

ENTERPRISE CPE

Antenna

15 dBi, 24 degree, integrated MIMO

Up to +41 dBm max. EIRP*

Connections

1x 10/100 Ethernet (RJ-45)

Dimensions / Weight

204.8 x 204.8 x 98.3 mm (8.06 x 8.06 x 3.87 in)

2.0 kg (4.4 lbs) (without bracket)

In the Box

RDL3000 XP Enterprise CPE 3300-3800 MHz with 8 in (205 mm) integrated antenna, RJ45 Ethernet port port gland and dust caps, AC-DC PoE (802.3af) and mounting kit for wall or 1.75-4.5" [25-115 mm] pole.



Enterprise CPE
8 in Int. Antenna
10/100 Eth RJ-45



Lightweight
Mounting Kit



Ethernet Port
Gland



AC PoE Power
Adapter

ENTERPRISE XR

Antenna

22 dBi, 12 degree, externally integrated MIMO

Up to +49 dBm max. EIRP*

Connections

1x 10/100 Ethernet (RJ-45)

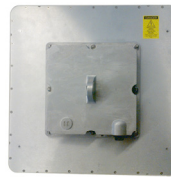
Dimensions / Weight

368 x 368 x 116.6 mm (14.5 x 14.5 x 4.59 in)

3.13 Kg (6.9 lb) (without bracket)

In the Box

RDL3000 XP Enterprise XR 3300-3800 MHz with 14 in (360 mm) externally integrated antenna, RJ-45 Ethernet port, port gland and dust caps, AC-DC PoE (802.3af) and mounting kit for wall or 1.75-4.5" [25-115 mm] pole.



Enterprise XR
14 in Int. Antenna
10/100 Eth RJ-45



Lightweight
Mounting Kit



Ethernet Port
Gland



AC PoE Power
Adapter

ENTERPRISE RF

Antenna

Up to +26 dBm max., external MIMO

Connections

1x 10/100 Ethernet (RJ-45)

2x RF N(F)

Dimensions / Weight

306.8 x 230 x 60.3 mm (12.079 x 9.06 x 2.375 in)

2.7 kg (6.0 lbs) (without bracket or antenna)

In the Box

RDL-3000 XP Enterprise RF 3300-3800 MHz with 2x RF N(f), RJ-45 Ethernet port, port gland and dust caps, AC-DC PoE (802.3af), x2 16" (450 mm) RF jumper cables and mounting kit for wall or 1.75-4.5" [25-115 mm] pole.



Enterprise RF
Ext. Antenna 2xN(f)
10/100 Eth RJ-45



Lightweight
Mounting Kit



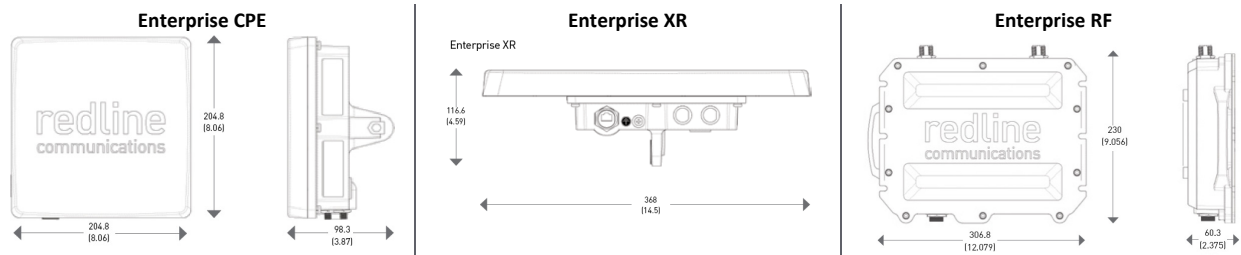
Ethernet Port
Gland



AC PoE Power
Adapter

*Max combined tx power, MIMO mode/frequency band specific

DRAWINGS



302 Town Centre Blvd.
Markham, ON L3R 0E8 Canada

w rdlcom.com
e info@rdlcom.com

t +1.905.479.8344
tf +1.866.633.6669

Enterprise 3300-3800 MHz 20170512 © 2017 Redline Communications Inc. All rights reserved.



ENTERPRISE

2300-2700 MHz Wireless Remote Subscriber for Premium Wireless Access

The Enterprise wireless Customer Premise Equipment (CPE) provides high performance TCP/IP transport for dedicated access, trunking and mid-range backhaul applications. Either deployed in pairs for point-to-point (PTP) service or connected from multiple sites to the Redline Ellipse series base station in point-to-multipoint (PMP) applications, Enterprise terminals economically deliver reliable, simultaneous voice, data and video services.

Superior performance allows for lower antenna heights and significantly reduced deployment costs. Flexible mounting options and full over-the-air provisioning lowers upfront costs and yields faster ROI.

Enterprise CPE offers the most cost-effective solution while Enterprise XR and Enterprise RF meet the challenge of sites requiring extra power or extended distance.

ENTERPRISE FEATURES

- ❑ Installs in minutes on buildings and street furniture
- ❑ Push all provisioning (SLAs), upgrades and Pay-as-You-Grow features over-the-air
- ❑ Comprehensive warranty, maintenance and optimization packages for lowest TCO
- ❑ Supported by industry's first CRM-integrated auto-provisioning system

REDLINE'S TECHNOLOGY ADVANTAGE

Redline's award winning Virtual Fiber™ system is advanced technology that delivers multipoint access or transport quickly and cost-efficiently. The unsurpassed fixed-wireless and nomadic-wireless solution has all your communication needs covered, while easily outperforming traditional point-to-point microwave applications.



SYSTEM AT A GLANCE

High performance wireless terminal for PTP and PMP

Three models CPE/XR/RF meet all your deployment needs

Approved bands in 2300-2700 MHz with over 10 selectable channel sizes

Simple Layer 2 network integration

Field-proven in complex urban environments

Multiple user-defined service levels per terminal

High-grade cyber security features

Small footprint and low power requirement

Optimized for HD video streaming

POWERFUL VERSATILE RELIABLE



2300-2700 MHZ WIRELESS REMOTE SUBSCRIBER - SPECIFICATIONS

OVER THE AIR

Capability	LOS/OLOS software-defined PMP (std.) or PTP terminal [software keyed option] ¹
Channel Access	Scheduler with ARQ (Automatic Repeat Request)
Channel Efficiency	Up to 93%
Channel Size	0.875/1.75/3.5/7/14 MHz; 1.25/2.5/5/10/20 MHz [software selectable] ¹
Modulation & Coding	BPSK to 256 QAM 7/8 ¹
RF Band	2300-2700 MHz ¹
RF Features	Dynamic and multiple Fixed Frame profiles; Fast Fusion Link Adaptation; Frequency scanning; Spectrum Analyzer
Spectral Efficiency	9.3 bits per second per Hertz
Transmission	OFDM, TDD/TDMA 2 x 2 MIMO A/B with STBC & MRRC, high-rejection Tx/Rx filtering
Wireless Throughput	Up to 186.6 Mbps UBR ¹

NETWORK

Latency	<10 ms
Layer 2	160 Mbps max. aggregate ¹
Management Interface	Redline ClearView NMS, SNMP v2c/v3, HTTP/HTTPS (Web), Telnet/ SSH (CLI), Management VLAN tagging, RADIUS User Authentication, OTA software upgrades
Metered Data Speeds	From 512 Kbps to Unlimited (Software keyed option) ¹
Network Features	Transparent bridge, DHCP pass-through, 802.1Q VLAN (Q-in-Q), VLAN, Whitelisting, Syslog, SNMP
Packet Processing	>280,000 Packets/second
Provisioning	MAC-Based; Template-based; Automatic using Redline ClearView NMS ¹
QoS	802.1p, 802.3x, CIR & PIR settings, up to 8 services per terminal
Security	Management Encryption: TLS v1.2, AES-256, SHA256

ENVIRONMENTAL

Enclosure	IP 67 (IEC 60259), Chromate finished aluminum with polycarbonate radome where applicable.
Humidity	100% humidity, condensing
Power Requirement	<12 W; standard IEEE 802.3af (PoE) over CAT5 cable 100 m (330 ft) max.
Surge Protection	Built-in: PoE and RF ports
Temperature	Operation: -40 to 60 °C [-40 to 140 °F] dynamic and thermal dissipation (no moving parts) Short-Term Storage: -50 to 85 °C [-58 to 185 °F]

COMPLIANCE

Bands:	2.4 GHz ¹ : IC RSS-201, ETSI 300-328, FCC Part 15C 2.3 GHz ¹ : IC RSS-195
EMC:	EN 301 489-1, EN 301 489-17
Safety:	IEC, EN, and UL/CSA 60950
Security	FIPS 197 compliant
Other:	RoHS compliant

PATENTS

Website:	Protected by U.S. Patents 8,711,920 8,750,365 8,711,921. Additional patents may be pending in the U.S. and elsewhere (rdlcom.com/patents).
-----------------	--

NOTES

- All specifications are subject to change without notice.*
1. Availability restricted by regional regulations, model type, software version and purchased product options key

2300-2700 MHZ WIRELESS REMOTE SUBSCRIBER - PACKAGING

ENTERPRISE CPE

Antenna

15 dBi, 35 degree, integrated MIMO

Up to +41 dBm max. EIRP*

Connections

1x 10/100 Ethernet (RJ-45)

Dimensions / Weight

204.8 x 204.8 x 98.3 mm (8.06 x 8.06 x 3.87 in)

2.0 kg (4.4 lbs) (without bracket)

In the Box

RDL3000 XP Enterprise CPE 2300-2700 MHz with 8 in (205 mm) integrated antenna, RJ45 Ethernet port port gland and dust caps, AC-DC PoE (802.3af) and mounting kit for wall or 1.75-4.5" [25-115 mm] pole.



Enterprise CPE
8 in Int. Antenna
10/100 Eth RJ-45



Lightweight
Mounting Kit



Ethernet Port
Gland



AC PoE Power
Adapter

ENTERPRISE XR

Antenna

19 dBi, 12 degree, externally integrated MIMO

Up to +45 dBm max. EIRP*

Connections

1x 10/100 Ethernet (RJ-45)

Dimensions / Weight

368 x 368 x 116.6 mm (14.5 x 14.5 x 4.59 in)

3.13 Kg (6.9 lb) (without bracket)

In the Box

RDL3000 XP Enterprise XR 2300-2700 MHz with 14 in (360 mm) externally integrated antenna, RJ-45 Ethernet port, port gland and dust caps, AC-DC PoE (802.3af) and mounting kit for wall or 1.75-4.5" [25-115 mm] pole.



Enterprise XR
14 in Int. Antenna
10/100 Eth RJ-45



Lightweight
Mounting Kit



Ethernet Port
Gland



AC PoE Power
Adapter

ENTERPRISE RF

Antenna

Up to +26 dBm max., external MIMO

Connections

1x 10/100 Ethernet (RJ-45)

2x RF N(F)

Dimensions / Weight

306.8 x 230 x 60.3 mm (12.079 x 9.06 x 2.375 in)

2.7 kg (6.0 lbs) (without bracket or antenna)

In the Box

RDL-3000 XP Enterprise RF 2300-2700 MHz with 2x RF N(f), RJ-45 Ethernet port, port gland and dust caps, AC-DC PoE (802.3af), x2 16" (450 mm) RF jumper cables and mounting kit for wall or 1.75-4.5" [25-115 mm] pole.



Enterprise RF
Ext. Antenna 2xN(f)
10/100 Eth RJ-45



Lightweight
Mounting Kit



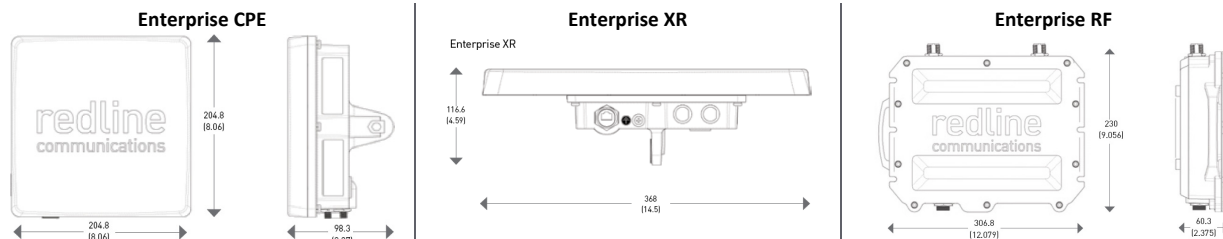
Ethernet Port
Gland



AC PoE Power
Adapter

*Max combined tx power, MIMO mode/frequency band specific

DRAWINGS



302 Town Centre Blvd.
Markham, ON L3R 0E8 Canada

w rdlcom.com
e info@rdlcom.com

t +1.905.479.8344
tf +1.866.633.6669

Enterprise 2300-2700 MHz 20170512 © 2017 Redline Communications Inc. All rights reserved.



ENTERPRISE

470-698 MHz Wireless Remote Subscriber for Premium Wireless Access

The Enterprise wireless Customer Premise Equipment (CPE) provides high performance TCP/IP transport for dedicated access, trunking and mid-range backhaul applications. Either deployed in pairs for point-to-point (PTP) service or connected from multiple sites to the Redline Ellipse series base station in point-to-multipoint (PMP) applications, Enterprise terminals economically deliver reliable, simultaneous voice, data and video services.

In TV Whitespaces (TVWS) regulated regions, the Enterprise 'cognitive radio' efficiently employs dynamical resource allocation technology access to shared spectrum (channels). Based on regional regulations, up to 10 additional non TVWS channels may be available to deliver higher throughputs or avoid local interference. The ability to provide excellent coverage through dense foliage and over water enables reliable access to areas impractical using higher band systems.

Superior performance allows for lower antenna heights and significantly reduced deployment costs. Flexible mounting options and full over-the-air provisioning lowers upfront costs and yields faster ROI.

ENTERPRISE FEATURES

- ❑ Installs in minutes on buildings and street furniture
- ❑ Push all provisioning (SLAs), upgrades and Pay-as-You-Grow features over-the-air
- ❑ Comprehensive warranty, maintenance and optimization packages for lowest TCO
- ❑ Supported by industry's first CRM-integrated auto-provisioning system

REDLINE'S TECHNOLOGY ADVANTAGE

Redline's award winning Virtual Fiber™ system is advanced technology that delivers multipoint access or transport quickly and cost-efficiently. The unsurpassed fixed-wireless and nomadic-wireless solution has all your communication needs covered, while easily outperforming traditional point-to-point microwave applications.



RF

SYSTEM AT A GLANCE

High performance wireless terminal for PTP and PMP

One model - connectorized for choice of antennas

Approved bands in 470-698 MHz with over 10 selectable channel sizes

Simple Layer 2 network integration

Field-proven in complex urban environments

Multiple user-defined service levels per terminal

High-grade cyber security features

Small footprint and low power requirement

Optimized for HD video streaming

POWERFUL VERSATILE RELIABLE



470-698 MHZ WIRELESS REMOTE SUBSCRIBER - SPECIFICATIONS

OVER THE AIR

Capability	LOS/OLoS software-defined PMP (std.) or PTP terminal [software keyed option] ¹
Channel Access	Scheduler with ARQ (Automatic Repeat Request)
Channel Efficiency	Up to 93%
Channel Size	6/12/18 MHz; 0.875/1.75/3.5/7/14 MHz; 1.25/2.5/5/10/20 MHz [software selectable] ¹
Modulation & Coding	BPSK to 256 QAM 7/8 ¹
RF Band	470-698 MHz ¹ with notch at 602-620 MHz
RF Features	Dynamic and multiple Fixed Frame profiles; Fast Fusion Link Adaptation; Frequency scanning; Spectrum Analyzer
Spectral Efficiency	9.3 bits per second per Hertz
Transmission	OFDM, TDD/TDMA 2 x 2 MIMO A/B with STBC & MRRC, high-rejection Tx/Rx filtering
Wireless Throughput	Up to 186.6 Mbps UBR ¹

NETWORK

Latency	<10 ms
Layer 2	160 Mbps max. aggregate ¹
Management Interface	Redline ClearView NMS, SNMP v2c/v3, HTTP/HTTPS (Web), Telnet/ SSH (CLI), Management VLAN tagging, RADIUS User Authentication, OTA software upgrades
Metered Data Speeds	From 512 Kbps to Unlimited (Software keyed option) ¹
Network Features	Transparent bridge, DHCP pass-through, 802.1Q VLAN (Q-in-Q), VLAN, Whitelisting, Syslog, SNMP
Packet Processing	>280,000 Packets/second
Provisioning	MAC-Based; Template-based; Automatic using Redline ClearView NMS ¹
QoS	802.1p, 802.3x, CIR & PIR settings, up to 8 services per terminal
Security	Management Encryption: TLS v1.2, AES-256, SHA256

ENVIRONMENTAL

Enclosure	IP 67 (IEC 60259), Chromate finished aluminum.
Humidity	100% humidity, condensing
Power Requirement	<17 W; standard IEEE 802.3at (PoE) over CAT5 cable 100 m (330 ft) max.
Surge Protection	Built-in: PoE and RF ports
Temperature	Operation: -40 to 60 °C [-40 to 140 °F] dynamic and thermal dissipation (no moving parts) Short-Term Storage: -50 to 85 °C [-58 to 185 °F]

COMPLIANCE

Bands:	600 MHz ¹ : IC RSS-196, FCC Part 15H
EMC:	EN 301 489-1, EN 301 489-17
Safety:	IEC, EN, and UL/CSA 60950
Security	FIPS 197 compliant
Other:	RoHS compliant

PATENTS

Website:	Protected by U.S. Patents 8,711,920 8,750,365 8,711,921. Additional patents may be pending in the U.S. and elsewhere (rdlcom.com/patents).
-----------------	--

NOTES

- All specifications are subject to change without notice.*
1. Availability restricted by regional regulations, model type, software version and purchased product options key.

470-698 MHZ WIRELESS REMOTE SUBSCRIBER - PACKAGING

ENTERPRISE RF

Antenna

Up to +26 dBm max., external MIMO

Connections

1x 10/100 Ethernet (RJ-45)

2x RF N(F)

Dimensions / Weight

306.8 x 230 x 60.3 mm (12.079 x 9.06 x 2.375 in)

2.7 kg (6.0 lbs) (without bracket or antenna)

In the Box

RDL-3000 XP Enterprise RF 470-698 MHz, RJ-45
Ethernet port, port gland, dust caps, AC-DC PoE (802.3at)
and mounting kit for wall or 1.75-4.5" (25-115 mm) pole



Enterprise RF
Ext. Antenna 2xN(f)
10/100 Eth RJ-45



Lightweight
Mounting Kit



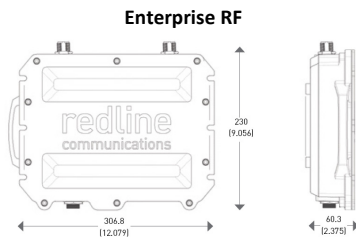
Ethernet Port
Gland



AC PoE Power
Adapter

*Max combined tx power, MIMO mode/frequency band specific

DRAWINGS



302 Town Centre Blvd.
Markham, ON L3R 0E8 Canada

w rdlcom.com
e info@rdlcom.com

t +1.905.479.8344
tf +1.866.633.6669

Enterprise 470-698 MHz 20170512 © 2017 Redline Communications Inc. All rights reserved.