

KAS-20 AVL AND DISPATCH SOFTWARE



NXDN™

DMR

FOR STANDALONE AND MULTI-CLIENT OPERATION

KAS-20 AVL and Dispatch Software is compatible with KENWOOD digital radio systems and runs on Windows and Windows Server. It offers a cost-effective way to start a basic AVL and dispatch system for a business. Both NXDN and DMR digital protocols are supported. Featuring a graphical UI and map displays for intuitive operation, the software enables seamless operations to control multiple subscriber units on the same network, employing either a client configuration or a server configuration with multiple clients. And by purchasing optional licenses, you can later add several value-added features.

Product Highlights

- Windows-based software with AVL and Dispatch features
- Low-cost initial package, optional license upgrades
- Two configurations for enhanced scalability:
 - A simple, PC-based standalone AVL & Dispatch system
 - Multi-client operation with remote server; accepts up to 8 RF systems and 10 clients
- UI design with emphasis on functionality and maneuverability
- Supports diverse digital radio systems
- User-selectable options: Location Management, Voice Dispatch, Voice Path, Multi-client capability for a server, Voice Record, and RF System functions.

Basic Features

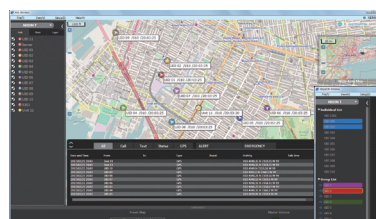
- Flexible and scalable operator positions
- Multi-role dispatching functions
 - IP Voice dispatch console
 - AVL, fleet monitoring and mapping
 - Call log and Event sharing
 - Voice recording/playback
- Supports multiple KENWOOD IP interfaces: DMR Conv, NXDN Conv, Type-C Trunking, and Gen2
- Highly optimized GUI
 - User configurable call windows and patch windows
 - Map with editable unit icons, groups, and imported layers
 - Shortcut keys and configurable key bindings
- Server managed user levels, configurations, and permissions; Up to 30 users can be registered with 10 simultaneous logins
- Server stores all communications log and data such as GPS, status, messages, audio, etc.
- Import/export asset lists (e.g. unit, group, fleet) via TSV format
- Manual/auto asset list creation

Fleet Management Features

- Location management for up to 1,000 subscriber units
- Compatible with both OpenStreetMap and scanned maps
- KML and CSV export
- Image layers can be individually switched on or off via Additional Layer Window
- Auto & manual polling, Loneworker, GPS time mark, GeoFencing, Track units, Go to home position, etc.
- Position Log & Play

Dispatch and Voice Recording Features

- Console to: Unit, Talkgroup/Channel, Console calls
- Soft vocoder: Capable of simultaneous processing of up to 8 paths
- 3 configurable software patch group
- Configurable Call Box window
 - Put any individual, talkgroup, console with priority
 - Adjustable volume/mute per call box
 - UID/alias indicator
 - Configurable color and size
- Voice recording and playback
 - Stores all voice in AMBE+2, quick replay from log window
 - Exports voice data to MP3 data format



Main AVL screen



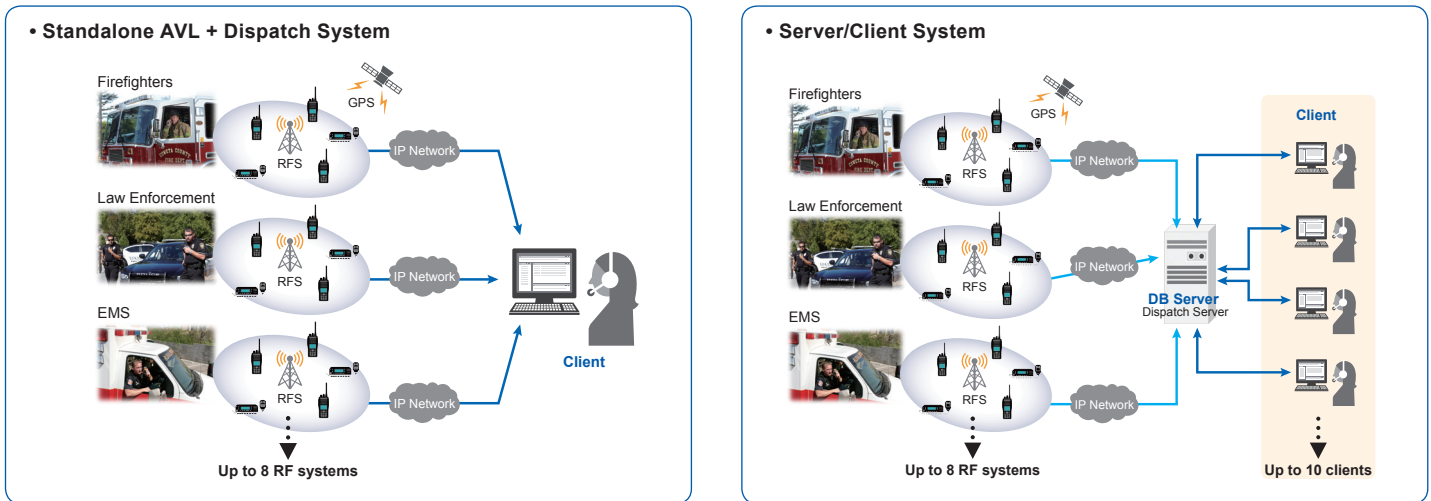
Main Dispatch screen

SYSTEM REQUIREMENTS

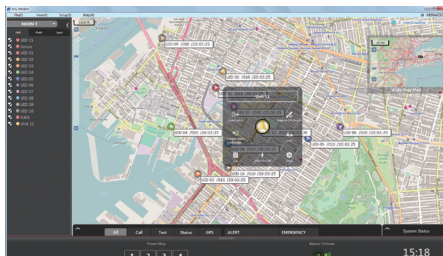
	DISPATCH CLIENT SOFTWARE KAS-20C	DISPATCH SERVER SOFTWARE KAS-20S
Operating System	Microsoft Windows 7, 8.1, 10 (works on 32bit & 64bit OS)	Microsoft Windows 7, 8.1, 10 and Windows Server 2008R2, 2012R2 (works on 32bit & 64bit OS)
Processor	3.0 GHz Intel Core i5 CPU or faster	
RAM	4 GB or more	
Hard Disk Space	500 MB free space or more	50 GB free space or more
Network	1 Ethernet Port / 100BASE-T and Internet connection	
Display	1920 x 1080 or higher resolution	1024 x 768 or higher resolution
Other	Requires Microsoft .NET Framework 4.5 or 4.6 Requires Microsoft SQL Server 2014 / 2014 Express In/Out Devices: Speaker, Keyboard, Mouse, Microphone	

CONFIGURATIONS

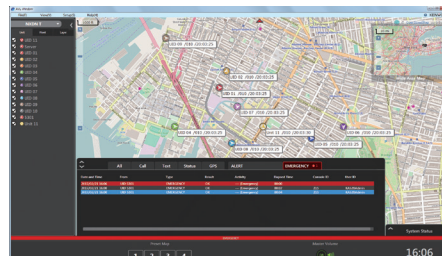
Both systems can be flexibly customized with licensing to meet user needs.



AVL & DISPATCH SCREENS



AVL: Unit Operation



AVL: Emergency



Dispatch: List Display

Specifications are subject to change without notice, due to advancements in technology.
 OpenStreetMap® is open data, licensed under the Open Data Commons Open Database License (ODbL) by the OpenStreetMap Foundation (OSMF).
 Microsoft, Windows, and SQL Server are trademarks, or registered trademarks of Microsoft Corporation in the U.S. and/or other countries.
 Intel and Core are trademarks of Intel Corporation in the U.S. and/or other countries.
 All other product names referenced herein are trademarks or registered trademarks of their respective manufacturers.

JVCKENWOOD USA Corporation
 Communications Sector Headquarters
 3970 Johns Creek Court, Suite 100, Suwanee, GA 30024-1265
 Order Administration/Distribution
 P.O. BOX 22745, 2201 East Dominguez St., Long Beach, CA 90801-5745
<http://www.kenwood.com/usa/com/>
<http://comms.kenwood.com/en/>

JVCKENWOOD Canada Inc.
 Canadian Headquarters and Distribution
 6070 Kestrel Road, Mississauga, Ontario, Canada L5T 1S8
<http://www.kenwood.com/ca/com/>
<http://comms.kenwood.com/en/>

