

# GW3-TRBO®

## ENHANCED PERFORMANCE MANAGEMENT FOR MOTOTRBO™ NETWORKS

SOLD AND SUPPORTED BY MOTOROLA

### MONITOR. MANAGE. REPORT.



One integrated solution allows centralized management of all system-wide data to display real-time activity, send critical notifications, and archive data for forensic reporting on all MOTOTRBO platforms.



### MONITOR

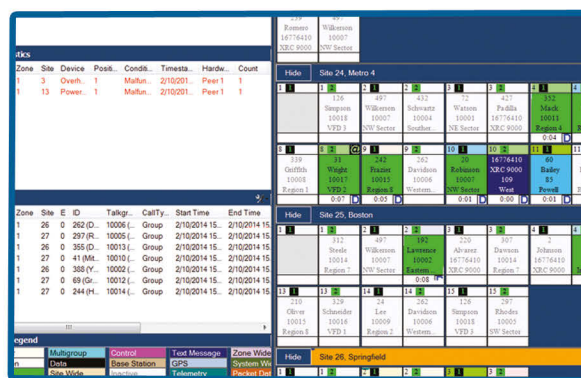
GW3-TRBO significantly reduces the amount of time spent assembling or dissecting data from various sources while substantially increasing the amount of information readily available.

GW3-TRBO gathers information from all MOTOTRBO platforms:

- ▶ Connect Plus
- ▶ Linked Capacity Plus
- ▶ Capacity Plus
- ▶ IP Site Connect
- ▶ Single Site Conventional

GW3-TRBO provides at-a-glance views of network performance from every angle:

- ▶ System
- ▶ Site
- ▶ Channel
- ▶ Slot
- ▶ Agency
- ▶ Talkgroup
- ▶ Subscriber



Channel Screen - System-wide monitoring down to the subscriber level



SysVista - A real-time dashboard view of system activity and performance

[Additional information on reverse side >](#)

### CONTACT INFORMATION

+1 903-787-7400 Genesis - International  
 +1 877-548-0465 Genesis - Toll Free US & Canada  
[moreinfo@genesishworld.com](mailto:moreinfo@genesishworld.com)  
[www.genesishworld.com/TRBO](http://www.genesishworld.com/TRBO)



GW3-TRBO is a registered trademark of GenCore Candeo, Ltd.  
 MOTOTRBO is a trademark of Motorola Trademark Holdings, LLC

# GW3-TRBO<sup>®</sup>

## ENHANCED PERFORMANCE MANAGEMENT FOR MOTOTRBO<sup>™</sup> NETWORKS

SOLD AND SUPPORTED BY MOTOROLA



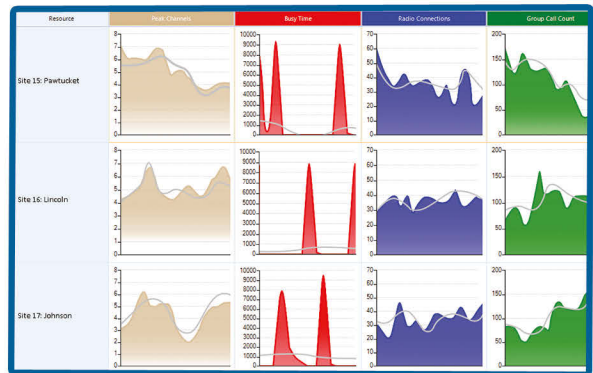
### MANAGE

- ▶ GW3-TRBO monitors networks from a single centralized location, reducing the need for on-site technician visits, thus saving time and expenses.
- ▶ When there are critical system events, instant alerts are sent to the people who need the information the most, regardless of location.
- ▶ Subscriber Access Control prevents unauthorized radios from accessing the system.
- ▶ The KPI (Key Performance Indicators) enhancement displays real-time WACN, system, zone, and site activity on calls, busies, connections, and peak usage in user-defined intervals.

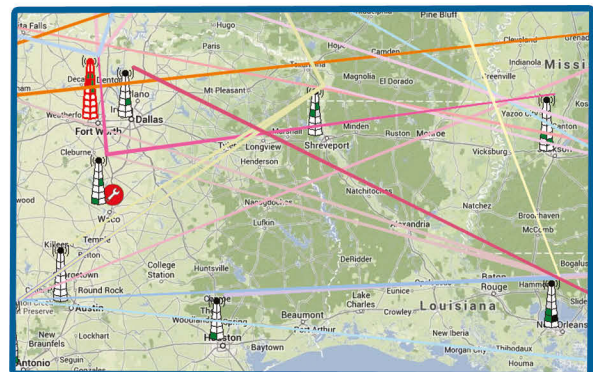


### REPORT

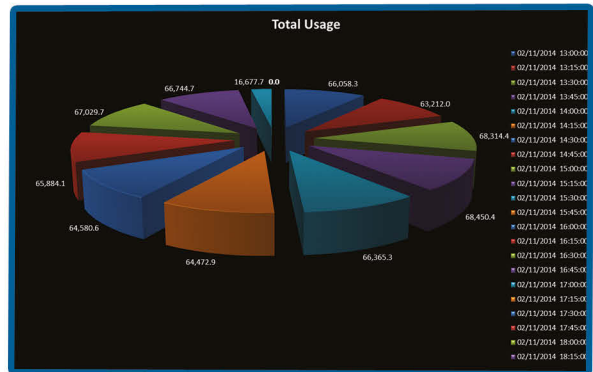
- ▶ GW3-TRBO reports clearly display usage and performance by system, site, channel, slot, talkgroup and subscriber.
- ▶ Every packet of data received from the MOTOTRBO Network is decoded, sorted and stored in MS SQL databases for up to 12 months without any loss of detail.
- ▶ Reports offer in-depth forensic analysis of archived system activity.
- ▶ Reports trend system utilization for resource planning.
- ▶ GW3-TRBO reports are flexible, using familiar MS Excel<sup>®</sup> and may be modified and saved to create custom variations.



KPI Enhancement



GW3-TRBO SkyView



Report screens

GW3-TRBO is sold and supported directly through Motorola. For more information, contact your Motorola Channel Partner.



### CONTACT GENESIS

+1 903-787-7400 Genesis - International  
 +1 877-548-0465 Genesis - Toll Free US & Canada  
[moreinfo@genesisworld.com](mailto:moreinfo@genesisworld.com)  
[www.genesisworld.com/TRBO](http://www.genesisworld.com/TRBO)



GW3-TRBO is a registered trademark of GenCore Candeo, Ltd.  
 MOTOTRBO is a trademark of Motorola Trademark Holdings, LLC