



**Commenco** Inc.  
Wireless Solutions

Business Connected.

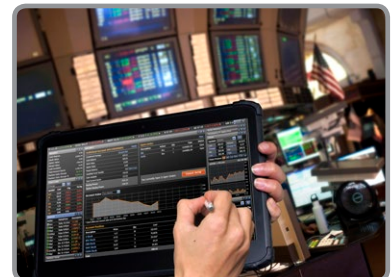
# DT313 Series Mobile Tablet

## Slim, Rugged Tablet with Large Display

The DT313 series Mobile Tablets feature the integration of brilliant 13.3" Full-HD capacitive touch screens and high performance, energy efficient Intel® Core™ i7 or Celeron® processor within slim, lightweight, durable packages. With built-in Wi-Fi, Bluetooth connection and smart card reader as well as options for RFID reader and front and back cameras modules, these tablets offer seamless information capture for instant transmission on the sales floor, in the warehouse, classroom, and in the field. Furthermore, the anti-microbial-coated DT313C-MD and DT313H-MD tablets offer health professionals effective tools to monitor, record and retrieve patient information in the healthcare center, hospital and laboratory. With their large, vivid displays, the DT313 series show a wider working area and a clear, more detailed application interface to enhance user experience and workflow.

### Features

- Intel® Core™ i7 or Celeron® dual core processor; high performance with low power consumption
- Microsoft® Windows® Embedded Standard 7, 7 Professional, Embedded 8 Standard or 8.1 Industry Pro
- 13.3" Full-HD LED-backlight screen with capacitive touch
- Large screen area to enhance user experience and working efficiency
- Anti-microbial enclosure (DT313C-MD, DT313H-MD), IP54-rated front panel
- Built-in full-slot smart card reader
- Optional Front/Back Camera and RFID Reader modules
- TPM (Trusted Platform Module) 1.2 support
- Wi-Fi and Bluetooth 4.0 LE connection
- Hot-swappable batteries and vehicle-mount charging option
- Dual monitor display support via Desktop Cradle
- Comprehensive remote device administration through server-based WebDT Device Manager software



DT313C/ DT313H/ DT313C-MD/ DT313H-MD

**Commenco** Inc.  
Wireless Solutions  
Business Connected.

## Specifications

Model	DT313C	DT313H	DT313C-MD	DT313H-MD
<b>System</b>				
CPU	Intel® Celeron®, 1.4GHz	Intel® Core™ i7, 1.8GHz	Intel® Celeron®, 1.4GHz	Intel® Core™ i7, 1.8GHz
RAM	4GB/ 8GB/ 16GB DDR3L			
Storage	32GB to 500GB flash			
Operating System	Support for Microsoft® Windows® Embedded Standard 7, 7 Professional, Embedded Standard 8 or 8.1 Industry Pro operating system			
Display	13.3" LED-backlight screen with capacitive touch			
Display Resolution	1920 x 1080 (Full-HD)			
Trusted Platform Module	TPM 1.2 support			
Fan/ Fanless	Fan			
Control Switch and Buttons	1 power button, 1 programmable button and 1 Wi-Fi switch			
Indicator	1 power/ battery status LED			
Microphone	Microphone with DSP for video conference call			
Speaker	2W built-in speaker			
SD Slot	Up to 64GB			
<b>Network Interface</b>				
WLAN	Wi-Fi 802.11ac, 2.4GHz/ 5GHz dual band			
Bluetooth	Bluetooth 4.0 LE			
<b>I/O Ports</b>				
USB 3.0 Port	1	1	1	1
Microphone-in	1	1	1	1
Headphone-out	1	1	1	1
Smart Card Reader	Full Slot, reads ISO 7816 T=0, T=1; 1.8/3/5V smart card			
DC-in	1	1	1	1
<b>Mechanical and Environmental</b>				
AC/DC Adapter	<b>Input:</b> 100 – 240V AC; <b>Output:</b> 19V DC, 6.31A			
Battery Pack	Internal 14.8V, 1880mAh/ Optional: External 14.8V, 1850mAh			
Enclosure	ABS + PC plastics (DT313C, DT313H) ABS + PC plastics; anti-microbial enclosure (DT313C-MD, DT313H-MD)			
Stylus	Yes, capacitive touch stylus			
Protective Grip	Rubber bumpers on each corner with handstrap for handling protection			
Dimensions (H x W x D)	8.5 x 13.5 x 0.75 in/ 216 x 344 x 18.9mm			
Weight	3.31 lbs/ 1.5 kg			
Water and Dust Resistance	IP54 front panel			
Regulatory	FCC Class B, CE, RoHS compliant			
Temperature	<b>Operation:</b> 0 °C to 40 °C; <b>Storage:</b> -20°C to 60°C			
Humidity	0% – 90% non-condensing			
<b>Major Options</b>				
Camera	2M pixels front camera and 5M pixels back camera with LED flash			
RFID Reader	HF 13.56MHz, ISO standard 15693, 14443A(B) & 18000-3 mode-1			

\* Specifications subject to change without notice.

## Outlook

### DT313C/ DT313H



### DT313C-MD/ DT313H-MD



## Accessories

The DT313 series has a suite of customized accessories to meet numerous deployment needs.

- Desktop Charging Cradle
- External Battery Pack

