

# DEVELOPMENT OPTIONS FOR ANDROID ENTERPRISE MOBILE APPLICATIONS

You've chosen to deploy Motorola's Android-based mobile computers in your organization — now you're ready to begin application development. Our Android-based portfolio offers the most flexible options for enterprise-class application development. Android is open source, and our mobile computers are fully compatible with standard Android development tools. In addition, Motorola's complementary tools allow you to support all the enterprise data capture features that are not supported through standard Android development tools. The result is a complete toolkit that enables the development of rich enterprise-class Android applications that allow you to fully maximize the value of your Motorola Android-based mobile computers.



## DATA CAPTURE SDK (SOFTWARE DEVELOPMENT KIT)

### CREATE NATIVE ANDROID JAVA APPLICATIONS

Certain applications may require the creation of native Android code, such as the need to utilize bar code binary data, comprehensive access to all device features or the user experience. Since Motorola's entire Android-based mobile device portfolio is fully compatible with Android, it's easy to create native applications. You can use standard Android development tools, including Google's Android SDK. Since the Android SDK does not cover all of the data capture features on Motorola mobile computers, we created the Motorola Solutions Data Capture SDK to fill in the gaps. The Motorola Data Capture SDK incorporates a multitude of APIs, including APIs for two of the most critical enterprise functions — bar code scanning and transaction processing via a magnetic stripe reader (MSR). With the Motorola Data Capture SDK, you have complete control over both of these peripherals to better maximize their functionality and value in your applications.

### IMPORTANT LINKS

- **Motorola Android Developer Community and Resources:**  
<https://developer.motorolasolutions.com/community/android>
- **Motorola Data Capture SDK:**  
<https://developer.motorolasolutions.com/docs/DOC-1874>
- **Android Application Fundamentals:**  
<http://developer.android.com/guide/components/fundamentals.html>
- **Android SDK:**  
<http://developer.android.com/sdk/index.html>
- **Android API Reference:**  
<http://developer.android.com/reference/packages.html>
- **Google's Android Training Site:**  
<http://developer.android.com/training/index.html>
- **Google's Developer News and Documents:**  
<http://developer.android.com/develop/index.html>



## DATAWEDGE FOR ANDROID

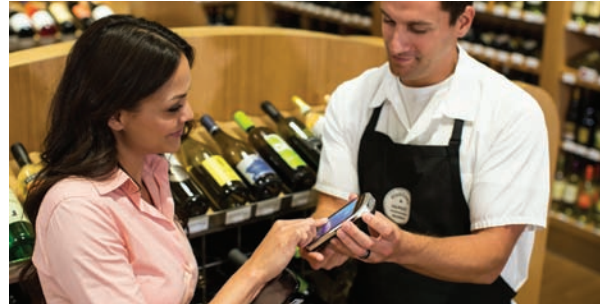
### EASILY CAPTURE ENTERPRISE DATA — NO PROGRAMMING REQUIRED

DataWedge allows you to capture and move simple text-based information into line-of-business applications — without writing any code. This Motorola utility allows you to capture bar code data from virtually any type of scanning technology — 1D laser, 1D linear imager, 2D imager and camera — as well as information from magnetic stripe readers. The profiles function allows you to automatically change the behavior of DataWedge as the user switches from one application to another, or one screen to another within a single application. Pre-configured profiles allow DataWedge to reload its settings, including disabling data capture when specified applications or screens become active. The Advanced Data Formatting (ADF) function provides data processing functions that allow you to extract and format the data per rules that you define. For example, you might require the first five characters to be entered into one field and the second set of five characters into a different field, or you might need to remove all blank spaces or add a special keystroke, such as Tab or Enter.

Once the data is formatted correctly, it is converted into keystrokes and delivered to the application, where it is received just as if the data was typed on a keyboard.

#### IMPORTANT LINKS

- **DataWedge User Guide:**  
[https://launchpad.motorolasolutions.com/documents/dw\\_user\\_guide.html](https://launchpad.motorolasolutions.com/documents/dw_user_guide.html)



## HTML5 DEVELOPMENT TOOL OPTIONS (RHOMOBILE SUITE)

### CREATE CROSS-PLATFORM APPLICATIONS THAT RUN ON MULTIPLE TYPES OF DEVICES AND OPERATING SYSTEMS — INCLUDING ANDROID

Use Motorola's RhoMobile Suite when you want to create one version of an application that can run on smartphones, mobile computers and tablets running Android, Apple iOS, Windows® Embedded Handheld, Windows® CE and Windows® Phone 8. Flexible support for development tools includes HTML5, JavaScript and Ruby. You can create native and hybrid applications that can run online and offline. Since RhoMobile Suite is fully compatible with Android, you get complete control over all features on supported Motorola Solutions mobile devices. The result? A major increase in application functionality, and a dramatic reduction in development time and cost. And since RhoMobile Suite is extensible and designed to support operating systems that don't even exist yet, the applications you create today will work on the devices of the future. RhoMobile Suite. It's always what's next.

#### IMPORTANT LINKS

- **RhoMobile Suite Developer Community — Download software, access training, development guides, sample code and more:**  
<https://developer.motorolasolutions.com/community/rhmobile-suite>
- **RhoMobile Suite Product Home Page:**  
<http://www.motorolasolutions.com/rhmobile>

For more information about Android application development options for Motorola's Android-based mobile device portfolio, please visit:  
<https://developer.motorolasolutions.com/community/android>

## **TECH BRIEF**

### DEVELOPMENT OPTIONS FOR ANDROID MOBILE ENTERPRISE APPLICATIONS

Part number: TB-ANDDEV0PT. Printed in USA 09/13. MOTOROLA, MOTO, MOTOROLA SOLUTIONS and the Stylized M Logo are trademarks or registered trademarks of Motorola Trademark Holdings, LLC and are used under license. All other trademarks are the property of their respective owners. ©2013 Motorola Solutions, Inc. All rights reserved.

