



ENSURE THE RELIABILITY AND THE HEALTH OF YOUR WLAN

AIRDEFENSE MOBILE

Ever have trouble pinpointing the exact location of a rogue device on your network? Ever investigate reports of a wireless problem in a specific area, only to find the network working fine when you get there? You likely deal with these types of WLAN management issues every day, because the performance of your network has become so crucial to improving your business operations. To help, we've enhanced our laptop-based wireless diagnostic tool, AirDefense Mobile. With distinct functions that provide visibility into your wireless network, the two modules that make up the comprehensive tool are designed to be used together, but can also be leveraged separately when needed.

The **SiteSurvey** module gives you an easy-to-use tool for designing and verifying Wi-Fi coverage. With its map-based interface, you can quickly collect data and detect weak spots or overlaps in your 802.11 a/b/g/n networks. So you can deploy new networks or troubleshoot existing networks, easily and effectively.

The **WLAN Analyzer** module provides analysis tools that give you visibility into the 802.11 protocol and higher level graphical analysis of devices and traffic patterns. So you can proactively identify and

close security holes to ensure regulatory compliance, analyze traffic in real time and review usage and performance patterns. The WLAN Analyzer also provides you a simplified way to locate and inventory your wireless devices.

With this powerful combination of design, measurement and diagnostic tools, the AirDefense Mobile solution simplifies the management of your wireless LAN.

BENEFITS

Convenient 802.11 a/b/g/n WLAN design and site assessment tools

Conduct quick and accurate scans of the network to ensure the health of your wireless LAN

Diagnose and proactively close security holes as part of a WLAN compliance policy

SITESURVEY MODULE

FUNCTIONALITY

WLAN design by survey and installation verification

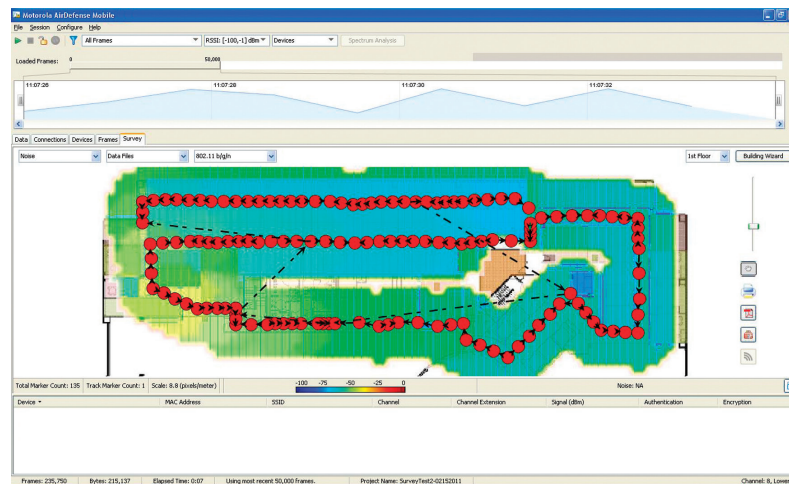
Coverage visualizations and application analysis

Network performance validation

Map-based interface detection

Multi-vendor support

Integration with AirDefense Services Platform



SiteSurvey provides a mapped layout of signal coverage, so you can see at a glance the impact of neighboring networks in local environments.

PERFORM WLAN SITE SURVEYS WITH NETWORK COVERAGE VISUALIZATION

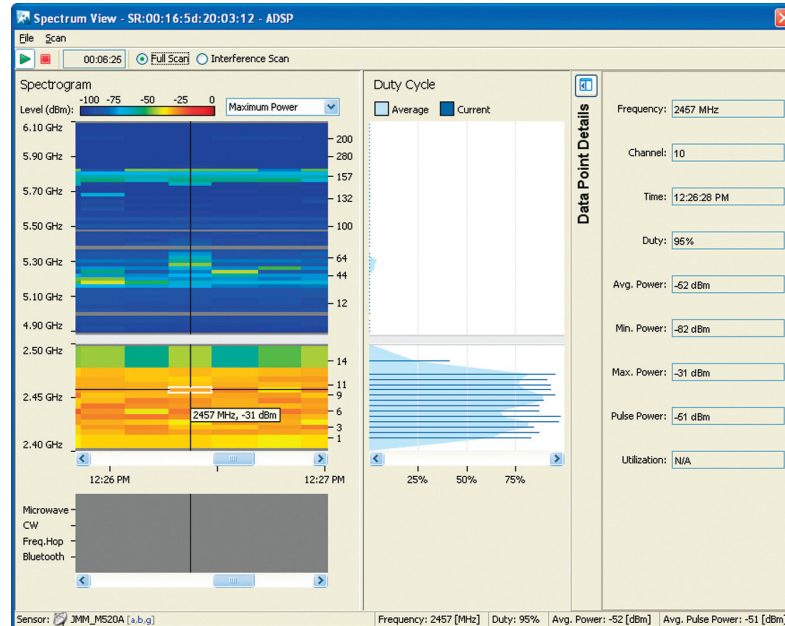
With a map-based interface for quick and easy data collection, the SiteSurvey module allows you to verify network coverage, noise, AP channel assignments, and the impact of neighboring networks in local environments. Simply import image files or formatted drawings from the AirDefense Services Platform to orient data collection and you are ready to start your wireless scan.

With a simple point and click, you can identify your location within the map, while the SiteSurvey tool collects the network's vital statistics. The statistics are then fed into a sophisticated RF propagation engine to provide you with a mapped layout of signal coverage. Use this feature to analyze metrics that affect the performance of specific wireless applications such as VoIP or video streaming. All visualizations can be viewed on a per access point, per channel, per standard or per network basis and can be exported as professional reports.

WLAN ANALYZER MODULE

FUNCTIONALITY

- Locate rogue devices
- Device discovery and inventory
- Live traffic analysis and real-time measurements
- Capture file playback for analysis and reporting
- Wireless network usage statistics and health analysis
- Identify and classify interference sources
- Reporting capabilities
- Multi-vendor support
- Integration with AirDefense Services Platform



WLAN Analyzer includes a spectrum analyzer that makes it easy to identify and classify possible sources of interference.

ANALYZE DATA IN REAL-TIME

The Live View feature lets you analyze and troubleshoot issues affecting your wireless network. With Live View, you can drill down into a live, streaming view of devices, access point IDs and channels, allowing you to review the working details of frame captures, authentication errors, AP configuration issues and network interference. With the built-in connection diagrams, you can see visualizations of Layer (2) 802.11 connectivity. Smart frame captures allow you to save and store only the data needed. You can also review and troubleshoot saved captures directly through the system, eliminating the need for investment in additional tools.

AirDefense Mobile also features user definable views for focusing on actionable data, allowing you to pinpoint problems faster. With a variety of easy-to-analyze graphs and charts, AirDefense Mobile helps you to be more productive, more proactive and more effective in maintaining your network's health.

IDENTIFY INTERFERENCE SOURCES

The AirDefense Mobile solution includes a spectrum analyzer that allows you to identify and classify possible sources of interference. With real-time spectrograms, you can easily identify possible issues and immediately take necessary steps to improve wireless performance. Trouble with elusive, intermittent interference, such as Bluetooth devices, wireless security cameras and even microwave ovens? AirDefense Mobile not only helps you identify them, it actually lets you see the impact they have on your network. So you can proactively address performance issues before your critical wireless applications are affected.

INTEGRATED MONITORING WITH THE AIRDEFENSE SERVICES PLATFORM

AirDefense Mobile is a complementary solution to the AirDefense Services Platform. Cross-integration allows synchronization of a number of configuration settings such as identifying trusted and/or neighboring Wi-Fi devices to expedite site surveys and troubleshooting. It has an intuitive user interface which, used along with AirDefense Services Platform, provides a comprehensive view of the wireless network activity.

Motorola delivers both an unrivaled indoor/outdoor wireless portfolio and the software tools you need to build and operate a trusted high performance wireless network. AirDefense Solutions reflect our holistic approach to network design, management, security and network assurance.

AIRDEFENSE MOBILE SPECIFICATIONS

Running on a Windows XP or Windows 7 operating system
AirDefense Mobile installs on a laptop with a supported 802.11 a/b/g/n wireless adapter. Coverage range is dependent on adapter.

SUPPORTED 802.11 WIRELESS CARDS

PCMCIA card adapters:

Cisco 802.11 a/b/g Cardbus Wireless – Windows XP/Vista only
LAN Client Adapter CB21AG-A-K9
Netgear WAG511 v1 or v2 Linksys® WPC55AG (v1.0, v1.1, v1.2, or v1.3)
Ubiquiti Networks SRC
CACE Technologies AirPcap N a/b/g/n Cardbus
AirMagnet® C1060 a/b/g/n Cardbus Adapter

PCI-Express adapters (with Atheros 5006EX chip set):

Lenovo P/N 40Y7026 Mini PCI-Express Adapter
Ubiquiti SRX (SuperRange Xpress) PCI-Express Card

USB:

Proxim ORiNOCO 8494 USB a/b/g/n Adapter
Ubiquiti SR71 USB a/b/g/n Adapter

SYSTEM REQUIREMENTS

Intel® Pentium® IV processor or later, 2 GHz

2 GB RAM

Windows XP SP3 (32 bit), Windows Vista (32 bit), Windows 7 (32 or 64 bit)

400 MB hard disk space for installation

To learn more about how AirDefense Mobile can help you ensure the health and reliability of your WLAN by simplifying its management, please visit us at www.motorola.com/wms