



ASTRO[®] 25 TWO-WAY RADIOS AT A GLANCE SAFETY REDEFINED





YOU ARE READY FOR THE NEXT CALL. WITH APX™, SO IS YOUR RADIO.

In an emergency, other first responders may be a few feet or several miles away. When every second counts, you need a radio you can rely on to get the job done. Since coordinating response and protecting lives is at the heart of every mission, every two-way radio transmission is crucial. Every radio has one job and one job only: to keep you safe.

ASTRO 25 is the leading Project (P25) standards-based system used by over 11,000 agencies around the world. With uncompromising real-world performance and legendary Motorola reliability, the ASTRO 25 solution continues to evolve, adding practical innovations and performance-driven capabilities that enable government agencies to protect the communities they work in and support neighboring communities through interoperability.

The APX P25 two-way radio series redefines safety in communication. APX puts the right device into the hands of the right user. Every feature and function is designed with its users in mind – from the rugged, easy to operate design to the loudest, clearest audio. The result is the ability to keep your people and community safer than ever before.



THE WORLD'S LEADING P25 PLATFORM

IMMEDIATE AND ASSURED VOICE IN AN EMERGENCY

When the emergency is critical, a call for help must get through. Motorola's ASTRO 25 system is a dedicated, communication system optimized to make sure the voice call gets through even during times of peak demand.

ACCESSIBILITY IN CHALLENGING ENVIRONMENTS

Tunnels, high rises and sub-basements create unique challenges for wireless communications, but ASTRO 25 is optimized to handle them. We offer unique solutions to minimize interference in specific environments.

RELIABLE VOICE AND DATA INTEGRATED AS ONE

Expanding your data usage while maintaining mission critical voice, ASTRO 25 provides reliable, always-available communications so multiple agencies can share voice and data communication simultaneously among their teams, deploy resources efficiently, maintain communication security and track personnel.

FUTURE READY PLATFORM

ASTRO 25 and APX radios are flexible and future- ready, adapting to your communications needs and evolving to support new technologies and applications, so you can be ready for the next call the moment it happens.

INTEROPERABILITY ON DEMAND







A variety of our APX radios work across P25 systems and digital and analog networks to achieve true interoperability. Some of these radios, such as the APX 7000/7500 offer not only this, but also the means to communicate seamlessly through any two frequency bands.



THE MOST COMPLETE LINEUP OF TWO-WAY RADIOS DESIGNED TO KEEP YOU SAFE

Agencies expect their investment to deliver maximum value and performance. From day one, every portable and mobile radio will meet your most demanding performance expectations.

ASTRO 25 PORTABLES



<p>APX 8000</p>		<p>The APX 8000 is an all-band P25 portable radio operating on the following frequency bands: 700/800 MHz, VHF, UHF Range 1 and UHF Range 2 and all of the following modes 3600/9600, SmartZone, SmartNet, Digital P25/Analog, Conventional/Trunking. Available in model 1.5 (top display only) and 2.5 (top display and front display with limited keypad) and 3.5 (top and front display with full DTMF keypad) the APX 8000 offers limitless interoperability, the clearest, loudest audio and seamless Wi-Fi connectivity in a compact form-factor featuring a rugged, submersible housing and a windporting speaker grill. The APX 8000 uses Wi-Fi for updating codeplug, firmware and FLASHport features in seconds. The Adaptive Audio Engine automatically adjusts noise suppression algorithms, microphone gain, windporting and speaker equalization for optimal intelligibility.</p>
<p>APX 7000L</p>		<p>The APX 7000L radio offers dual band interoperability in 800 MHz and VHF. Available in model 1.5 (top display only) and 3.5 (top and front display with full DTMF keypad) the APX 7000L offers backward and forward compatibility (FDMA and TDMA) with LTE supported applications such as, OTAR, POP25, Text Messaging, and GPS. The APX 7000L also provides the user with the ability to operate voice and data simultaneously. Contains a dual mic/speaker, noise suppression software, multi algorithm support, and Delta T heat and water immersion ruggedness.</p>
<p>APX 7000XE</p>		<p>The APX 7000XE radio offers dual band interoperability in one radio which can operate in any 2 of the following frequency bands: 700/800 MHz, VHF, UHF Range 1, and UHF Range 2. Complete with an exaggerated control top and available in model 1.5 (top display only) and 3.5 (top and front display with full DTMF keypad) the APX 7000XE offers backward and forward compatibility (FDMA and TDMA) with data functionality, P25 OTAR, POP25, integrated GPS, Mission Critical Wireless Bluetooth, Man Down sensor, dual mic/speaker, noise suppression software, multi algorithm support and Delta T heat and water immersion ruggedness.</p>
<p>APX 7000</p>		<p>The ideal solution for first responders, the APX 7000 radio offers dual band interoperability in one radio which can operate in any 2 of the following frequency bands: 700/800 MHz, VHF, UHF Range 1, and UHF Range 2. Available in model 1.5 (top display only) and 3.5 (top and front display with full DTMF keypad) the APX 7000 offers backward and forward compatibility (FDMA and TDMA) with data functionality, P25 OTAR, POP25, integrated GPS, Mission Critical Wireless Bluetooth, Man Down sensor, dual mic/speaker, noise suppression software, multi algorithm support, and Delta T heat and water immersion ruggedness. Supports upgrade to APX 7000L. Intrinsic Safety certified.</p>
<p>APX 6000XE</p>		<p>Designed for fire and extreme environment markets, the APX 6000XE radio offers single band interoperability in 1 of the following frequency bands: 700/800 MHz, VHF, UHF Range 1, and UHF Range 2. Complete with an exaggerated control top and available in model 1.5 (top display only) 2.5 (top display and front display with limited keypad), and 3.5 (top and front display with full DTMF keypad) the APX 6000XE offers backward and forward compatibility (FDMA and TDMA) with data functionality, P25 OTAR, POP25, integrated GPS, Mission Critical Wireless Bluetooth, Man Down sensor, dual mic/speaker, noise suppression software, multi algorithm support, and Delta T heat and water immersion ruggedness. Intrinsic Safety certified.</p>
<p>APX 6000</p>		<p>Created for the law enforcement markets, the APX 6000 radio offers single band interoperability in 1 of the following frequency bands: 700/800 MHz, VHF, UHF Range 1, and UHF Range 2. Available in model 1.5 (top display only) 2.5 (top display and front display with limited keypad), and 3.5 (top and front display with full DTMF keypad) the APX 6000 offers backward and forward compatibility (FDMA and TDMA) with data functionality, P25 OTAR, POP25, integrated GPS, Mission Critical Wireless Bluetooth, Man Down sensor, dual mic/speaker noise suppression software, multi algorithm support, and Delta T heat and water immersion ruggedness. Intrinsic Safety certified.</p>

ASTRO 25 PORTABLES

<p>APX 4000</p>		<p>Designed for the local government and public safety markets, the APX 4000 radio offers single band P25 functionality in 1 of the following frequency bands: 700/800 MHz, VHF, UHF Range 1, UHF Range 2, and 900 MHz. Available in model 2 (front display with limited keypad) and 3 (front display with full DTMF keypad) the APX 4000 offers backward and forward compatibility (FDMA and TDMA) with data functionality, POP25 integrated GPS, Mission Critical Wireless Bluetooth, Man Down sensor, dual microphone, noise suppression software, single algorithm support, and IP67 water immersion. Intrinsic Safety certified.</p>
<p>APX 3000</p>		<p>Designed and created for covert law enforcement operations, the APX 3000 radio offers single band interoperability in 1 of the following frequency bands: 700/800 MHz, VHF, UHF Range 1, and UHF Range 2. Available in model 1 (no display) the APX 3000 offers backward and forward compatibility (FDMA and TDMA) with data functionality, POP25, integrated GPS, Mission Critical Wireless, Man Down sensor, and IP 67 water immersion. All audio capabilities are managed via mission critical wireless audio accessory kits. Intrinsic Safety certified.</p>
<p>APX 1000</p>		<p>Designed for the local government, public works and utilities markets, the APX 1000 radio offers single band P25 functionality in 1 of the following frequency bands: VHF, UHF Range 1 and Range 2, 700/800 MHz and 900 MHz. Available in model 1.5 (front display and 3 softkeys), model 2 (front display with limited keypad) and 3 (front display with full DTMF keypad). The APX 1000 offers backward and forward compatibility (FDMA and TDMA) with data functionality, POP25, dual microphone, noise suppression software, and IP54 rating to protect against dust and rain.</p>



ASTRO 25 MOBILES

APX 7500		<p>Complete and ideal mobile solution for first responders, the APX 7500 radio offers dual band interoperability in one radio which can operate in any 2 of the following frequency bands: 700/800 MHz, VHF, UHF Range 1, and UHF Range 2. It provides backwards and forwards compatibility (FDMA and TDMA) and data functionality, P25 OTAR, POP25, intelligent lighting, multi-algorithm support, and integrated GPS. The APX 7500 offers a complete control head portfolio with 5 options, giving users the flexibility to choose the control head that best meets their operational needs. The APX 7500 also supports Dual Radio operation and can utilize up to 4 band of interoperability via the O7 control head; while additionally providing seamless monitoring of more than one channel at a time, as well as scanning across conventional and trunking systems.</p>
APX 6500		<p>Complete solution for the mission critical first responders, the APX 6500 radio offers single band P25 interoperability in one radio which can operate in any 1 of the following frequency bands: 700/800 MHz, VHF, UHF Range 1, and UHF Range 2. It provides backwards and forwards compatibility (FDMA and TDMA) and data functionality, P25 OTAR, POP25, intelligent lighting, multi-algorithm support, and integrated GPS. The APX 6500 offers a complete control head portfolio with 4 options, as well as high and mid-power selections. The APX 6500 also supports Dual Radio operation and can utilize up to 3 band of interoperability via the O7 control head when used with the APX 7500; additionally providing seamless monitoring of more than one channel at a time, as well as scanning across conventional and trunking systems.</p>

ASTRO 25 MOBILES

APX 4500



Ideal solution for local government and public safety, the APX 4500 radio offers single band P25 capability in one radio which can operate in any 1 of the following frequency bands: 700/800 MHz, VHF, UHF Range 1, UHF Range 2, and 900 MHz. It provides backwards and forwards compatibility (FDMA and TDMA) and data functionality, POP25, intelligent lighting, single algorithm support, and integrated GPS. The APX 4500 offers compatibility with the O2 control head, availability in dash or remote mount, as well as mid and low-power selections.

APX 1500



The APX 1500 gives you the ruggedibility and reliability you need at an affordable price. Since the APX 1500 is P25 Phase 2 capable for twice the voice capacity, you can add more users without adding more frequencies or infrastructures. It can operate in any of the following frequency bands: 700/800 MHz, VHF, UHF Range 1 and UHF Range 2. It provides ADP Privacy to ensure your voice and data communications are secure. The APX 1500 provides features like intelligent lighting, radio profiles, and unified call list, along with optional features like integrated GPS, POP25 and text messaging. The APX 1500 is the ideal solution for local law enforcement and public works users that need a durable and compact mobile.



ASTRO 25 CONTROL HEADS

09		<p>Compatible with APX 7500 and 6500 radios. Contains an extra large full color display with intelligent lighting, integrated full size DTMF keypad, large programmable one-touch buttons, dedicated siren controls, integrated response selector, and day/night mode capability.</p>
07		<p>Compatible with APX 7500 and 6500 radios. Contains large color display with intelligent lighting, multiple control head configurations with O2 and O7, motorcycle configuration available, multifunction volume/channel knob, day/night mode, and available with Lighting and Siren Controls or DTMF keypad.</p>
05		<p>Compatible with APX 7500 and 6500 radios. Provides tri-color display with intelligent lighting support, compatible with keypad microphone, can configure up to 4 O5 control head configurations, and available in motorcycle configuration.</p>
03		<p>Compatible with APX 7500 and 6500 radios. Contains full integrated DTMF keypad, hand-held control head with intuitive user interface, and large color display with intelligent lighting. Compatible with Siren and Light Interface Module.</p>
02		<p>Compatible with APX 7500, 6500, 4500, and 1500 radios. Provides XE ergonomics controls, multiple control head configuration with O2 and O7, motorcycle availability, multifunction control knob, intelligent lighting, with a built in 7.5 watt speaker.</p>

ASTRO TWO-WAY PORTABLES

SELECT THE RIGHT PRODUCT TO ENSURE SAFETY AND RELIABILITY

Features	APX 8000	APX 7000L	APX 7000	APX 7000XE	APX 6000	APX 6000XE	APX 4000	APX 3000	APX 1000
Supported Frequencies									
VHF (136 - 174) Power Level 6W	●	●	●	●	●	●	●	●	●
UHFR1 (380 - 470) Power Level 5W	●		●	●	●	●	●	●	●
UHFR2 (450 - 520) Power level 6W	●		●	●	●	●	●	●	●
700/800 MHz (764 - 870) Power Level 3W	●	●	●	●	●	●	●	●	●
900 MHz (896 - 901, 935 - 940) Power Level 2.5W							●		●
Protocols and Systems Supported									
Multi-Band Capable	●	●	●	●					
Dynamic Dual Mode (FDMA/TDMA)	●	●	●	●	●	●	●	●	●
Analog Conventional	●	●	●	●	●	●	●	●	●
P25 Phase I (FDMA) Conventional and Trunking	●	●	●	●	●	●	●	●	●
P25 Phase II (TDMA) Trunking	●	●	●	●	●	●	●	●	●
Smart Net/Smart Zone Analog and Digital Trunking	●	●	●	●	●	●	●	●	●
3600 and 9600	●	●	●	●	●	●	900 MHz Only	●	
MDC-1200 Analog Signaling	●	●	●	●	●	●	●	●	●
Standard Channels	3000	3000	3000	3000	1000	1000	512	512	512
Encryption Capability									
Encryption Capability (Optional)	AES and DES	AES and DES	AES and DES	AES and DES	AES and DES	AES and DES	AES ONLY	AES and DES	
Multi-key	128	128	128	128	64	64	48	48	48
ADP	●	●	●	●	●	●	●	●	●
Radio Authentication	●	●	●	●	●	●	●	●	●
POP 25	●	●	●	●	●	●	●	●	●
P25 OTAR	●	●	●	●	●	●		●	
Applications									
Rugged	Std IP67, Delta T option	Std IP67, Delta T option	Std IP67, Delta T option	IS & Delta T Std	Std IP67, Delta T option	IS & Delta T Std	Std IP67, Delta T option	Standard IP67	Standard IP54
Models	1.5, 2.5, 3.5	1.5, 3.5	1.5, 3.5	1.5, 3.5	1.5, 2.5, 3.5	1.5, 2.5, 3.5	2 and 3	1	1.5, 2, and 3
Colors	Black, Yellow, Green	Black	Black, Yellow, Green	Black, Yellow, Green	Black, Yellow, Green	Black, Yellow, Green	Black	Black	Black
Color Sleeves/Stickers			Sleeves Only Red, Orange, Blue		Sleeves Only Red, Orange, Blue		Metallic Display Stickers only		Metallic Display Stickers only
Mission Critical Wireless (Bluetooth)	●	●	●	●	●	●	●	●	
Option Board/Expanded Mem	●	●	●	●					
Mandown	●	●	●	●	●	●	●	●	
GPS	●	●	●	●	●	●	●	●	●
Integrated Voice and Data	●	●	●	●	●	●	●	●	●
Enhanced Data	●	●	●	●	●	●	●	●	
Voice Announcement	●	●	●	●	●	●	●	●	●

ASTRO TWO-WAY MOBILES

SELECT THE RIGHT PRODUCT TO ENSURE SAFETY AND RELIABILITY

Features	APX 7500	APX 6500	APX 4500	APX 1500
Control Heads				
Control Heads	02, 03, 05, 07, 09	02, 03, 05, 07, 09	02	02
Max. # of Control Heads	4	2	1	1
Rugged (IP Rating)	IP54	IP54	IP56	IP54
Protocols and Systems Supported				
Multi-Band Capable	●			
Dynamic Dual Mode Capable (FDMA/TDMA)	●	●	●	●
Analog Conventional	●	●	●	●
P25 Phase I (FDMA) Conventional and Trunking	●	●	●	●
P25 Phase II (TDMA) Trunking	●	●	●	●
SmartNet/SmartZone Analog and Digital Trunk	●	●	●	●
3600 and 9600	●	●	3600 or 9600	●
MDC-1200 Analog Signaling	●	●	●	●
Standard Channels	3000	1000	512	512
Mounting Options				
Dash Mount	●	●	●	●
Remote Mount	●	●	●	
Motorcycle	●			
Control Station	●	●	●	●
Console	●			
Encryption Capability				
Encryption Capability (Optional)	AES and DES	AES and DES	AES Only	ADP
Multi-key	128	64	48	
ADP	●	●	●	●
POP 25	●	●	●	●
P25 OTAR	●	●		
Applications				
Integrated Voice and Data	●	●	●	●
Enhanced Data	●	●	●	
Integrated GPS - Outdoor Location	●	●	●	●
Radio Authentication	●	●	●	●
Voice Announcement	●	●	●	●
Dual Radio Capability	●	●		

ADVANCED SOFTWARE FEATURES

DIGITAL TONE SIGNALING – Instantly alerts large groups of on-duty and off-duty responders over their APX radio to reduce response time.

LEX L10 COLLABORATION – Uses the LEX L10 Mission Critical LTE Handheld to remotely manage the zone, channel, volume and monitor signal strength and battery of the APX portable radio using Mission Critical Bluetooth.

WIFI – Quickly update codeplug, firmware and FLASHport features using the high-speed of WiFi 802.11n with WEP, WPA and WPA-2 security, while maintaining voice communications.

INTELLIGENT LIGHTING – Uses color alerts to notify you of the radio mode, potential emergencies or specific events.

RADIO PROFILES – Radios can be configured to adjust audio level, lighting and tones through user selected or automated options. Whether on surveillance or working in bright sunlight, you can customize settings as needed.

EXTREME AUDIO PROFILE – Intelligent 2-microphone noise reduction software and the latest AMBE vocoder dynamically adjusts for changing high noise environments.

TEXT MESSAGING – Offers a freeform or canned messaging solution so you can efficiently and discreetly send and receive messages to and from subscribers or dispatch operators.

UNIFIED CALL LIST – Consolidates all call lists underneath one unified list so you can easily access all information associated with a particular contact.

VOICE ANNOUNCEMENT – Allows you to navigate through channels/talk-groups and zones in the radio while an audible, pre-recorded voice file provides a description of the selected channel or zone.

P25 TDMA CAPABLE – Provides twice the voice capacity, so you can add more users to your system without the need for additional frequencies or infrastructure.

MULTIBAND OPERATION – Multiple frequency bands supported with best-in-class transceiver specifications and performance.

SEAMLESS SCAN – Seamless scanning of multiple protocols including FDMA and TDMA systems and multiple RF bands.

ENHANCED DATA – Utilizing TDMA technology, this feature offers greater capacity and reliability of the slotting mechanism where fewer collisions occur.

SITE SELECTABLE ALERT – Continuous tones sent to alert sites of mining detonation activity, evacuation of sites, or vehicle stops.

ADVANCED HARDWARE FEATURES

GPS LOCATION – Integrated GPS receiver can transmit the outdoor location of an individual or vehicle to map-based location software.

MISSION CRITICAL WIRELESS BLUETOOTH – A unique Bluetooth® solution that provides an encrypted link to high performance accessories and applications to support different mission critical environments. Supports commercial off the shelf (COTS) and personal area network (PAN) devices.

MAN DOWN – Unique accelerometer that senses the physical position of the user to communicate updated information to incident command/dispatch. Contains an audible bech with a unique critical emergency tone that will repeat itself until the emergency is manually deactivated.

RADIO AUTHENTICATION – Providing an extra, secure level of verification every time a radio registers onto a system.

FUTURE READY

MEMORY – Equipped with 64 MB of industrial grade internal memory and a removable memory MicroSD card slot. The removable memory card allows future expandability for growing technology needs.

PROGRAMMING OVER PROJECT 25 – Motorola's POP25 solution allows subscriber radios to be programmed over the air via the ASTRO 25 systems while remaining in the field without interruption.



ASTRO 25 TWO-WAY RADIO APPLICATIONS

Highlighting the most reliable and efficient application solution for ASTRO subscriber radio products to meet each customer's need.

APX™ P25 PERSONNEL ACCOUNTABILITY

Created and designed for fire safety personnel and battalion officers, APX P25 Personnel Accountability is an integrated solution that provides a cohesive report and improves responder safety. A NIMS compliant based solution, APX Accountability allows for better roll call integration, integrated graphical user interface (GUI) and Personnel Accountability Report (PAR) timers based on when agencies arrive on scene and when key events have occurred on scene.

USER-FRIENDLY GUI

Partnering with Systems Definition Inc., we developed a new, streamlined GUI that integrates multiple tasks on a single screen. Now, incident commanders can manage all of their tasks – conducting roll call, monitoring PAR checks and issuing evacuation notifications – from the convenience of one user-friendly screen.

ROLL CALL ALERT

With advanced features such as roll-call accountability, you no longer have to acknowledge your status with a voice-based response. Simply open the roll call window from the laptop at incident command to initiate an accountability roll call. Each responder acknowledges the Incident Commander's request for PAR from their APX series portable radios; they simply press the PTT button to acknowledge. Incident command receives confirmation of who has acknowledged the roll call and a count of those yet to respond. As a result, they not only have better accountability of personnel but the solution significantly reduces cycle time on PAR checks throughout the incident.

MAN DOWN ALERT

An optional, automatic Man Down alert on APX series P25 portable two-way radios adds another valuable level of safety. The on-board accelerometer in the radio monitors an individual's movement and orientation. If a responder is motionless or in a horizontal position for a predetermined amount of time, the APX portable radio will automatically transmit an emergency alert, notifying incident command that the responder is in distress.



APX™ RADIO MANAGEMENT

The APX CPS Management application can program up to 16 radios at one time and track which radios have been successfully programmed, providing a clear view of the entire radio fleet and a codeplug history for each radio.

ACCESS AND SHARE CODEPLUGS

When codeplug updates occur, the radio codeplug database can be stored on a network server allowing remote programmers to access and program radios and share a codeplug template across multiple radios. Changes to codeplug templates can be automatically applied to all affected radios while radio programming jobs can be scheduled ahead of time giving you more flexibility and operational efficiency.

MINIMIZE DOWNTIME

Save time and fuel by programming radios either via a USB port on a local or remote PC, or with Over-the-Air-Programming (OTAP) on a Project 25 system. With USB programming, a Device Programmer application resides on a PC and you can connect up to 16 radios via a USB hub to expedite the programming. To read/write multiple radios through a single computer or USB hub, the radios must be programmed with a unique IP address the first time they are read/written.

No application knowledge or application interaction is necessary by the user to program a radio with the Device Programmer application. The user simply plugs the radio into a USB port and the application automatically reads and writes the updates from the server to the radio.

Radio Management batch programming of APX radios via OTAP can only occur with a Motorola ASTRO® 25 Project 25 system, which has voice priority over data, so a user's call, emergency notifications or critical communications will not be interrupted with OTAP. Should an OTAP session be interrupted with communications, programming will resume after the call without the need to restart, expediting the process.

APX™ BATTERY MANAGEMENT

A radio is only as good as the battery that powers it. So when a battery fails and communication is lost, it impacts every aspect of your organization from serving customers to saving lives. But monitoring and maintaining the status of a large fleet of batteries can be time-consuming, inefficient and potentially overwhelming.

That's why we created our proprietary IMPRES™ Battery Management technology. It saves you the guesswork, complexity and costs of managing hundreds even thousands of radio batteries and chargers wherever they're located, and make it easier for your employees to do their work safely and successfully.

HOW DOES IT WORK?

Our IMPRES Battery Management software automatically collects critical data from IMPRES batteries when they are inserted into an IMPRES charger including battery age, capacity, charge and recondition history, the dates manufactured and put into service. This software analyzes battery data and tells you how "healthy" a battery is and when it needs to be changed, so you can quickly and efficiently determine when to remove a poor-performing battery, purchase a new one or redeploy it to less demanding, users, and even identify missing batteries.

VIEW CURRENT REPORTS OR CREATE CUSTOM ONES

Use existing reports or customize new ones to see the most relevant information for your organization. Data is stored in your database and can be exported to an Excel file or printed. IMPRES Battery Management software records and organizes a variety of data so you can:

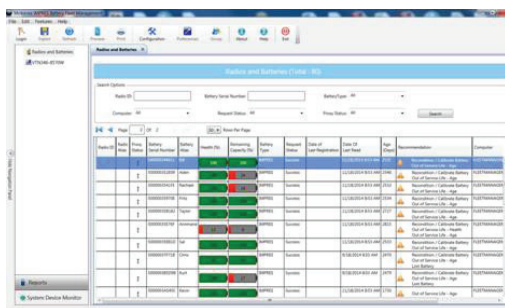
- See a status snapshot of your entire battery fleet
- Evaluate whether batteries are meeting your performance criteria
- Determine when batteries are nearing their end-of-life
- Decide exactly when to buy new batteries
- Get a lost battery report
- Optimize your charger utilization
- Monitor all devices in the system

IMPRES BATTERY MANAGEMENT DELIVERS BATTERY-CRITICAL INFORMATION

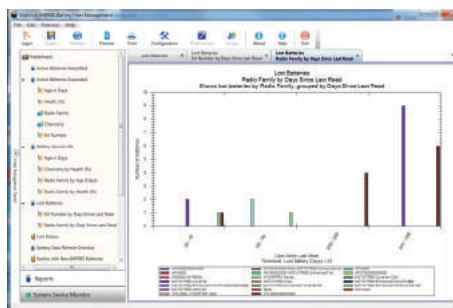
- Tells you when batteries are below an acceptable capacity
- Helps ensure users have enough capacity for a full work shift
- Alerts you to low capacity batteries so you can remove them
- Eliminates unexpected downtime and work interruptions
- Avoids the expense of throwing batteries away prematurely
- Confirms chargers are optimally distributed and used

EACH SOFTWARE LICENSE SUPPORTS:

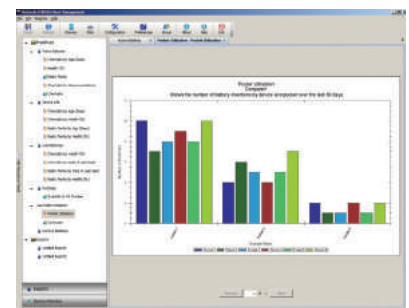
- 1 System Administrator Server
- 19 Remote Clients
- 25 IMPRES Chargers or IMPRES Battery Readers per client
- 25,000 IMPRES Batteries (the total number of batteries for the entire system cannot exceed 25,000)



Active battery report



Lost battery by location



Charger pocket utilization



DIGITAL VEHICULAR REPEATER SYSTEM (DVRS)

Digital Vehicular Repeater Systems (DVRS) from Futurecom is a radio system component that provides repeater capability between portable subscribers and RF base station infrastructure, extending radio coverage of your network.

Installed in the trunk of a car, fire truck, or other vehicles, the DVRS extends your ASTRO 25 network when portable users are outside of your vehicle, inside of a building or in any marginal coverage area. The DVRS also supports fixed mounting and is transportable.



FEATURES AND BENEFITS

- Flexible Coverage
- In-Band/Cross-Band
- Intelligent Activation
- End-to-End Encryption
- Portable ID Pass-Through
- Flash Upgradable
- Power Output 1-10W
- Compatible with XTL 5000, XLT 2500, APX 7500 and APX 6500 Remote Mount
- P25 Digital/Analog Operation
- Available in VHF, UHF, 700 MHz and 800 MHz



All specifications subject to change without notice. Motorola Solutions, Inc. 1301 E. Algonquin Road, Schaumburg, Illinois 60196 U.S.A. motorolasolutions.com

MOTOROLA, MOTO, MOTOROLA SOLUTIONS and the Stylized M Logo are trademarks or registered trademarks of Motorola Trademark Holdings, LLC and are used under license. All other trademarks are the property of their respective owners. © 2014 Motorola Solutions, Inc. All rights reserved. RC-26-5000C

