



MOTOTRBO™

TWO-WAY RADIO SYSTEMS AT A GLANCE



**BE SAFER,
MORE EFFICIENT AND
MORE PRODUCTIVE
WITH THE POWERFUL DIGITAL
PERFORMANCE AND ADVANCED
CAPABILITIES OF MOTOTRBO.**



DISCOVER WHAT MOTOTRBO CAN DO THROUGHOUT YOUR ENTERPRISE

Two-way radios are the go-to technology for enterprises around the world – connecting people wherever they need clear, instant and reliable communications. MOTOTRBO offers a portfolio of analog and digital two-way radios that enable voice and data communications. It combines the best of two-way radio functionality with the latest digital technology for instant communicating, easy decision-making and seamless coordinating.

MOTOTRBO brings all the benefits of push-to-talk communications in an incredibly powerful tool that takes productivity, efficiency and safety to a whole new level. MOTOTRBO is truly the next generation of business communications.



HEAR AND BE HEARD CLEARLY IN NOISY ENVIRONMENTS

Superb audio quality on MOTOTRBO ensures crystal-clear communications. The Intelligent Audio feature (on certain models) automatically adjusts radio volume up and down in response to the level of noise in the workplace. And with MOTOTRBO's background noise suppression, you can be confident communication is loud and clear.

REACH YOUR WORKFORCE WHEREVER THEY GO

Hear calls clearly over a greater range. MOTOTRBO digital voice delivers voice integrity and clarity to the limits of coverage plus twice the capacity of analog radios. Many more workers can use voice and data, without worrying about privacy or interference.

KEEP COMMUNICATING FOR LONGER

Because MOTOTRBO radios use much less power in digital mode than analog, batteries last significantly longer on a single charge.

CHOOSE THE RIGHT SOLUTIONS FOR THE RIGHT USERS

Whether you want ultra-light portables or extra-tough mobiles, integrated Bluetooth® or industry-leading data applications, MOTOTRBO has the right devices and systems to fit your workforce now, and allow you to evolve as your enterprise grows.

MOVE FROM ANALOG TO DIGITAL WITH EASE

Migrate at your own pace, one talk group or department at a time. MOTOTRBO radios operate in analog and digital mode, so you can use them on your existing analog system and move to digital when you're ready – all while running operations smoothly.

GET ADVANCED CAPABILITIES AND BUSINESS-CRITICAL FEATURES

MOTOTRBO has innovative features such as Transmit Interrupt, which lets you prioritize communication the moment it's needed. Man Down and Lone Worker applications call for help when personnel can't. GPS location tracking monitors vehicles, assets and the user in real time.

LEVERAGE EXPERT APPLICATIONS THAT GET THE JOB DONE EFFICIENTLY

MOTOTRBO fits the way businesses run today, with an expert application developer program that helps you customize your communication solution to your environment and workforce. Solutions range from text messaging and GPS tracking to personnel accountability and work order ticket management. Applications like these make it easier to accomplish multiple tasks on a single device.

KEEP CONNECTED WHEN CONDITIONS ARE TOUGHEST

MOTOTRBO is made to last. Our rugged, waterproof and intrinsically safe radios endure a rigorous Accelerated Life Testing (ALT) program which simulates up to 5 years of field use. We design and engineer MOTOTRBO products to survive the harsh conditions of everyday business.



PORTABLE AND MOBILE RADIOS

The MOTOTRBO two-way radio portfolio offers you a wide choice of devices, from simple voice-only models to feature-rich voice and data radios. All work together seamlessly to deliver advanced features to enhance your safety, productivity and efficiency. With exceptional voice quality and outstanding usability, MOTOTRBO keeps your workforce connected.



SL 7000 SERIES

SLEEK AND SMART FOR THE BUSINESS LEADER WHO MUST LOOK PROFESSIONAL

Stay connected and in control with the incredibly thin, light portable that is the ultimate in discreet communications. Versatile and powerful, the SL Series weighs as little as an average smartphone. Its slim design and forward-thinking features such as Intelligent Audio, integrated Bluetooth and covert mode enhance your professionalism and responsiveness.

COMPATIBLE WITH: IP SITE CONNECT CAPACITY PLUS LINKED CAPACITY PLUS CONNECT PLUS



XPR 7000 SERIES

A COMMUNICATIONS POWERHOUSE FOR DEMANDING USERS

Experience voice and data communications like never before. The XPR 7000 Series offers a full set of features and rich functionality in one powerful device. It delivers superb audio quality, full color display, integrated Bluetooth for audio and data, enhanced GPS, text messaging and expert applications customized to your business. HazLoc versions are available for use in flammable or explosive atmospheres.

COMPATIBLE WITH: IP SITE CONNECT CAPACITY PLUS LINKED CAPACITY PLUS CONNECT PLUS



XPR 6000 SERIES

DIGITAL WORKHORSE FOR THE ADVANCED USER WHO MUST HAVE A PROVEN SOLUTION

Rely on the proven performance of the original DMR portables. The XPR 6000 Series features superior audio, optional Bluetooth for audio, integrated GPS, text messaging and expert applications customized to your business. HazLoc versions are available for use in flammable or explosive atmospheres.

COMPATIBLE WITH: IP SITE CONNECT CAPACITY PLUS LINKED CAPACITY PLUS CONNECT PLUS



XPR 3000 SERIES

AFFORDABLE VOICE COMMUNICATIONS FOR THE BUSY PROFESSIONAL

Get superb audio in a scalable portable that lets you migrate to digital at your own pace. The XPR 3000 Series features Intelligent Audio and voice announcement for easy communication in challenging environments. With analog and digital capabilities and the ability to expand features with a simple software upgrade, you can transition to digital when you're ready.

COMPATIBLE WITH: IP SITE CONNECT CAPACITY PLUS LINKED CAPACITY PLUS CONNECT PLUS



SL300

ULTRA-PORTABILITY FOR THE USER WHO NEEDS EASY CONNECTIVITY

Discover freedom with this slim, lightweight radio, where advanced technology brings high performance with intuitive operation. For example, the eye-catching Active View display (optional) combines ruggedness and simplicity with long battery life. A versatile range of carry options allow you to stay connected and free to focus on the job at hand.

COMPATIBLE WITH: IP SITE CONNECT CAPACITY PLUS LINKED CAPACITY PLUS CONNECT PLUS



CP200d

SIMPLE VOICE COMMUNICATIONS FOR THE EVERYDAY USER WHO WANTS TO STAY CONNECTED

Connect your workforce efficiently and affordably and make the move to digital as your business grows. The CP200d two-way analog/digital radio provides great voice communication now, with the option to enable digital voice when you're ready. It features superior audio quality, outstanding coverage and long battery life.

COMPATIBLE WITH: IP SITE CONNECT CAPACITY PLUS LINKED CAPACITY PLUS CONNECT PLUS



XPR 5000 SERIES

A COMMUNICATIONS POWERHOUSE FOR DEMANDING USERS

Work smarter and safer with this high-performing digital mobile. The XPR 5000 Series offers a full set of features and rich functionality in one powerful device. It delivers superb audio quality, optional full color display, integrated Bluetooth for audio and data, enhanced GPS, text messaging and expert applications customized to your business.

COMPATIBLE WITH: IP SITE CONNECT CAPACITY PLUS LINKED CAPACITY PLUS CONNECT PLUS



XPR 4000 SERIES

DIGITAL WORKHORSE FOR THE ADVANCED USER WHO MUST HAVE A PROVEN SOLUTION

Keep crews in touch with these proven digital performers. The XPR 4000 Series features superb audio, integrated GPS, text messaging and expert applications customized to your business.

COMPATIBLE WITH: IP SITE CONNECT CAPACITY PLUS LINKED CAPACITY PLUS CONNECT PLUS



XPR 2500

AFFORDABLE VOICE COMMUNICATIONS FOR THE BUSY PROFESSIONAL

The power of digital is within reach. The XPR 2500 features voice systems capability, twice the calling capacity and clearer voice communications. With Intelligent Audio, drivers don't need to adjust radio volume to avoid missing a call: the XPR 2500 monitors background noise and automatically adjusts itself.

COMPATIBLE WITH: IP SITE CONNECT CAPACITY PLUS LINKED CAPACITY PLUS CONNECT PLUS



CM200d, CM300d

SIMPLE VOICE COMMUNICATIONS FOR THE EVERYDAY USER WHO WANTS TO STAY CONNECTED

Make sure your drivers communicate without distraction. The CM200d and CM300d are cost-effective solutions that can be used by commercial motor vehicle (CMV) drivers easily and safely while they are operating their vehicles. They offer all the benefits of digital plus business-critical features, such as transmit-interrupt (decode only) to prioritize critical communication.

COMPATIBLE WITH: IP SITE CONNECT CAPACITY PLUS LINKED CAPACITY PLUS CONNECT PLUS



CSA PORTABLE RADIOS (CANADA ONLY)

SPECIALIZED PRODUCTS FOR HAZARDOUS AREAS

The XPR 6580 I.S. and XPR 7550 I.S. are certified intrinsically to Canada's CSA standard. They have a comprehensive feature set, and are color-coded for easy identification. The radios are available with a dedicated portfolio of CSA-rated accessories.

SYSTEMS

No matter how large or small your enterprise, MOTOTRBO offers a wide range of systems specifically designed for your business – for the days ahead and the years beyond. You get the best of two-way radio with digital technology and enjoy integrated voice and data communication, increased capacity, enhanced features and exceptional voice quality, across the city and around the globe.



CONVENTIONAL

BASELINE SINGLE SITE COVERAGE AND CAPACITY

A conventional system is a step up from basic radio-to-radio communications. Radios communicate via a high-power repeater, giving better coverage and more centralized control.



IP SITE CONNECT

COST-EFFECTIVE COVERAGE FOR MULTIPLE SITES

Use your IP network to extend the voice and data capabilities of MOTOTRBO by linking repeaters together. You can create a continuous network that covers employees at 15 geographically-dispersed locations. You can also link up to 15 repeaters to create wide area coverage or enhance coverage at a single site that has physical barriers.



CAPACITY PLUS

COST-EFFECTIVE CAPACITY FOR A SINGLE SITE

Opt for this single site, digital, entry-level trunking system that maximizes the capacity of MOTOTRBO by connecting several repeaters together. You can use it for a high volume of voice and data communication and link over a thousand users at a single site without.



LINKED CAPACITY PLUS

COVERAGE AND CAPACITY FOR MULTIPLE SITES

Expand the capacity and extend the coverage of MOTOTRBO with this multi-site, digital, entry-level trunking system. It leverages the high capacity of Capacity Plus with the wide area coverage capabilities of IP Site Connect to keep employees at many locations affordably connected.



CONNECT PLUS

MULTI-SITE COVERAGE, CAPACITY AND CONTROL

Unify your entire enterprise with this scalable, multi-site digital trunking system that coordinates resources using a dedicated control channel. Calls can be queued during busy times until an open channel is available, important users can be assigned priority status and a wireline console can be used for centralized dispatch.

INFRASTRUCTURE

Repeaters, controllers and gateways are the backbone of your MOTOTRBO two-way radio system. They ensure your radio network is available at all times and that communications are clear, reliable and secure across your enterprise.



XPR 8000 SERIES REPEATERS

Maximize the performance of your MOTOTRBO system with the 40 Watt XPR 8000 Series repeaters. They utilize dynamic mixed mode capability to ease migration by automatically switching between analog and digital mode. The XPR 8000 Series supports two simultaneous voice or data paths in digital mode, doubling capacity without adding new frequencies.



MTR3000 HIGH POWER REPEATER

Extend coverage and capacity easily with the MTR 3000. This 100 Watt continuous duty base station/repeater operates in digital mode in MOTOTRBO Conventional, IP Site Connect, Capacity Plus, Linked Capacity Plus and Connect Plus systems. The MTR3000 can also operate in analog mode for conventional systems.



CONNECT PLUS XRC 9100 CONTROLLER

Deliver greater coverage and information to mobile teams. The XRC 9100 supports single and multi-site Connect Plus systems. Queue calls during busy times until an open channel is available and assign important users priority status when the system is in high demand. The XRC 9100 represents an evolution of the original XRC 9000 MOTOTRBO Connect Plus Controller, and is fully interoperable with new and existing systems.



CONNECT PLUS XRT 9100 GATEWAY

Reach your large workforce efficiently. The XRT 9000 links Connect Plus with an IP-based wire-line console for centralized dispatch. The XRT 9100 represents an evolution of the original XRT 9000 MOTOTRBO Connect Plus Gateway, and is fully interoperable with new and existing systems.



CONNECT PLUS XRI 9100 INTERCONNECT GATEWAY

With the MOTOTRBO Connect Plus Telephone Interconnect feature, you can connect your staff to people inside and outside your business, on their fixed or cellular phones. Handle customer queries direct, and manage inter-company transactions seamlessly. The MOTOTRBO Connect Plus XRI 9100 Interconnect Gateway improves your efficiency and responsiveness.



MOTOTRBO ANYWHERE SERVER

Get robust and secure management of your client accounts. The MOTOTRBO Anywhere Server provides the interface between public cellular networks and the MOTOTRBO radio network for secure centralized provisioning, flexible client management, call history, upgrades and diagnostics.

CONSOLES & SYSTEM MANAGEMENT

With options designed for your business, this portfolio of dispatch consoles and system management applications have the features you need to make quick decisions, mobilize a fleet and keep teams informed.



MIP 5000

A flexible and affordable VoIP radio console solution to transmit dispatch-quality voice over an existing multicast-enabled Ethernet network. With the ability to connect up to 100 remote users and flexible licensing with 1, 4, 8, 12 and 24 channel software options, the MIP 5000 VoIP Radio Console is designed to meet your requirements. You can connect up to 128 radio resources to the network and configure them in the Console System Database Manager (CSDM). You can also save configuration files on each operator position to allow a dispatcher to access and control different combinations of radio resources (up to 24 at a time). The console system consists of two parts – a graphical user interface (GUI) and a radio gateway or gateways.



 SOLD AND SUPPORTED

AVTEC SCOUT

Scout is a true VoIP console system: all its components may be distributed over a LAN/WAN using standard Ethernet connections. The system uses a wireline interface to connect with MOTOTRBO systems, for increased functionality, call capacity and system reliability.

Scout provides a dedicated media workstation. This allows customers to operate on standard hardware for reduced costs. Radio, Telephony, and I/O integration are supported.



 SOLD AND SUPPORTED

GENESIS GW3-TRBO

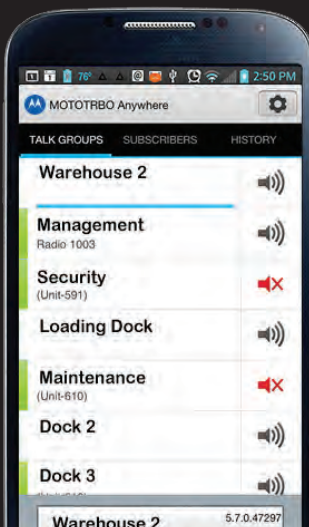
GW3-TRBO® represents the ultimate in system management for MOTOTRBO. With GW3-TRBO, you have an easy way to generate detailed metrics of your MOTOTRBO system performance.

GW3-TRBO connects directly to the MOTOTRBO system through a wireline interface. It captures usage information for every site, channel, slot, talkgroup and subscriber.

 SOLD AND SUPPORTED

Products bearing the "Motorola Solutions Sold and Supported" logo are premium products developed by Motorola Solutions partners to fulfill critical functions in MOTOTRBO™ systems. These products are tested and integrated in direct cooperation with Motorola. They are sold through Motorola Channel Partners and supported through Motorola's customer service teams.

SYSTEM APPLICATIONS



MOTOTRBO ANYWHERE

Connect without limits. MOTOTRBO Anywhere is a solution that allows you to communicate with MOTOTRBO users and talkgroups with an Android or iOS application on your mobile device. MOTOTRBO Anywhere utilizes a gateway on the MOTOTRBO Connect Plus system to deliver radio-like features over an IP network. Large numbers of talkgroups can be accommodated, and every external user can be configured with a unique profile as necessary. The smartphone application is available for iOS devices through iTunes and for Android devices through the Google Play Store. User licenses are required.



MOTOTRBO APPLICATIONS

With a wide range of applications and an expert application partners program, MOTOTRBO offers custom solutions that truly meet your business needs. Business-specific applications like these increase the level of efficiency, safety and productivity throughout your enterprise.



ALARM MANAGEMENT

Be alerted and respond rapidly with tracking applications that can monitor and remotely operate doors, gates, lights, sprinklers and more.



FLEET MANAGEMENT

Use GPS location tracking to monitor vehicles and manage logistics. Determine the speed and location of vehicles and monitor driving characteristics, fuel consumption and ignition status.



INTEROPERABILITY SOLUTIONS

Interoperate seamlessly and efficiently with other radio systems, telephony systems and mobile computing devices. Patch private calls, group calls and All Calls.



PERSONNEL TRACKING

Collect field data such as meter readings, school bus time and attendance and hospitality supply requests. Enhance workforce safety with lone worker and man-down emergency alarms.



SYSTEM MONITORING

Stay in control of your communication system, with applications that track performance by site, channel, slot and talkgroup. Send automatic alerts to system administrators, and generate reports for long term trend analysis.



TEXT MESSAGING AND EMAIL

Quickly and easily share information when voice communication isn't practical. Send messages or directions that don't need an immediate response, or when voice calls are disrupting to employees in the field or on the road.



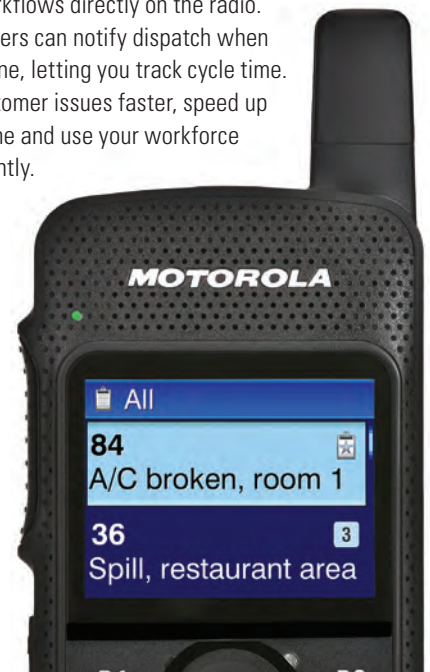
VOICE DISPATCH

Control your mobile workforce from a centralized location. Dispatchers can be notified each time a radio is turned on and display a comprehensive view of who is available and who is not. GPS coordinates allow the dispatcher to immediately see where the user is on a map.



WORK ORDER MANAGEMENT

Manage workflows directly on the radio. Mobile workers can notify dispatch when the job is done, letting you track cycle time. Resolve customer issues faster, speed up response time and use your workforce more efficiently.





ACCESSORIES

From discreet earpieces to efficient battery solutions, our complete portfolio of accessories optimize the performance of your MOTOTRBO radio. They are designed to help you perform your best, wherever you work, and unleash the power of the industry's most advanced digital radio platform.



EARPIECES

Transmit and receive discreetly with a variety of earpieces that feature a streamlined design and rugged cables that withstand tough conditions. With inline push-to-talk and microphones, they're easy to use on the go. Our flexible array of surveillance kits includes two-wire kits (one wire for receiving, one wire for transmitting) and more discreet three-wire kits (separate wires for transmitting, receiving and push-to-talk).



HEADSETS

Protect hearing and facilitate communications in noisy environments. Select from a wide range of comfortable, durable, lightweight to heavyweight headsets with noise-cancelling boom microphones and in-line push-to-talk. Temple transducer headsets rest on your temple to convert audio into sound vibration and transmit it to your inner ear. You hear your radio and sounds in the surrounding environment; since the transducer sits in front of your ears, you can also wear earplugs.



BLUETOOTH® WIRELESS FOR PORTABLE AND MOBILE RADIOS

Unleash the power of your MOTOTRBO radio without wires getting in the way. Our extensive suite of Bluetooth accessories free you to take the radio off your belt, leave your truck or step away from your desk (up to 30 feet away) and stay connected. Choose from covert earpieces, heavy duty wireless headsets and Operations Critical Wireless solutions that let you move without constraints around the workplace.



BATTERIES AND CHARGERS

MOTOTRBO batteries are developed, tested and certified for optimal performance with your MOTOTRBO radios and they outperform other brands of batteries. Reduce the number of spare batteries you buy with IMPRES™ batteries. IMPRES batteries can be charged 150 additional times versus a standard battery – a 43% increase in charge cycles. Choose from single-unit, multi-unit, travel and in-vehicle chargers and be confident your radio is ready when you need it. Get the most out of every battery and eliminate the surprise of “low battery alerts” with IMPRES chargers.



REMOTE SPEAKER MICROPHONES

Communicate clearly in loud workplaces. Remote speaker microphones (RSM) have exclusive audio features for windy outdoor environments (windporting) and noisy environments (noise-canceling). IMPRES audio ensures your voice is heard clearer and louder regardless of how you speak into the accessory. The INC RSM suppresses extreme noise (high decibel equipment, heavy machinery) so you can be heard above all.



MOBILE RADIO MICROPHONES

Choose microphones designed to keep workers safely connected on the move. Keypad microphones let you easily navigate menus on your radios, dial phone numbers and send text messages. The heavy-duty microphone is easy to use while wearing gloves, and the telephone-style handset is ideal for discreet communication.



CARRY SOLUTIONS

Carrying cases are available in sizes designed to fit your radio and battery and permit audio to be heard clearly. Our carry accessories keep your hands free, so you can concentrate on the task at hand. Choose from a wide range of nylon cases, leather cases, straps, holsters and clips, all designed to keep your radio protected, yet still easy to access.



INSTALLATION AND MOUNTING KITS

Mount your radio on a desk or in your vehicle without compromising safety. Mounting kits give you the flexibility to mount the radio, under or in your dashboard, between seats or on the floor. Remote mount kits allow you to mount the radio in the truck when dash space is limited.



SERVICES

Ensure and maintain the robust performance of your MOTOTRBO radios with a complete suite of services. We've got you covered, from pre-installation to post-implementation, with expert support to make sure your business runs without interruption, disruption or unplanned downtime.



SERVICE FROM THE START (SFS)

This multi-year repair program offers you a choice of normal wear and tear coverage or comprehensive coverage. No matter what happens to your MOTOTRBO device, you're covered.



PROGRAMMING SERVICES

These on-site or remote consultative technical support services optimize the operational efficiency of MOTOTRBO. They are ideal for programming and configuring MOTOTRBO systems and devices at the time of installation.



RF COVERAGE MAPPING SERVICE

These informational RF coverage maps increase the efficiency of the MOTOTRBO system during the design and deployment phase.



SITE INTEGRATION SERVICE

This on-site or remote consultative technical support service is ideal for integrating MOTOTRBO systems into your existing infrastructure. It reduces time during system deployment.



INFRASTRUCTURE REPAIR/ INFRASTRUCTURE REPAIR WITH ADVANCED REPLACEMENT

This service provides expert repair of MOTOTRBO Controller (XRC) and Gateway (XRT) devices. As an option, you can receive a next-business-day replacement unit to minimize system downtime.



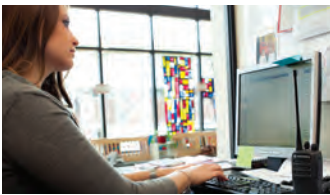
IP NETWORKING

This on-site or remote consultative technical support service maximizes your system's uptime. It validates and optimizes the IP network and site connectivity of your MOTOTRBO system during integration.



FLEET MANAGEMENT

To help you manage your radios and your staff more efficiently, MOTOTRBO offers tools and applications for fleet management.



CUSTOMER PROGRAMMING SOFTWARE

The MOTOTRBO Customer Programming Software (CPS) provides complete access to the configuration of your radio. Update firmware, enable features, change talkgroups, add language packs and upload voice announcements to your radio from your desktop.



RADIO MANAGEMENT

As an add-on to the CPS software, Radio Management gives you the capability to program radios in batches to standardized templates. Reduce errors, organize large fleets more efficiently, and streamline large-scale updates.



OVER-THE-AIR PROGRAMMING

Over-the-Air Programming (OTAP) allows you to update radios remotely, using the data capabilities of your MOTOTRBO system. Updates can be scheduled to minimize disruption to your business-critical communications.



RFID FLEET MANAGEMENT

Install RFID tag-equipped volume knobs on your portable radios, for easy inventory management of your radios. You can use an RFID reader to check radios in and out quickly and efficiently, or to increase staff accountability.



IMPRES BATTERY MANAGEMENT

When a business relies on constant communications, you can't afford to have unreliable batteries. IMPRES battery management allows you to see at a glance the health of your batteries, so you know exactly how much charge they are holding, and when they need replacement.



FLEET MANAGEMENT APPLICATIONS

The MOTOTRBO Application Development Program offers select third party applications to help you manage your fleet. Use GPS location tracking to monitor vehicles and manage logistics. Determine the speed and location of vehicles and monitor driving characteristics, fuel consumption and ignition status.

MOTOTRBO PORTABLE RADIO FEATURES

| FEATURE | DESCRIPTION | XPR 3000 SERIES | | XPR 6000 SERIES | | | | | | XPR 7000 SERIES | | | | | SL SERIES | | | | |
|---------------------------------|-----------------------------------------------------------------|-----------------|----------|-----------------|----------|----------|----------|----------|----------|-----------------|-------------|----------|----------|----------|-----------|-------------|---------|---------|---------|
| | | SL300 | CP200d | XPR 3300 | XPR 3500 | XPR 6100 | XPR 6350 | XPR 6380 | XPR 6550 | XPR 6580 | XPR 6580 IS | XPR 7350 | XPR 7380 | XPR 7550 | XPR 7580 | XPR 7550 IS | SL 7550 | SL 7580 | SL 7590 |
| FREQUENCY BAND | Capable of operation in the following bands | UHF, VHF | UHF, VHF | UHF, VHF | UHF, VHF | UHF, VHF | UHF, VHF | 800, 900 | UHF, VHF | 800, 900 | 800, 900 | UHF, VHF | 800, 900 | UHF, VHF | 800, 900 | UHF, VHF | UHF | 800 | 900 |
| CHANNELS | Programmable channel capacity | 2, 99 | 16 | 16 | 128 | 32 | 32 | 32 | 1000 | 1000 | 1000 | 32 | 32 | 1000 | 1000 | 1000 | 1000 | 1000 | 1000 |
| IP RATING | Rated sealing for dust and water ingression | IP54 | IP54 | IP55 | IP55 | IP54 | IP57 | IP57 | IP57 | IP57 | IP67 | IP57 | IP57 | IP57 | IP57 | IP67 | IP54 | IP54 | IP54 |
| DIGITAL | DMR standard digital voice communications | • | ○ | • | • | • | • | • | • | • | • | • | • | • | • | • | • | • | • |
| ANALOG | Analog voice communications | • | • | • | • | • | • | • | • | • | • | • | • | • | • | • | | | |
| BASIC PRIVACY | Basic protection against casual eavesdropping | • | • | • | • | • | • | • | • | • | • | • | • | • | • | • | • | • | • |
| BLUETOOTH AUDIO | Wireless connection for earpieces and headsets | | | | | ○ | ○ | ○ | ○ | ○ | ○ | • | • | • | • | • | • | • | • |
| BLUETOOTH DATA | Wireless connection for data communications | | | | | | | | | | | ○ | ○ | ○ | ○ | ○ | ○ | ○ | ○ |
| DISPLAY | Visual readout of radio functions | ○ | | | • | | | | • | • | • | | | • | • | • | • | • | • |
| EMERGENCY CALL | Radio can initiate Digital Emergency process | • | | • | • | | • | • | • | • | • | • | • | • | • | • | • | • | • |
| ENHANCED PRIVACY | Encryption of voice traffic using ARC4 with 40bit keys | | | ○ | ○ | | • | • | • | • | • | • | • | • | • | • | • | • | • |
| GPS | Embedded GPS receiver for location monitoring | | | | | | • | • | • | • | • | • | • | • | • | • | • | • | • |
| INTELLIGENT AUDIO | Automatic volume control based on background noise levels | | | • | • | | | | | | | • | • | • | • | • | • | • | • |
| INTRINSICALLY SAFE | Radio can be operated in flammable atmosphere | | | | | | ○ | ○ | ○ | ○ | • | ○ | ○ | ○ | ○ | • | | | |
| KEYPAD | Full (F) or limited (L) keypad for control and data entry | | | | L | | | F | F | F | | | F | F | F | F | F | F | F |
| LONE WORKER | Initiates emergency if user does not respond to periodic alerts | • | | • | • | | • | • | • | • | • | • | • | • | • | • | • | • | • |
| MAN DOWN | Initiates emergency based on radio orientation or movement | | | | | | ○ | ○ | ○ | ○ | ○ | ○ | ○ | ○ | ○ | ○ | | | |
| OTAP | Radio can be programmed Over-The-Air | | | • | • | | | | | | | • | • | • | • | • | • | • | • |
| RADIO DISABLE/ENABLE | Radio can remotely disable and/or re-enable another radio | | | | | | | | • | • | • | | | • | • | • | • | • | • |
| REMOTE MONITOR | Radio can remotely activate another radio's microphone | | | | • | | | | • | • | • | | | • | • | • | • | • | • |
| TEXT MESSAGING | Radio can send and/or receive text messages | | | | | | • | • | • | • | • | • | • | • | • | • | • | • | • |
| THIRD PARTY APPLICATIONS | Radio can use data to support third party application | | | | | | • | • | • | • | • | • | • | • | • | • | • | • | • |
| TRANSMIT INTERRUPT | Radio can force another radio to stop transmitting | | | ○ | ○ | | • | • | • | • | • | • | • | • | • | • | • | • | • |
| VIBRATE | Silent alert of incoming calls and texts | | | | | | | | | | | | | | | | • | • | • |
| VOICE ANNOUNCEMENT | Audible confirmation of selected operations of the radio | • | • | • | • | | | | | | | • | • | • | • | • | • | • | • |
| TALKAROUND | Radio is capable of direct radio-to-radio operation | • | • | • | • | • | • | • | • | • | • | • | • | • | • | • | • | • | • |
| CONVENTIONAL | Radio is compatible with basic repeater system | • | • | • | • | • | • | • | • | • | • | • | • | • | • | • | • | • | • |
| IP SITE CONNECT | Radio is compatible with IP Site Connect systems | | | ○ | ○ | | • | • | • | • | • | • | • | • | • | • | • | • | • |
| CAPACITY PLUS | Radio is compatible with Capacity Plus systems | | | ○ | ○ | | • | • | • | • | • | • | • | • | • | • | • | • | • |
| LINKED CAPACITY PLUS | Radio is compatible with Linked Capacity Plus systems | | | ○ | ○ | | • | • | • | • | • | • | • | • | • | • | • | • | • |
| CONNECT PLUS | Radio is compatible with Connect Plus trunked systems | | | | | | • | • | • | • | • | • | • | • | • | • | • | • | • |

○ OPTIONAL (Extra Cost) • STANDARD



MOTOTRBO MOBILE RADIO FEATURES

| FEATURE | DESCRIPTION | CM SERIES | | XPR 4000 SERIES | | | | XPR 5000 SERIES | | |
|----------------------------------|-----------------------------------------------------------------|-----------|----------|-----------------|----------|----------|----------|-----------------|----------|----------|
| | | CM200d | CM300d | XPR 2500 | XPR 4350 | XPR 4380 | XPR 4550 | XPR 4580 | XPR 5350 | XPR 5550 |
| FREQUENCY BAND | Capable of operation in the following bands | VHF, UHF | VHF, UHF | VHF, UHF | VHF, UHF | 800, 900 | VHF, UHF | 800, 900 | VHF, UHF | VHF, UHF |
| CHANNELS | Programmable channel capacity | 16 | 99 | 128 | 32 | 32 | 1000 | 1000 | 32 | 1000 |
| IP RATING | Rated sealing for dust and water ingress | IP54 | IP54 | IP54 | IP54 | IP54 | IP54 | IP54 | IP54 | IP54 |
| DIGITAL | DMR standard digital voice communications | ○ | ○ | ● | ● | ● | ● | ● | ● | ● |
| ANALOG | Analog voice communications | ● | ● | ● | ● | ● | ● | ● | ● | ● |
| ALPHANUMERIC DISPLAY | Display for easy access to advanced features | | ● | ● | | | ● | ● | | ● |
| BASIC PRIVACY | Basic protection against casual eavesdropping | ● | ● | ● | ● | ● | ● | ● | ● | ● |
| BLUETOOTH AUDIO | Wireless connection for earpieces and headsets | | | | | | | | ● | ● |
| BLUETOOTH DATA | Wireless connection for data communications | | | | | | | | ○ | ○ |
| CONTROL STATION | Radio can be configured as a Dispatch or Control Station | ● | ● | ● | ● | ● | ● | ● | ● | ● |
| EMERGENCY CALL | Radio can initiate Digital Emergency process | | | ● | ● | ● | ● | ● | ● | ● |
| ENHANCED PRIVACY | Encryption of voice traffic using ARC4 with 40bit keys | | | ○ | ● | ● | ● | ● | ● | ● |
| GPS | Embedded GPS receiver for location monitoring | | | | ● | ● | ● | ● | ● | ● |
| INTELLIGENT AUDIO | Automatic volume control based on background noise levels | | | ● | | | | | ● | ● |
| LONE WORKER | Initiates emergency if user does not respond to periodic alerts | | | ● | ● | ● | ● | ● | ● | ● |
| NUMERIC DISPLAY | Clear display of channel number on front of radio | ● | | | ● | ● | | | ● | |
| OTAP | Radio can be programmed Over-The-Air | | | ● | | | | | ● | ● |
| RADIO DISABLE/ENABLE | Radio can remotely disable and/or re-enable another radio | | | ● | | | ● | ● | | ● |
| REMOTE MONITOR | Radio can remotely activate another radio's microphone | | | ● | | | ● | ● | | ● |
| REMOTE MOUNT CONTROL HEAD | Control head can be located separately from radio | | | | ○ | ○ | ○ | ○ | ○ | ○ |
| TEXT MESSAGING | Radio can send and/or receive text messages | | | | ● | ● | ● | ● | ● | ● |
| THIRD PARTY APPLICATIONS | Radio can use data to support third party application | | | | ● | ● | ● | ● | ● | ● |
| TRANSMIT INTERRUPT | Radio can force another radio to stop transmitting | | | ○ | ● | ● | ● | ● | ● | ● |
| VOICE ANNOUNCEMENT | Audible confirmation of selected operations of the radio | ● | ● | ● | | | | | ● | ● |
| TALKAROUND | Radio is capable of direct radio-to-radio operation | ● | ● | ● | ● | ● | ● | ● | ● | ● |
| CONVENTIONAL | Radio is compatible with basic repeater system | ● | ● | ● | ● | ● | ● | ● | ● | ● |
| IP SITE CONNECT | Radio is compatible with IP Site Connect system | | | ○ | ● | ● | ● | ● | ● | ● |
| CAPACITY PLUS | Radio is compatible with Capacity Plus systems | | | ○ | ● | ● | ● | ● | ● | ● |
| LINKED CAPACITY PLUS | Radio is compatible with Linked Capacity Plus systems | | | ○ | ● | ● | ● | ● | ● | ● |
| CONNECT PLUS | Radio is compatible with Connect Plus trunked systems | | | | ● | ● | ● | ● | ● | ● |

○ OPTIONAL (Extra Cost) ● STANDARD

BUSINESSES AROUND THE WORLD TRUST MOTOTRBO TO TRANSFORM THE WAY THEY WORK.

Today, from the production line to the power line, MOTOTRBO radios are helping people work more efficiently, productively and safely. MOTOTRBO delivers the game-changing advantages of digital technology – from superb audio to expansive coverage – along with business-essential systems, applications and accessories that unleash the power of the radio.

MOTOTRBO puts the right device into the hands of the right user, to empower your workforce and transform your enterprise.

To do more with digital throughout your enterprise, visit
www.motorolasolutions.com/mototrbo

Motorola Solutions, Inc. 1301 East Algonquin Road Schaumburg, Illinois 60196, U.S.A.
800-367-2346 motorolasolutions.com

MOTOROLA, MOTO, MOTOROLA SOLUTIONS and the Stylized M Logo are trademarks or registered trademarks of Motorola Trademark Holdings, LLC and are used under license. All other trademarks are the property of their respective owners. © 2014 Motorola Solutions, Inc. All rights reserved. RC-4-2036A

Version 2, 10/14