

# AIRDEFENSE SOLUTIONS



# SIMPLIFY THE MANAGEMENT OF WIRELESS INFRASTRUCTURE

WLAN INFRASTRUCTURE MANAGEMENT SOLUTION



# THE CHALLENGE: NETWORK COMPLEXITY

In most organizations, wireless networks tend to evolve, rather than arrive fully formed. One group proposed a mobile application that would help them be more productive. You added it. Your organization grew and your needs changed, so you found more opportunities to use wireless. You added those. Over time, you made the best choices in equipment and infrastructure for your current needs. Then you upgraded – and you expanded again.

Now you find yourself managing a complicated WLAN comprised of equipment from a number of different vendors, with a variety of architectures, supporting various 802.11 protocols, requiring several individual management consoles. Even if you once had the luxury of choosing everything from the same source, by now you likely have different product versions, mixing older and newer devices with non-uniform feature sets, firmware incompatibilities and different management interfaces. Your network administrators are rapidly becoming sub-specialists who manage individual devices rather than a whole network. Knowledge transfers are growing difficult, misconfigurations and compliance problems are multiplying, and the cost of your network operation keeps rising.

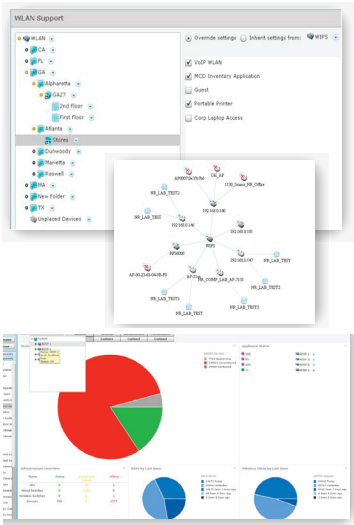
You don't need to change out your entire network infrastructure to solve the problems. You just need to change the way you manage it.

Motorola's AirDefense Infrastructure Management Solution gives you tools that manage the complexities of multi-vendor networks for you, automatically and behind the scenes. Using a single console and our straightforward, agnostic user interface, the AirDefense Infrastructure Management Solution offers centralized management and control for the wireless enterprise – multi-vendor, multi-architecture, multi-generation and multi-version.

You can now have one easy-to-use interface for your network environment. One streamlined approach to identifying problems and managing change. One unified, more efficient wireless operation. And one less distraction from your core business.



# THE SOLUTION: STREAMLINE YOUR MANAGEMENT APPROACH



Your wireless network is one-of-a-kind, planned and evolved to meet your organization's needs, but its complexity isn't unusual. The truth is that diverse, heterogeneous wireless LANs are common, as are the challenges that come with managing them to meet current and future needs.

The AirDefense Infrastructure Management Solution was developed to meet those challenges. It lets you take advantage of the many varied features and strengths of a wide range of available mobility technologies, without spending all your time and resources managing the variations instead of the capabilities.

The AirDefense Services Platform keeps track of the many differing technical requirements for your LAN's equipment – configuration settings, architectures, syntax – all the variables that make administration so complicated. What your administrators see is a single, consistent interface. So when they need to make a change, the processes are the same, no matter who made the underlying device, what version it is or what protocols it requires. Users can quickly define profiles for new or updated equipment and effortlessly apply them across the network hierarchy; the AirDefense Services Platform does all the complex work in the background. Your network administrators no longer need to be experts on every specific device and model you use across your network.

Instead of multiple systems for administration, the Infrastructure Management Solution gives you a centralized console from which you can manage device configurations and firmware, monitor device status, capture faults, audit and automatically correct device configuration issues, gather network statistics, or generate trend and compliance reports. The AirDefense Services Platform uses a patent-pending "plug-in architecture" that allows the system to rapidly add new models without changing the user interface or upgrading the system. The platform also supports a variety of back-end management protocols to incorporate multiple vendor platforms.

## WHAT OUR SOLUTION DELIVERS

The AirDefense Infrastructure Management Solution gives you:

- Complete WLAN network visibility within one central console
- Multi-vendor/heterogeneous environment WLAN infrastructure management, enabling simplified WLAN management at a lower total cost
- Simplified device configuration tools
- A cost-effective and manageable way to help your organization upgrade/migrate to 11n infrastructure

## WHAT IT MEANS TO YOU

AirDefense Infrastructure Management Solution gives your administrators and IT staff a single holistic view into your wireless network. So not only is daily operation less complex (and less costly), but large scale deployments are simpler. Security event monitoring is easier. Time needed to resolve wireless problems is shorter.

By managing configuration complexities behind the scenes, the solution enables your administrators to consistently apply needed changes – to improve security or ensure regulatory compliance, for example – across your entire network operation. Typically, global settings, such as user accounts and policies, are manually replicated across multiple appliances, a time-consuming and error-prone process. Our Infrastructure Management Solution can push configuration and policy changes automatically across multiple appliances throughout your enterprise, helping to ensure that your network stays secure, compliant and performing at its best.



# RUNNING A COMPLEX NETWORK IS NOW MUCH SIMPLER

To learn more about how your network operation can be more tightly aligned with your business strategy while your infrastructure investment delivers more value, please visit us at [www.motorola.com/wms](http://www.motorola.com/wms)

Part number GC-29-112. MOTOROLA, MOTO, MOTOROLA SOLUTIONS and the Stylized M Logo are trademarks or registered trademarks of Motorola Trademark Holdings, LLC and are used under license. All other trademarks are the property of their respective owners. © 2011 Motorola Solutions, Inc. All rights reserved.



## SYSTEM REQUIREMENTS FOR MOTOROLA SOFTWARE SOLUTIONS

An AirDefense server appliance is required to run the AirDefense Services Platform and all AirDefense modules. The server appliance is a true plug-and-play system with a hardened operating system, optimized database, and application software included.

Current model options include:

- Model 1252
- Model 3652
- Model 4250

Please see each Motorola AirDefense server appliance specification sheet for model specs.