



Accessory Programming Software (APS) User Guide

Contents

Introduction..... 3

APS Installation Requirements 3

APS Software Installation 4

Device Driver Installation..... 5

How to Configure Accessory 9

How to Upgrade Accessory Firmware 13

Introduction

Accessory Programming Software, or APS, is a utility that allows you to upgrade and/or configure your Motorola Solutions accessory product. Please read the instructions below before proceeding with the installation. Be sure to carefully read all on-screen instructions during the installation and use.

APS Installation Requirements

Accessory Programming Software requires one of the following operating systems:

- Windows XP SP3 32-bit
- Windows Vista 32-bit
- Windows 7

APS Software Installation

Note: The installation package will include several software components: Flip, Java Runtime Environment, .Net framework 3.5 SP1, and Accessory Programming Software. You will be prompted to start installation and acknowledge End User License Agreements for individual components.

Follow the steps below to install the Accessory Programming Software:

1. Download the APS.zip file from the Motorola Solutions website for your product (specific product page can be located on <http://www.motorolasolutions.com>).
2. Extract APS.zip file to a local drive (most systems will perform that action automatically when you click on the file icon).
3. Open the folder and click on setup.exe.
4. Use all default options and click “Accept”, “Install”, “Next” as prompted. Accept all End User License Agreements to proceed.
5. Press Finish when complete as prompted by the following screen.



Device Driver Installation

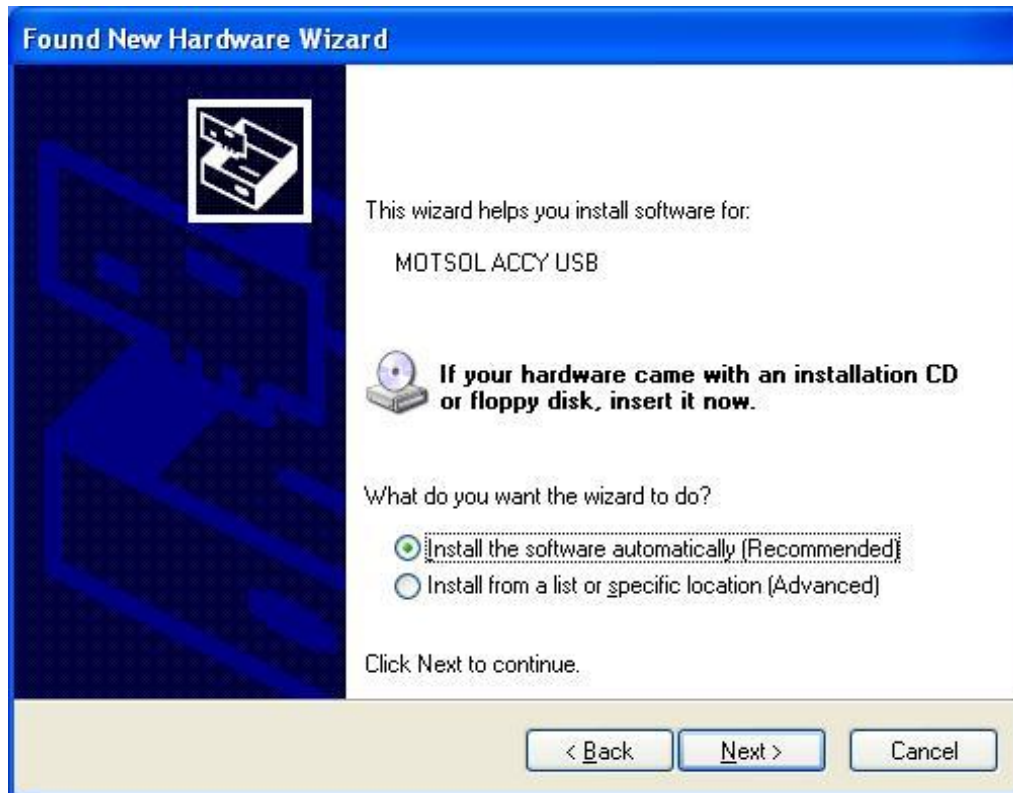
1. Connect the accessory to the computer using a programming cable. The programming cable for your particular accessory can be ordered from Motorola Solutions.



Note: The following drivers installation process will be required on Windows XP only. On Windows Vista and Windows 7, drivers are installed automatically and you will usually see system notification of successful driver installation. No further action would be needed in that case.

On Windows XP:

2. When accessory is connected to your computer for the first time after APS installation, driver installation window will automatically pop up. Select the automatic installation option and click Next.



3. Click Continue Anyway when prompted.



4. Click Finish to complete the installation

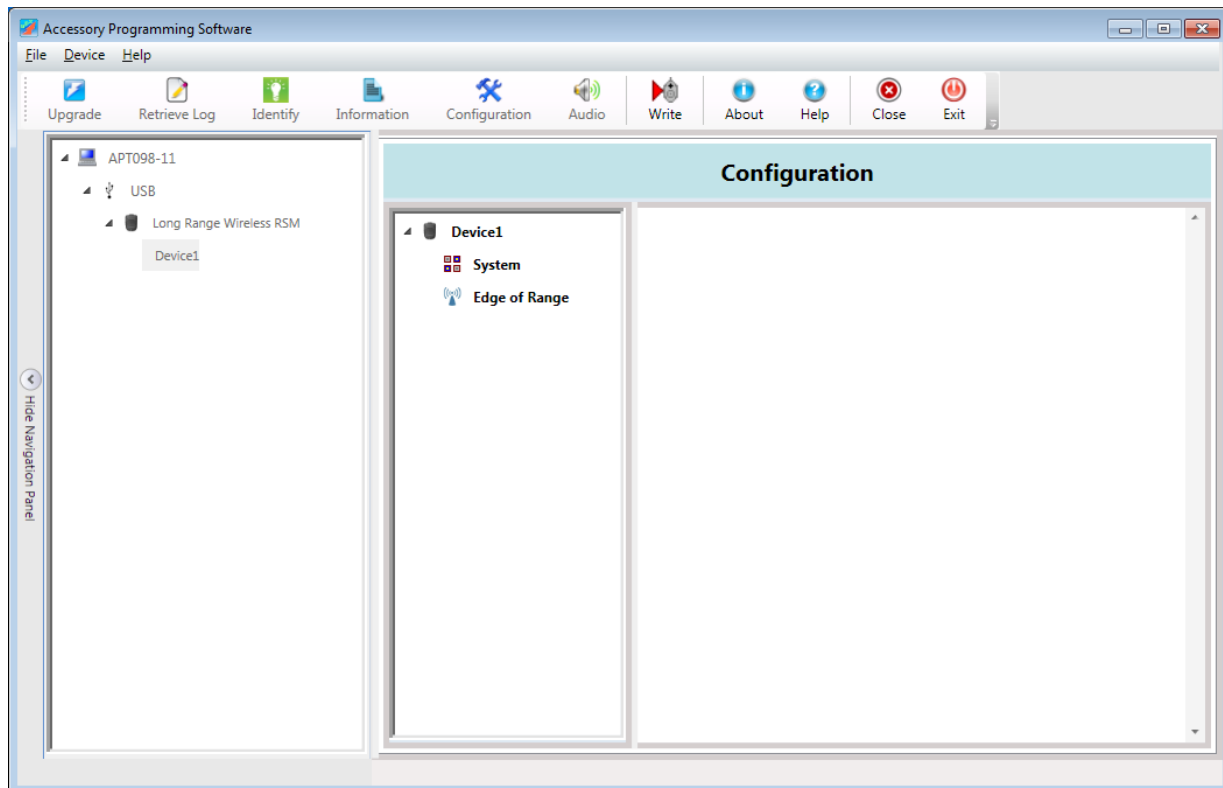


Your software installation is now complete.

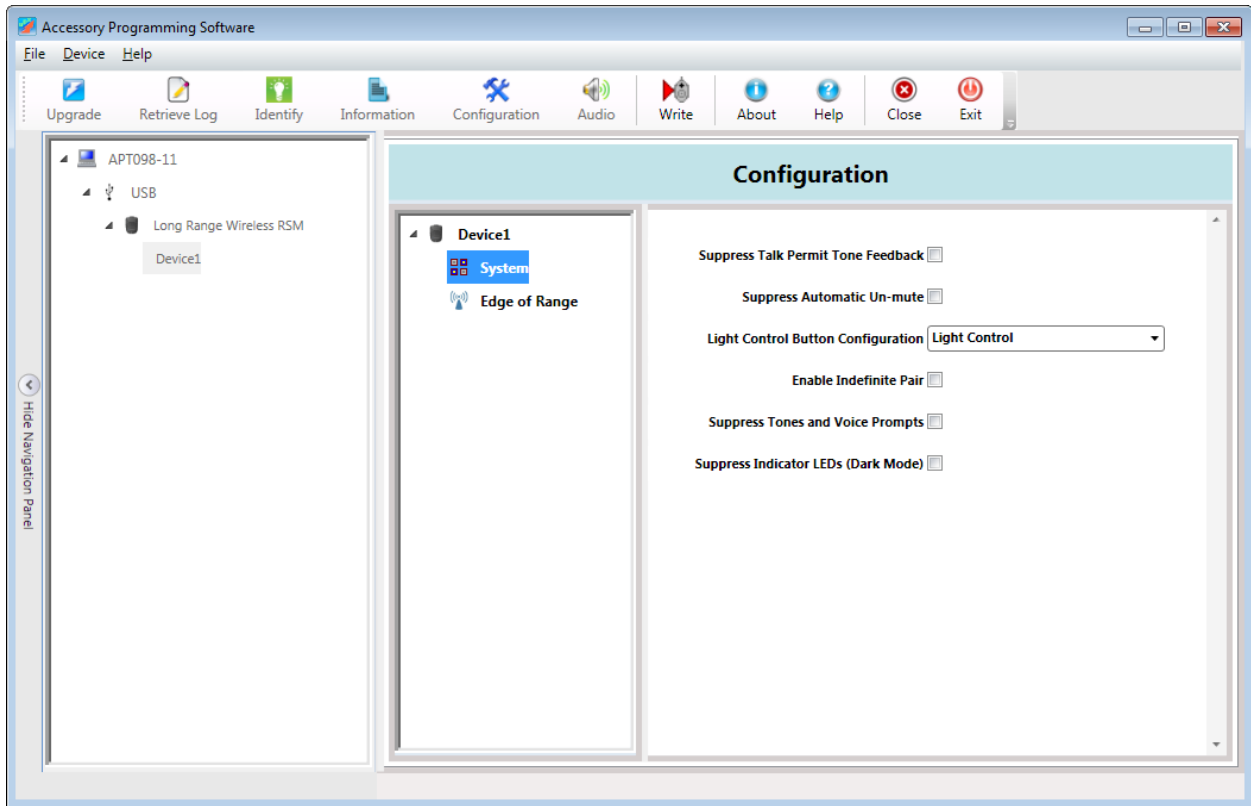
How to Configure Accessory

1. Launch APS from “Start->Programs->Motorola Solutions->Accessory Programming Software->APS”. Or use desktop shortcut.
2. Select a device out of the list displayed on the left panel and click on Configuration button.

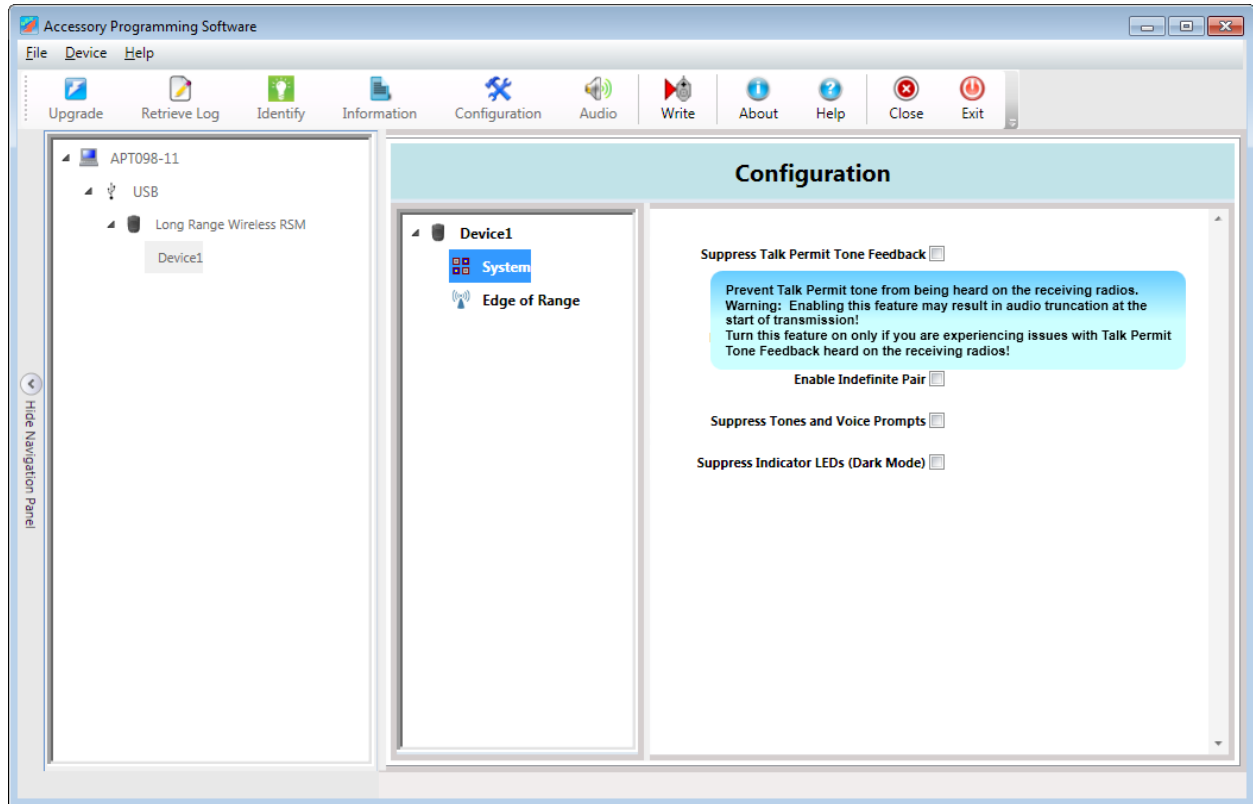
Note: You may have one or more devices connected at the same time. If no device is attached, none will be displayed. Once a device is selected, Configuration button will be enabled if the attached accessory supports Configuration feature.



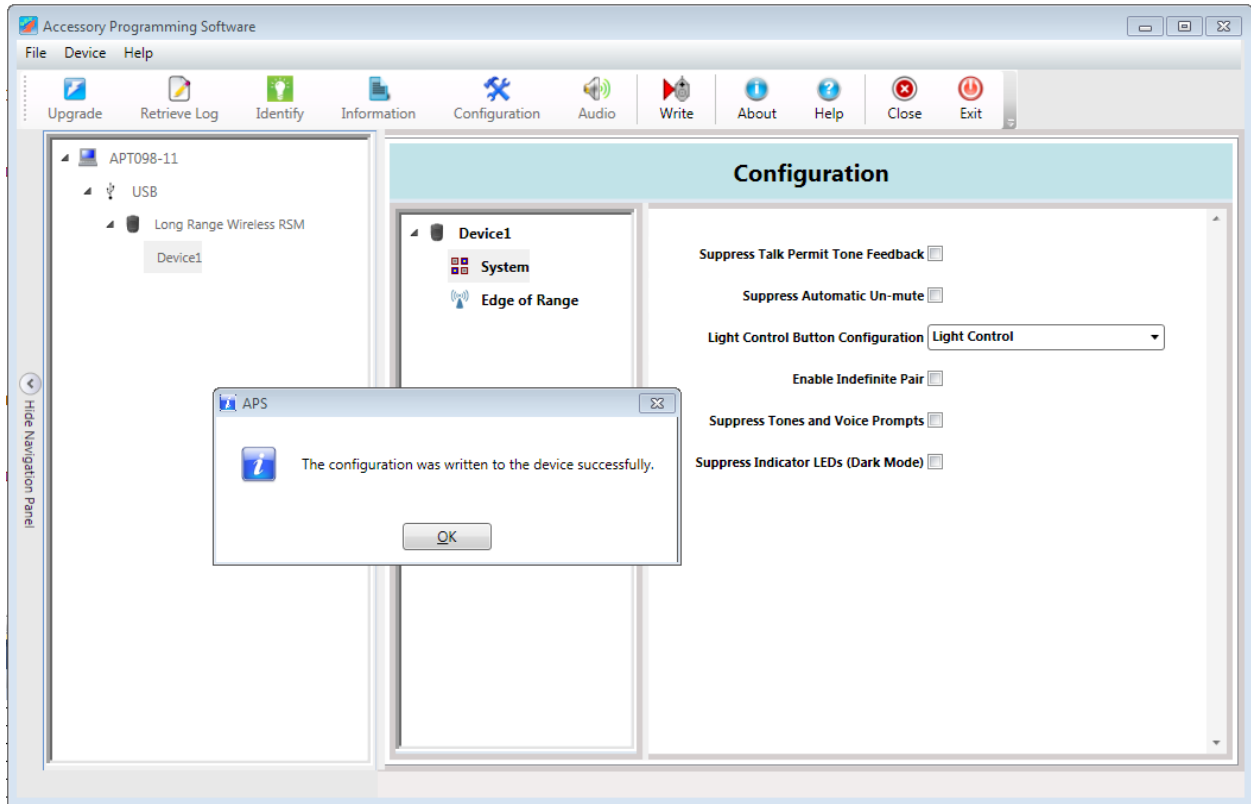
3. Select a component under selected device icon (left side of the Configuration panel, “System” in this example). At this point, you should see all the features that can be modified for that component.



4. For a description of each feature, simply put the mouse pointer on the name of that feature. A pop up dialog will be displayed below with a description for that particular feature.



5. Modify the settings and click the Write button on the Toolbar.



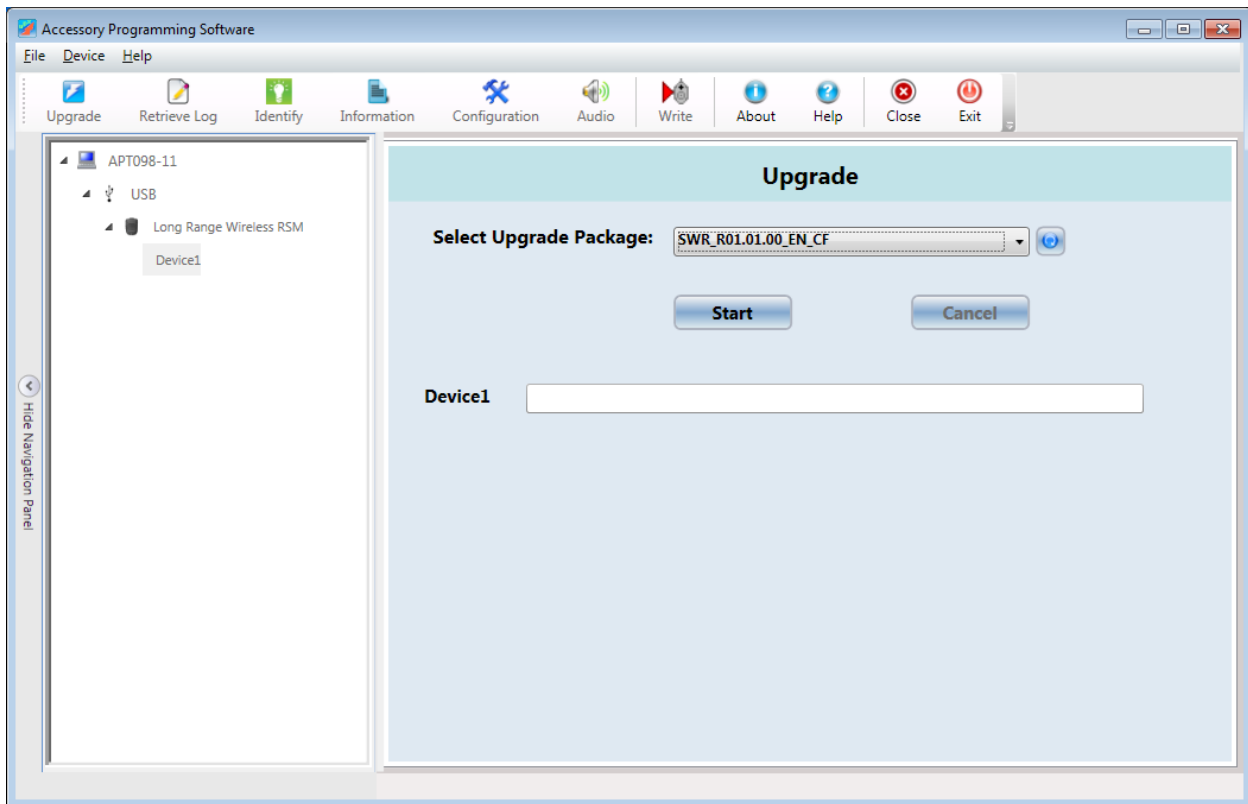
6. Click OK button on the dialog and then Close button on the Toolbar if you are done.

How to Upgrade Accessory Firmware

In order to upgrade your device you will be required to download and install appropriate firmware upgrade package from Motorola Solutions MOL website. Firmware package download requires user registration and familiarity with product firmware update history and compatibility. While the upgrade procedure is straight forward, it is best reserved for expert users, dealers or technical personnel in charge of your equipment maintenance.

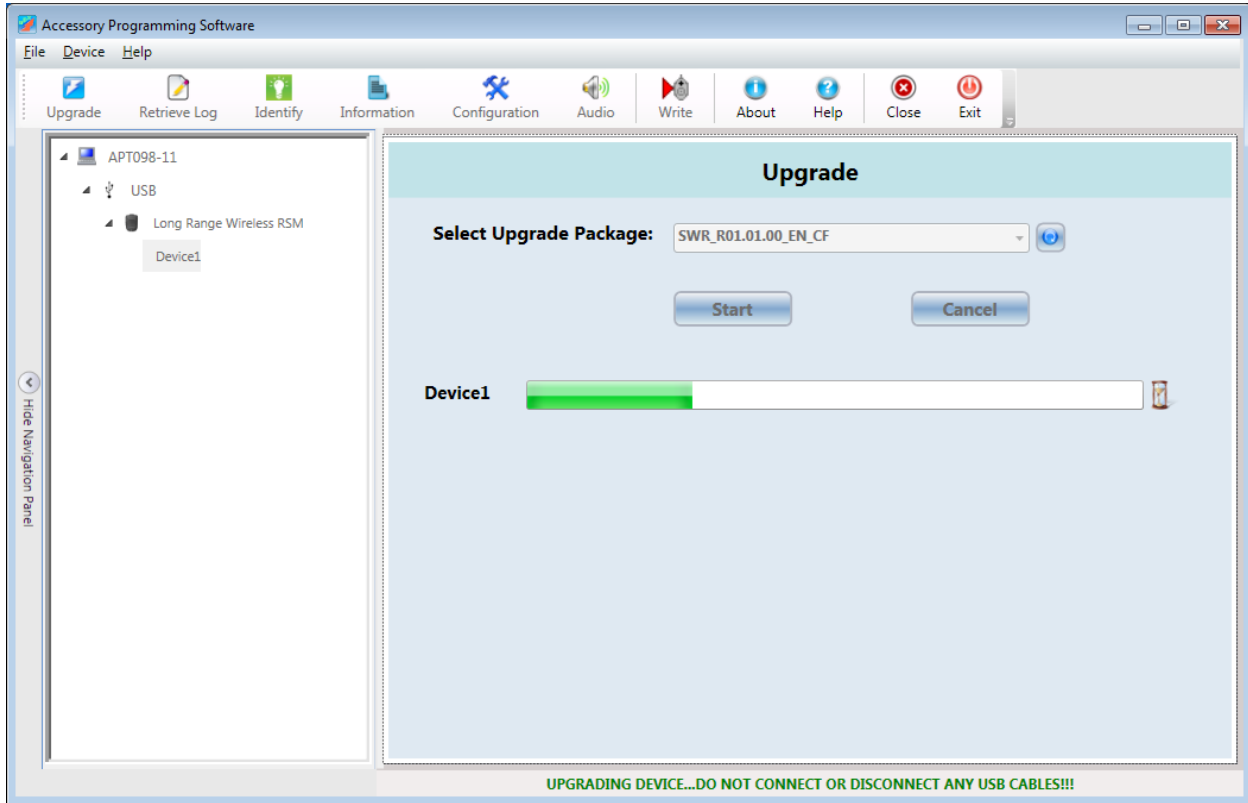
1. Launch APS from “Start->Programs->Motorola Solutions->Accessory Programming Software->APS”. There is also a shortcut on the desktop.
2. Select a device out of the list displayed on the left panel and click on Upgrade button on the toolbar.

Note: You may have one or more devices connected at the same time. If no device is attached, none will be displayed. Once a device is selected, Upgrade button will be enabled.



3. Select the desired upgrade package and click Start button.

Note: The upgrade package that was installed previously will be shown in the drop down list. If it is not shown, try to install the upgrade package again.



Note: The upgrade process may take up to several minutes and additional windows may pop up and close automatically during that time. Please do not disturb the upgrade process until it is complete.

4. Click Close when the device is successfully upgraded.

